



# Weekly Regional HOG PRICE Report

June 30, 2026

## Weekly Hog Prices

US cash hogs started the week strong on more than \$3/cwt rises Monday however fell daily throughout the balance of the week. National cash declined \$0.47/cwt from week-ago prices, while regional cash was unreported multiple days with the WCB up \$1.16/cwt and nothing to report out of the ISM. CME cash was also primarily lower, ending \$0.62/cwt under week-ago prices. Wholesale pork primal values were mostly lower however hams and ribs recorded good improvements, with pork cutout \$0.43 or -0.4% lower to \$95.16 US/cwt from the previous week's average.

USD	Weekly Averages						
	Cash Price	Head	26-Jun	Head	19-Jun	w/w	% Chg
ISM pm					\$97.71		
WCB pm		\$96.16			\$96.85	-\$0.69	-0.7%
Nat pm		\$95.86			\$96.73	-\$0.87	-0.9%
CME Index*		\$91.66			\$92.21	-\$0.55	-0.6%
Sows, 300-449lbs	10,835	\$53.27	12,229		\$55.41	-\$2.14	-3.9%
Sows, 500+ lbs	15,827	\$62.74	15,168		\$65.77	-\$3.03	-4.6%
BoC Exch		1.4197			1.4063	0.0134	1.0%

\* Represents Friday-Thursday average

Canadian market hogs were higher on modestly lower cash prices which benefited from the higher exchange rate. The Sig 4 was up more than \$2/hog followed by hogs out of Hylife which were up \$1.75/hog. Out of the east, Ontario and Quebec were each up on either side of \$1/hog while the OlyW 20 was up \$1/hog, the OlyW 21R2 edged \$0.10/hog higher and BP4/TC4 was down \$0.50/hog. In the US hog values declined, with Tyson down \$0.65/hog while JM fell \$1.45/hog from the previous week.

Regional Pricing, \$/hog								
Packer/Region	Avg 3 Year	Difference to OlyW21	YTD 2026	Difference to OlyW21	Avg Last 13 weeks	Difference to OlyW21	Ending 26-Jun-26	Difference to OlyW21
IPM (MMS 5.0)	\$247.89		\$249.27		\$251.41		\$251.25	
OlyW 2021 (R2)**	\$244.73		\$242.29		\$247.13		\$250.62	
OlyW 2020*	\$257.24	\$12.50	\$257.22	\$14.92	\$264.64	\$17.51	\$271.22	\$20.61
Sig 4	\$247.75	\$3.01	\$253.34	\$11.05	\$260.54	\$13.42	\$268.98	\$18.36
BP4/TCP4	\$240.91	-\$3.83	\$239.64	-\$2.65	\$247.20	\$0.07	\$254.11	\$3.49
Hylife	\$245.55	\$0.81	\$244.08	\$1.78	\$249.98	\$2.86	\$257.57	\$6.95
Ontario***	\$250.67	\$5.94	\$250.84	\$8.55	\$258.43	\$11.30	\$266.39	\$15.78
Québec (overall)	\$240.10	-\$4.64	\$239.19	-\$3.10	\$241.49	-\$5.64	\$242.17	-\$8.44
Tyson (USD)	\$188.65	-\$56.08	\$196.61	-\$45.68	\$206.92	-\$40.21	\$211.64	-\$38.97
John Morrell (USD)	\$180.61	-\$64.13	\$189.66	-\$52.63	\$198.51	-\$48.61	\$203.52	-\$47.10

\* 3 Year average uses actual OlyW'20 only for respective weeks. Starting Jan 2020 prices includes \$0.06 per kg proximity bonus

\*\* 13 week average and the latest week uses the OlyW'21 including the floor price

\*\*\* Ontario pricing does not include any pork or cutout based formulas for market hogs

Note: OlyW and BP4/TCP4 are nearly a full 1 week lag to Sig 4, Hylife, Ontario & Quebec

Note: BP4 covers the freight of shipment in addition to the price reported.

# Weekly Hog Margins

Monitored hog margins were mixed to mostly stronger on varied hog values and moves in feed costs. Canadian farrow-to-finish feed costs were up \$0.35/hog while those in the monitored US region declined \$0.45/hog from last reported.

Sig 4 hog margins strengthened \$1.75 to \$67.60/hog profits out of Brandon and \$55.45/hog profits out of Lethbridge. Ontario margins improved \$0.60 to \$61.10/hog profits followed by OlyW20 margins which were up \$0.65 to \$58.15/hog profits and Hylife which rose \$1.40 to \$56.20/hog profits. Quebec margins improved \$0.70 to \$37.85/hog profits while OlyW21R2 margins edged \$0.25 lower to \$37.55/hog profits. In the US, Tyson slipped \$0.25 lower to \$68.60/hog profits while JM margins fell \$1 to \$62.20/hog profits.

Regional MARGINS, \$/hog					
Packer/Region	26-Jun-26 Hog Price	Farrow to Finish Feed*	Fixed COP	Total COP	Weekly Margin
OlyW 20/Alberta	\$271.22	\$141.89	\$71.20	\$213.09	\$58.13
OlyW 21 (R2)/Alberta	\$250.62	\$141.89	\$71.20	\$213.09	\$37.53
Sig 4/Manitoba	\$268.98	\$130.69	\$70.70	\$201.39	\$67.59
Hylife/Manitoba	\$257.57	\$130.69	\$70.70	\$201.39	\$56.18
Ontario	\$266.39	\$131.62	\$73.68	\$205.30	\$61.09
Québec (overall)	\$242.17	\$134.19	\$70.15	\$204.34	\$37.83
Tyson (USD)/Iowa	\$211.64	\$88.86	\$54.17	\$143.03	\$68.61
	\$203.52	\$87.13	\$54.17	\$141.30	\$62.22

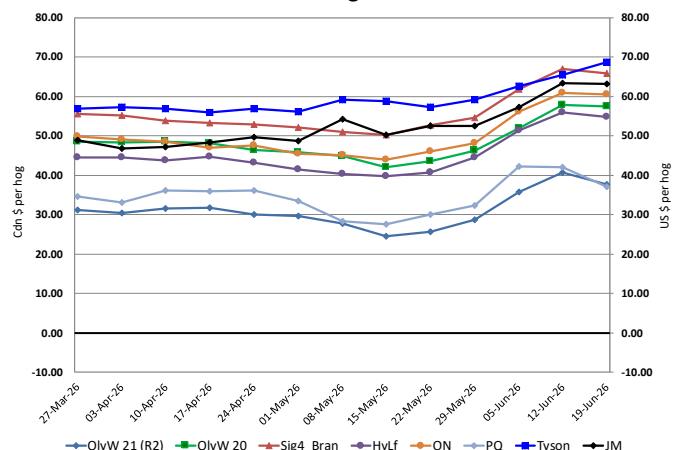
\* Feed cost variables- 285 lb hog, 1.57 F:G nursery, 2.89 F:G feeder-finish, \$20 GMD

\* Feed & Fixed COP expenses updated January 2024 onward

Calculated Weekly Can Farrow-Finish Feed Cost



Canadian & US Margins Last 13 weeks



# Monthly Hog & Feeder Pig Margins

Farrow-to-Finish Market & Range	Lean Hog Marketing USD Contract(s)	\$/ckg	\$/hog	Corn Price /MT	Soymeal Price /MT	Wheat Price /MT	Barley Price /MT	Feed COP	Fixed COP	Total	Margin
<b>July 2026</b>	<b>Jul/Aug, \$94.61</b>	<b>\$235.34</b>	<b>\$273.65</b>	<b>\$299.05</b>	<b>\$593.59</b>	<b>\$298.62</b>	<b>\$268.62</b>	<b>\$140.60</b>	<b>\$76.95</b>	<b>\$217.55</b>	<b>\$57.00</b>
OlyW 20		\$234.07	\$281.72								\$65.07
OlyW 21 R2		\$240.49	\$261.70								\$45.05
Sig4 Lethbridge		\$231.46	\$277.52								\$60.87
<b>August 2026</b>	<b>Aug/Oct, \$93.69</b>	<b>\$239.42</b>	<b>\$278.12</b>	<b>\$297.12</b>	<b>\$585.07</b>	<b>\$294.88</b>	<b>\$266.59</b>	<b>\$139.58</b>	<b>\$76.95</b>	<b>\$216.53</b>	<b>\$62.50</b>
OlyW 20		\$238.32	\$286.60								\$70.97
OlyW 21 R2		\$246.10	\$267.51								\$51.89
Sig4 Lethbridge		\$233.84	\$280.26								\$64.63
<b>September 2026</b>	<b>Aug/Oct, \$82.68</b>	<b>\$228.77</b>	<b>\$266.29</b>	<b>\$295.28</b>	<b>\$575.14</b>	<b>\$296.36</b>	<b>\$264.66</b>	<b>\$139.05</b>	<b>\$76.95</b>	<b>\$216.00</b>	<b>\$51.20</b>
OlyW 20		\$228.63	\$275.46								\$60.37
OlyW 21 R2		\$235.26	\$256.29								\$41.20
Sig4 Lethbridge		\$222.41	\$267.13								\$52.04
<b>October 2026</b>	<b>Oct/Dec, \$80.61</b>	<b>\$214.10</b>	<b>\$249.95</b>	<b>\$296.33</b>	<b>\$569.36</b>	<b>\$299.87</b>	<b>\$265.76</b>	<b>\$139.29</b>	<b>\$76.95</b>	<b>\$216.25</b>	<b>\$34.60</b>
OlyW 20		\$210.72	\$254.89								\$39.54
OlyW 21 R2		\$221.92	\$242.48								\$27.14
Sig4 Lethbridge		\$209.66	\$252.47								\$37.13
<b>November 2026</b>	<b>Oct/Dec, \$75.16</b>	<b>\$206.97</b>	<b>\$242.02</b>	<b>\$298.82</b>	<b>\$565.60</b>	<b>\$302.85</b>	<b>\$268.37</b>	<b>\$139.78</b>	<b>\$76.95</b>	<b>\$216.73</b>	<b>\$26.20</b>
OlyW 20		\$202.87	\$245.86								\$30.03
OlyW 21 R2		\$214.80	\$235.11								\$19.29
Sig4 Lethbridge		\$203.24	\$245.10								\$29.28
<b>December 2026</b>	<b>Dec/Feb, \$75.46</b>	<b>\$200.68</b>	<b>\$234.98</b>	<b>\$300.76</b>	<b>\$565.21</b>	<b>\$305.97</b>	<b>\$270.41</b>	<b>\$140.35</b>	<b>\$76.95</b>	<b>\$217.30</b>	<b>\$18.59</b>
OlyW 20		\$196.67	\$238.74								\$22.35
OlyW 21 R2		\$210.13	\$230.28								\$13.89
Sig4 Lethbridge		\$195.25	\$235.92								\$19.53

\$/ckg values converted to \$/hog utilizing the following variables: 103.5 kg dressed, Oly20@111.0/Oly21@100.0/Sig4@111.0 indices, Oly premiums \$12.75/hog & Sig4 premiums \$11.56/hog  
 Fixed COP includes: variable costs of \$41.45, fixed costs of \$23.53 & labour of \$11.97 for a total of \$76.95 in Non-Feed COP per hog, which does not include depreciation or interest  
 Feed COP represents a 6-month feeding period, calculated weekly.  
 Margin includes cull sow revenue.

Feed	Price per MT	Consumption	Cost
Sow Lactation Ration	\$ 404.90 /MT	6.18 kg/day	\$ 4.88 /hog
Sow Gestation Ration	\$ 347.55 /MT	2.76 kg/day	\$ 9.89 /hog
Boar Ration	\$ 350.00 /MT	0.00 kg/day	\$ 0.00 /hog
Creep Feed	\$ 1250.00 /MT	0.00 kg/day	\$ 0.00 /hog
N1	\$ 860.61 /MT	1.20 kg/hog	\$ 1.03 /hog
N2	\$ 571.08 /MT	5.00 kg/hog	\$ 2.86 /hog
N3	\$ 441.35 /MT	22.49 kg/hog	\$ 9.93 /hog
F1	\$ 404.95 /MT	78.43 kg/hog	\$ 31.76 /hog
F2	\$ 374.72 /MT	97.86 kg/hog	\$ 36.67 /hog
F3	\$ 361.22 /MT	120.74 kg/hog	\$ 43.61 /hog

Isowean & Feeder Pig Pricing & Margins			
Isowean Pricing & Margins (CDN\$)	26/Jun/26	13-Week Avg	3-Year Avg
Com Pro MMS 2.0	52.44	64.65	67.92
USDA Cash	69.14	97.33	72.33
USDA Formula	67.80	80.89	72.62
52% CME Futures	56.05	60.34	63.05
Com Pro MMS 2.0 ISO Margins	6.55	18.23	21.46
Feeder Pricing & Margins (CDN\$)	26/Jun/26	13-Week Avg	3-Year Avg
Com Pro MMS 2.0	90.75	106.30	101.62
USDA Cash	118.64	147.19	105.68
84% CME Futures	88.18	100.70	102.32
Com Pro MMS 2.0 Feeder Margins	31.66	50.86	33.38

For more details, please contact Alberta Pork or Commodity Professionals Inc directly.



Disclaimer: TrueAg Developments, Inc. presents this report as a snapshot of the market using current information available at the time of the report. These findings are for informational purposes only and should not be reproduced or transmitted by any means without permission. TrueAg Developments, Inc. does not guarantee and accepts no legal liability arising from or connected to, the accuracy, reliability, or completeness of any material contained in the publication.