



Weekly Regional HOG PRICE Report

June 9, 2026

Weekly Hog Prices

US cash hogs improved for much of the week however did record a couple declines mid-to-late week. National cash improved \$0.62/cwt compared to the previous Friday, while regional cash out of the WCB rose \$1.63/cwt Friday compared to the previous Thursday. CME cash recorded daily improvements, though mostly modest, to end \$1.20/cwt over week-ago prices. Most wholesale pork primal values were higher, excluding notable declines in butts and ribs both down near -3.5%, bringing pork cutout \$0.69 or +0.7% higher to \$99.63 US/cwt from the previous week's average.

USD	Weekly Averages						
	Cash Price	Head	5-Jun	Head	29-May	w/w	% Chg
ISM pm			\$95.15			\$95.15	
WCB pm			\$95.09		\$93.87	\$1.22	1.3%
Nat pm			\$94.66		\$93.84	\$0.82	0.9%
CME Index*			\$92.10		\$90.90	\$1.20	1.3%
Sows, 300-449lbs	10,036	\$61.22		8,778	\$62.74	-\$1.52	-2.4%
Sows, 500+ lbs	14,148	\$70.73		10,913	\$72.33	-\$1.60	-2.2%
BoC Exch			1.3875		1.3811	0.0064	0.5%

* Represents Friday-Thursday average

Canadian market hogs generally improved \$3-\$6 per hog from last reported. Quebec hogs surged \$6.75/hog and those out of Ontario rose \$4.75/hog. The Sig 4 was up \$4/hog, followed by the OlyW21R2 which improved \$3.90/hog and Hylife which was up \$3.75/hog. The OlyW20 rose \$2.55/hog while BP4/TCP4 climbed \$0.85 higher. In the US, Tyson climbed \$1.15/hog higher while JM improved \$2.55/hog from the previous week.

Regional Pricing, \$/hog								
Packer/Region	Avg 3 Year	Difference to OlyW21	YTD 2026	Difference to OlyW21	Avg Last 13 weeks	Difference to OlyW21	Ending 05-Jun-26	Difference to OlyW21
IPM (MMS 5.0)	\$247.64		\$249.08		\$251.71		\$257.03	
OlyW 2021 (R2)**	\$244.28		\$241.11		\$246.02		\$249.51	
OlyW 2020*	\$256.74	\$12.46	\$255.49	\$14.37	\$262.89	\$16.87	\$265.66	\$16.15
Sig 4	\$247.20	\$2.92	\$251.47	\$10.35	\$258.44	\$12.42	\$263.90	\$14.39
BP4/TCP4	\$240.42	-\$3.86	\$237.86	-\$3.25	\$245.05	-\$0.98	\$247.22	-\$2.30
Hylife	\$245.18	\$0.90	\$242.45	\$1.33	\$248.04	\$2.02	\$253.46	\$3.95
Ontario***	\$250.25	\$5.98	\$248.90	\$7.78	\$256.44	\$10.42	\$262.15	\$12.63
Québec (overall)	\$239.55	-\$4.73	\$238.70	-\$2.41	\$241.66	-\$4.37	\$247.32	-\$2.19
Tyson (USD)	\$188.46	-\$55.82	\$194.73	-\$46.38	\$205.21	-\$40.81	\$208.48	-\$41.03
John Morrell (USD)	\$180.51	-\$63.77	\$187.71	-\$53.40	\$196.40	-\$49.63	\$201.29	-\$48.22

* 3 Year average uses actual OlyW'20 only for respective weeks. Starting Jan 2020 prices includes \$0.06 per kg proximity bonus

** 13 week average and the latest week uses the OlyW'21 including the floor price

*** Ontario pricing does not include any pork or cutout based formulas for market hogs

Note: OlyW and BP4/TCP4 are nearly a full 1 week lag to Sig 4, Hylife, Ontario & Quebec

Note: BP4 covers the freight of shipment in addition to the price reported.

Weekly Hog Margins

Monitored hog margins strengthened on improved hog values and a significant decline in feed costs. Canadian farrow-to-finish feed costs dropped \$3.20/hog while those in the monitored US region were down \$2.25/hog from last reported.

Sig 4 hog margins strengthened \$7.20 to \$61.85/hog profits out of Brandon and \$49.70/hog profits out of Lethbridge. Ontario margins rose \$8 to \$56.20/hog profits followed by OlyW20 margins which were up \$5.75 to shy of \$52/hog profits and Hylife which strengthened \$7 to \$51.45/hog profits. Quebec margins strengthened \$10 to \$42.35/hog profits while OlyW21R2 margins were up \$7.10 to \$35.75/hog profits. In the US hog margins also improved, with Tyson up \$3.40 to \$62.75/hog profits while JM margins strengthened \$4.80 to \$57.25/hog profits.

Regional MARGINS, \$/hog					
Packer/Region	05-Jun-26 Hog Price	Farrow to Finish Feed*	Fixed COP	Total COP	Weekly Margin
OlyW 20/Alberta	\$265.66	\$142.54	\$71.20	\$213.74	\$51.92
OlyW 21 (R2)/Alberta	\$249.51	\$142.54	\$71.20	\$213.74	\$35.77
Sig 4/Manitoba	\$263.90	\$131.34	\$70.70	\$202.04	\$61.86
Hylife/Manitoba	\$253.46	\$131.34	\$70.70	\$202.04	\$51.42
Ontario	\$262.15	\$132.27	\$73.68	\$205.95	\$56.20
Québec (overall)	\$247.32	\$134.84	\$70.15	\$204.99	\$42.33
Tyson (USD)/Iowa	\$208.48	\$91.57	\$54.17	\$145.74	\$62.74
	\$201.29	\$89.84	\$54.17	\$144.01	\$57.28

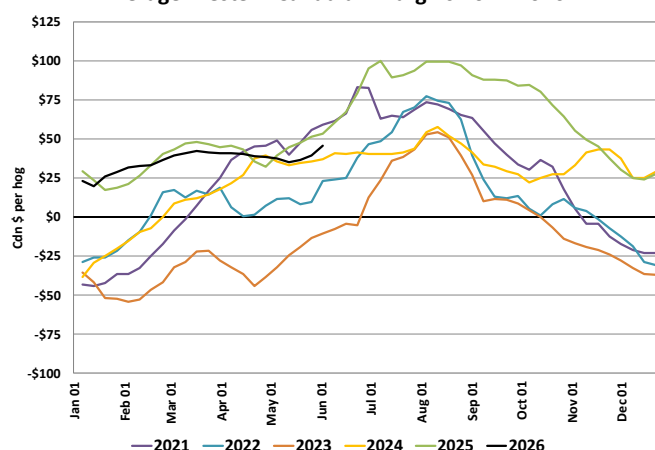
* Feed cost variables- 285 lb hog, 1.57 F:G nursery, 2.89 F:G feeder-finish, \$20 GMD

* Feed & Fixed COP expenses updated January 2024 onward

Calculated Weekly Can Farrow-Finish Feed Cost



Average Western Canadian Margins 2021-2026



Monthly Hog & Feeder Pig Margins

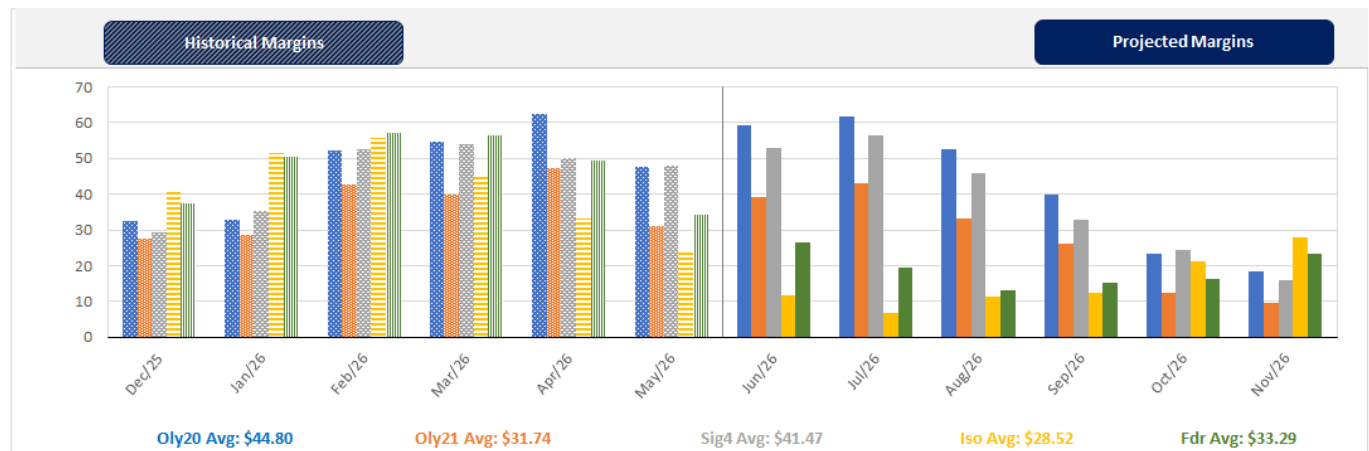
Farrow-to-Finish Market & Range	Lean Hog Marketing USD Contract(s)	\$/c/kg	\$/hog	Corn Price /MT	Soymeal Price /MT	Wheat Price /MT	Barley Price /MT	Feed COP	Fixed COP	Total	Margin
July 2026	Jul/Aug, \$95.77	\$232.51	\$270.50	\$299.18	\$583.77	\$319.63	\$268.75	\$142.44	\$76.97	\$219.41	\$52.00
OlyW 20		\$231.73	\$279.03								\$60.53
OlyW 21 R2		\$237.75	\$258.87								\$40.37
Sig4 Lethbridge		\$228.05	\$273.60								\$55.10
August 2026	Aug/Oct, \$92.14	\$231.09	\$268.88	\$295.86	\$571.29	\$313.78	\$265.27	\$140.89	\$76.97	\$217.86	\$51.93
OlyW 20		\$230.02	\$277.07								\$60.11
OlyW 21 R2		\$237.51	\$258.62								\$41.67
Sig4 Lethbridge		\$225.74	\$270.95								\$54.00
September 2026	Aug/Oct, \$81.69	\$222.04	\$258.83	\$294.30	\$561.95	\$314.87	\$263.63	\$140.43	\$76.97	\$217.39	\$42.35
OlyW 20		\$221.92	\$267.75								\$51.27
OlyW 21 R2		\$228.33	\$249.12								\$32.63
Sig4 Lethbridge		\$215.89	\$259.63								\$43.15
October 2026	Oct/Dec, \$79.78	\$208.08	\$243.26	\$295.23	\$557.60	\$317.37	\$264.61	\$140.66	\$76.97	\$217.62	\$26.55
OlyW 20		\$204.77	\$248.04								\$31.33
OlyW 21 R2		\$215.68	\$236.02								\$19.30
Sig4 Lethbridge		\$203.78	\$245.72								\$29.01
November 2026	Oct/Dec, \$74.82	\$202.32	\$236.87	\$297.46	\$556.35	\$320.14	\$266.95	\$141.22	\$76.97	\$218.19	\$19.58
OlyW 20		\$198.30	\$240.61								\$23.33
OlyW 21 R2		\$209.97	\$230.12								\$12.83
Sig4 Lethbridge		\$198.69	\$239.87								\$22.59
December 2026	Dec/Feb, \$75.12	\$196.15	\$229.95	\$299.17	\$557.61	\$322.56	\$268.74	\$141.78	\$76.97	\$218.75	\$12.11
OlyW 20		\$192.22	\$233.62								\$15.78
OlyW 21 R2		\$205.39	\$225.37								\$7.53
Sig4 Lethbridge		\$190.85	\$230.86								\$13.02

\$/c/kg values converted to \$/hog utilizing the following variables: 103.5 kg dressed, Oly20@111.0/Oly21@100.0/Sig4@111.0 indices, Oly premiums \$12.75/hog & Sig4 premiums \$11.56/hog
 Fixed COP includes: variable costs of \$41.45, fixed costs of \$23.59 & labour of \$11.97 for a total of \$76.97 in Non-Feed COP per hog, which does not include depreciation or interest
 Feed COP represents a 6-month feeding period, calculated weekly.
 Margin includes cull sow revenue.

Feed	Price per MT	Consumption	Cost
Sow Lactation Ration	\$ 404.90 /MT	6.18 kg/day	\$ 4.88 /hog
Sow Gestation Ration	\$ 347.55 /MT	2.76 kg/day	\$ 9.89 /hog
Boar Ration	\$ 350.00 /MT	0.00 kg/day	\$ 0.00 /hog
Creep Feed	\$ 1250.00 /MT	0.00 kg/day	\$ 0.00 /hog
N1	\$ 855.68 /MT	1.20 kg/hog	\$ 1.03 /hog
N2	\$ 568.62 /MT	5.00 kg/hog	\$ 2.84 /hog
N3	\$ 443.39 /MT	22.49 kg/hog	\$ 9.97 /hog
F1	\$ 407.96 /MT	78.43 kg/hog	\$ 32.00 /hog
F2	\$ 377.22 /MT	97.86 kg/hog	\$ 36.91 /hog
F3	\$ 363.67 /MT	120.74 kg/hog	\$ 43.91 /hog

Isowean & Feeder Pig Pricing & Margins				
Isowean Pricing & Margins (CDN\$)		5/Jun/26	13-Week Avg	3-Year Avg
Com Pro MMS 2.0		57.47	70.32	67.71
USDA Cash		91.48	107.66	71.19
USDA Formula		69.14	86.28	72.04
52% CME Futures		56.91	62.69	62.99
Com Pro MMS 2.0 ISO Margins		10.83	23.89	21.19
Feeder Pricing & Margins (CDN\$)		5/Jun/26	13-Week Avg	3-Year Avg
Com Pro MMS 2.0		98.74	116.11	101.16
USDA Cash		134.25	158.65	104.23
84% CME Futures		94.74	108.72	102.25
Com Pro MMS 2.0 Feeder Margins		41.06	61.27	32.43

For more details, please contact Alberta Pork or Commodity Professionals Inc directly.



Disclaimer: TrueAg Developments, Inc. presents this report as a snapshot of the market using current information available at the time of the report. These findings are for informational purposes only and should not be reproduced or transmitted by any means without permission. TrueAg Developments, Inc. does not guarantee and accepts no legal liability arising from or connected to, the accuracy, reliability, or completeness of any material contained in the publication.