



Weekly Regional HOG PRICE Report

February 10, 2026

Weekly Hog Prices

US cash hogs varied during the week however finished above the week previous owing to significant improvements mid-week. National cash ended \$1.82/cwt over last Friday, while the WCB was \$0.79/cwt higher compared to the previous Friday however the ISM was unreported the back-half of the week and was \$2.03 higher Wednesday compared to the previous Friday. CME cash improved near daily though generally modestly, up \$0.79/cwt from week-ago prices. Wholesale pork values were mixed, especially ribs which fell -3.7%, weighing US pork cutout -0.1% or \$0.11 lower to \$95.02 US/cwt from the previous week's average.

USD	Weekly Averages					
	Cash Price	Head	6-Feb	Head	30-Jan	w/w % Chg
ISM pm			\$86.81		\$85.49	\$1.32 1.5%
WCB pm			\$86.66		\$85.50	\$1.16 1.4%
Nat pm			\$85.48		\$84.46	\$1.02 1.2%
CME Index*			\$86.11		\$85.03	\$1.08 1.3%
Sows, 300-449lbs	12,232	\$60.26	12,474	\$56.34	\$3.92	7.0%
Sows, 500+ lbs	11,085	\$69.23	10,845	\$65.72	\$3.51	5.3%
BoC Exch		1.3664		1.3594	0.0070	0.5%

* Represents Friday-Thursday average

Canadian market hog values were generally up a much as \$4/hog on the week, excluding those out of Quebec which fell \$3.70/hog. Ontario hogs were up the most rising \$4/hog followed by the lag-based BP4/TC4 which was up \$3.35/hog, and the Sig 4 which improved \$3.20/hog. The OlyW20 was up \$2/hog, while Hylife improved \$1.35/hog and the OlyW21R2 climbed \$0.50/hog higher. In the US hog values also improved significantly, with Tyson rising shy of \$5/hog while JM was up \$2.40/hog from the previous week.

Regional Pricing, \$/hog								
Packer/Region	Avg 3 Year	Difference to OlyW21	YTD 2026	Difference to OlyW21	Avg Last 13 weeks	Difference to OlyW21	Ending 06-Feb-26	Difference to OlyW21
IPM (MMS 5.0)	\$244.41		\$244.34		\$247.24		\$244.00	
OlyW 2021 (R2)**	\$240.58		\$232.49		\$236.53		\$233.99	
OlyW 2020*	\$252.13	\$11.55	\$241.28	\$8.79	\$246.06	\$9.52	\$246.43	\$12.44
Sig 4	\$242.23	\$1.65	\$231.90	-\$0.59	\$235.08	-\$1.46	\$238.00	\$4.01
BP4/TCP4	\$237.16	-\$3.42	\$224.84	-\$7.65	\$230.01	-\$6.52	\$228.33	-\$5.66
Hylife	\$241.89	\$1.31	\$232.33	-\$0.15	\$236.66	\$0.12	\$235.33	\$1.34
Ontario***	\$245.76	\$5.18	\$233.80	\$1.32	\$236.86	\$0.33	\$241.35	\$7.36
Québec (overall)	\$235.35	-\$5.23	\$233.79	\$1.30	\$237.63	\$1.10	\$231.71	-\$2.28
Tyson (USD)	\$184.92	-\$55.66	\$170.42	-\$62.07	\$166.79	-\$69.75	\$189.76	-\$44.23
John Morrell (USD)	\$177.40	-\$63.18	\$167.31	-\$65.18	\$159.90	-\$76.63	\$183.75	-\$50.24

* 3 Year average uses actual OlyW'20 only for respective weeks. Starting Jan 2020 prices includes \$0.06 per kg proximity bonus

** 13 week average and the latest week uses the OlyW'21 including the floor price

*** Ontario pricing does not include any pork or cutout based formulas for market hogs

Note: OlyW and BP4/TCP4 are nearly a full 1 week lag to Sig 4, Hylife, Ontario & Quebec

Note: BP4 covers the freight of shipment in addition to the price reported.

Weekly Hog Margins

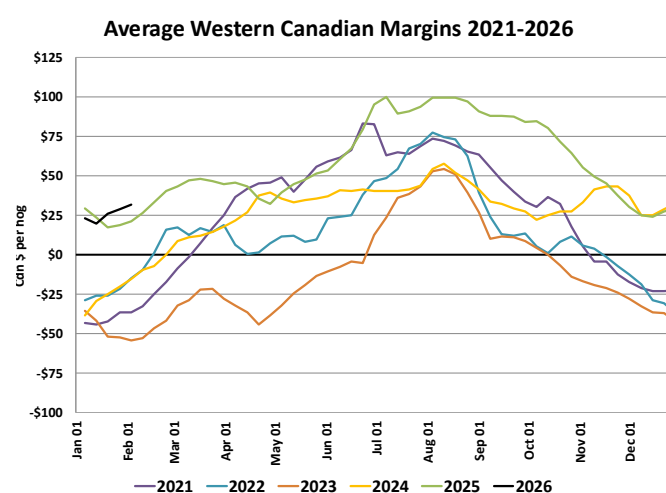
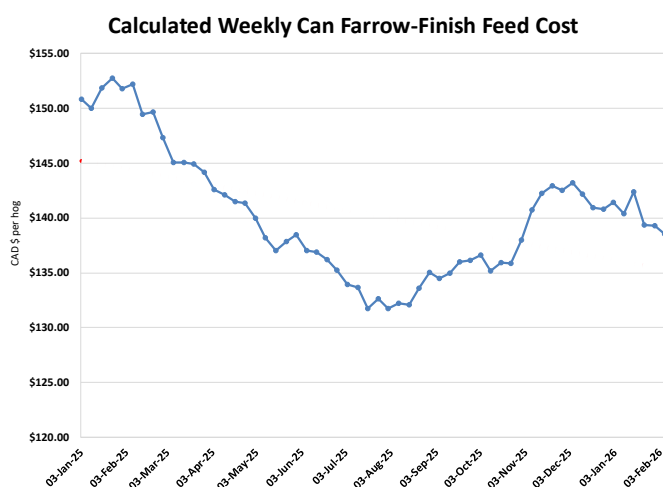
Monitored hog margins primarily improved on rising hog values, with Canadian margins further supported by a decline in feed costs. Canadian farrow-to-finish feed costs fell \$0.75/hog on the week while those out of the monitored US region climbed \$0.15/hog from the previous week.

Sig 4 hog margins rose \$4 to \$40/hog profits out of Brandon and \$33.75/hog profits out of Lethbridge, followed by Ontario margins which strengthened \$4.70 to \$38.40/hog profits. Hylife hog margins were up \$2.10 to \$37.25/hog profits and OlyW20 margins improved \$2.75 to \$36.65/hog profits, while Quebec margins weakened \$3 to \$30.70/hog profits and OlyW21R2 margins were up \$1.25 to \$24.25/hog profits. In the US, Tyson margins strengthened \$4.75 to \$46.65/hog profits while JM margins were up \$2.25 to \$42.35/hog profits from the week previous.

Regional MARGINS, \$/hog					
Packer/Region	06-Feb-26 Hog Price	Farrow to Finish Feed* Fixed COP		Total COP	Weekly Margin
OlyW 20/Alberta	\$246.43	\$138.56	\$71.20	\$209.76	\$36.67
OlyW 21 (R2)/Alberta	\$233.99	\$138.56	\$71.20	\$209.76	\$24.23
Sig 4/Manitoba	\$238.00	\$127.36	\$70.70	\$198.06	\$39.94
Hylife/Manitoba	\$235.33	\$127.36	\$70.70	\$198.06	\$37.27
Ontario	\$241.35	\$128.29	\$73.68	\$201.97	\$39.38
Québec (overall)	\$231.71	\$130.86	\$70.15	\$201.01	\$30.70
Tyson (USD)/Iowa	\$189.76	\$88.95	\$54.17	\$143.12	\$46.64
John Morrell (USD)/ND	\$183.75	\$87.22	\$54.17	\$141.39	\$42.36

* Feed cost variables- 285 lb hog, 1.57 F:G nursery, 2.89 F:G feeder-finish, \$20 GMD

* Feed & Fixed COP expenses updated January 2024 onward



Monthly Hog & Feeder Pig Margins

Farrow-to-Finish Market & Range	Lean Hog Marketing USD Contract(s)	\$/c/kg	\$/hog	Corn Price /MT	Soymeal Price /MT	Wheat Price /MT	Barley Price /MT	Feed COP	Fixed COP	Total	Margin
March 2026	Apr, \$96.25	\$239.57	\$278.23	\$288.02	\$535.62	\$271.82	\$257.03	\$133.27	\$76.90	\$210.17	\$68.97
OlyW 20		\$238.97	\$287.35								\$78.08
OlyW 21 R2		\$247.81	\$269.28								\$60.02
Sig4 Lethbridge		\$231.93	\$278.07								\$68.80
April 2026	Apr/Jun, \$97.91	\$243.70	\$282.81	\$289.42	\$536.78	\$272.34	\$258.50	\$133.56	\$76.90	\$210.46	\$73.25
OlyW 20		\$243.09	\$292.08								\$82.52
OlyW 21 R2		\$252.08	\$273.70								\$64.14
Sig4 Lethbridge		\$235.93	\$282.66								\$73.10
May 2026	Apr/Jun, \$108.44	\$269.92	\$311.91	\$290.96	\$539.80	\$273.69	\$260.12	\$134.04	\$76.90	\$210.94	\$101.88
OlyW 20		\$269.25	\$322.13								\$112.10
OlyW 21 R2		\$279.20	\$301.78								\$91.74
Sig4 Lethbridge		\$261.31	\$311.83								\$101.79
June 2026	Jun/Jul, \$110.09	\$274.03	\$316.47	\$293.09	\$543.07	\$275.88	\$262.36	\$134.70	\$76.90	\$211.60	\$105.78
OlyW 20		\$273.34	\$326.84								\$116.15
OlyW 21 R2		\$283.45	\$306.18								\$95.49
Sig4 Lethbridge		\$265.29	\$316.40								\$105.71
July 2026	Jul/Aug, \$111.05	\$276.41	\$319.11	\$295.07	\$546.46	\$278.27	\$264.44	\$135.36	\$76.90	\$212.26	\$107.76
OlyW 20		\$275.72	\$329.57								\$118.22
OlyW 21 R2		\$285.91	\$308.72								\$97.37
Sig4 Lethbridge		\$267.59	\$319.04								\$107.69
August 2026	Aug/Oct, \$106.88	\$266.02	\$307.59	\$296.56	\$549.63	\$282.38	\$266.01	\$136.12	\$76.90	\$213.02	\$95.47
OlyW 20		\$265.36	\$317.67								\$105.55
OlyW 21 R2		\$275.17	\$297.61								\$85.49
Sig4 Lethbridge		\$257.54	\$307.49								\$95.38

\$/c/kg values converted to \$/hog utilizing the following variables: 103.5 kg dressed, Oly20@111.0/Oly21@100.00/Sig4@111.0 indices, Oly premiums \$12.75/hog & Sig4 premiums \$11.56/hog

Fixed COP includes: variable costs of \$41.45, fixed costs of \$23.48 & labour of \$11.97 for a total of \$76.90 in Non-Feed COP per hog, which does not include depreciation or interest

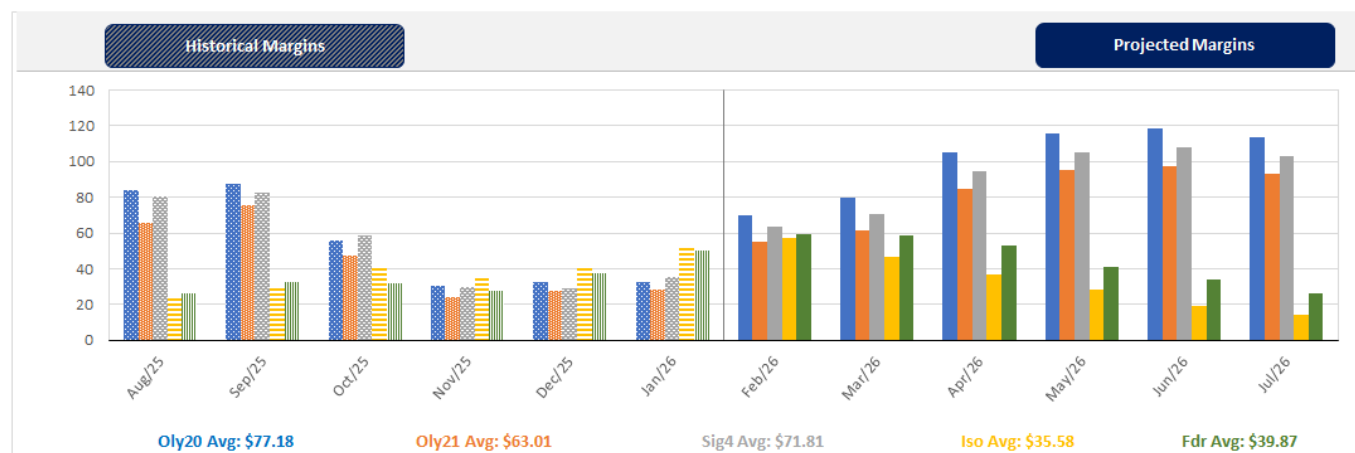
Feed COP represents a 6-month feeding period, calculated weekly.

Margin includes cull sow revenue.

Feed	Price per MT	Consumption	Cost
Sow Lactation Ration	\$ 404.90 /MT	6.18 kg/day	\$ 4.88 /hog
Sow Gestation Ration	\$ 347.55 /MT	2.76 kg/day	\$ 9.89 /hog
Boar Ration	\$ 350.00 /MT	0.00 kg/day	\$ 0.00 /hog
Creep Feed	\$ 1250.00 /MT	0.00 kg/day	\$ 0.00 /hog
N1	\$ 847.10 /MT	1.20 kg/hog	\$ 1.02 /hog
N2	\$ 552.49 /MT	5.00 kg/hog	\$ 2.76 /hog
N3	\$ 424.17 /MT	22.49 kg/hog	\$ 9.54 /hog
F1	\$ 389.77 /MT	78.43 kg/hog	\$ 30.57 /hog
F2	\$ 360.29 /MT	97.86 kg/hog	\$ 35.26 /hog
F3	\$ 348.39 /MT	120.74 kg/hog	\$ 42.06 /hog

Isolean & Feeder Pig Pricing & Margins			
Isolean Pricing & Margins (CDN\$)		6/Feb/26	13-Week Avg
Com Pro MMS 2.0		95.45	86.07
USDA Cash		147.57	109.93
USDA Formula		104.50	90.99
52% CME Futures		76.91	72.80
Com Pro MMS 2.0 ISO Margins		49.96	40.20
Feeder Pricing & Margins (CDN\$)		6/Feb/26	13-Week Avg
Com Pro MMS 2.0		135.56	117.49
USDA Cash		168.26	134.85
84% CME Futures		127.60	116.08
Com Pro MMS 2.0 Feeder Margins		78.97	55.23

For more details, please contact Alberta Pork or Commodity Professionals Inc directly.



Disclaimer: TrueAg Developments, Inc. presents this report as a snapshot of the market using current information available at the time of the report. These findings are for informational purposes only and should not be reproduced or transmitted by any means without permission. TrueAg Developments, Inc. does not guarantee and accepts no legal liability arising from or connected to, the accuracy, reliability, or completeness of any material contained in the publication.