

# Hog Supply at a Glance

For the Week Ending 2025-12-20

## Canadian Slaughter

### Hog Slaughter at Federally Inspected Packing Plants

Head	Current Week			Year to Date		
	2025-12-20	2024-12-21	% Chg	2025-12-20	2024-12-21	% Chg
West	176,884	193,848	-8.8%	9,231,957	8,996,680	2.6%
East	226,540	222,573	1.8%	11,449,580	11,152,572	2.7%
Canada	403,424	416,421	-3.1%	20,681,537	20,149,252	2.6%
Carcass Weight (kg)	110.73	110.31	0.4%	110.34	110.01	0.3%
Pork Production (Tonnes)	44,670	45,935	-2.8%	2,282,098	2,216,591	3.0%

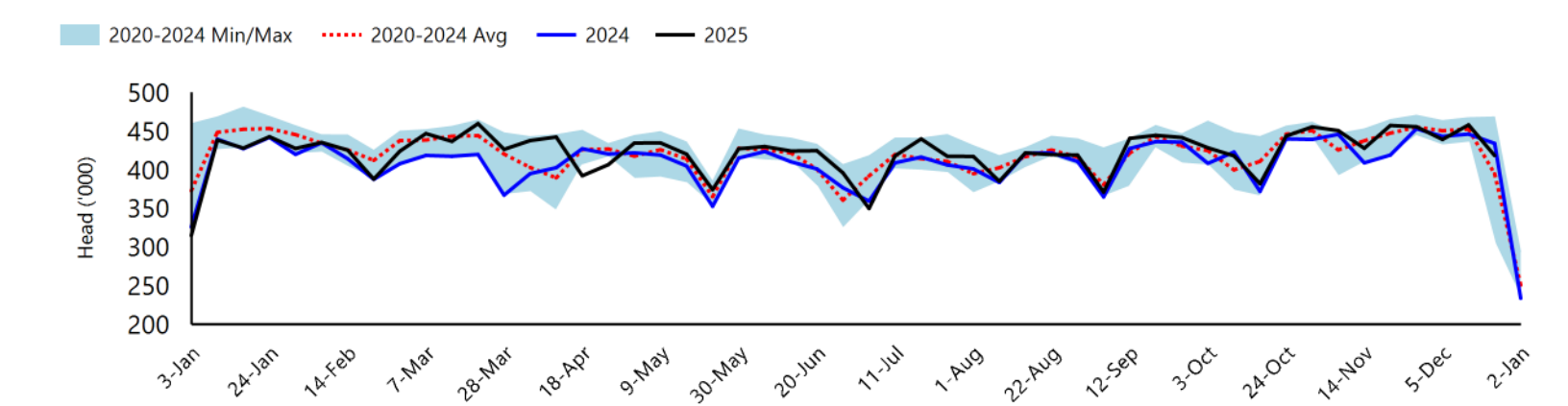
### Hog Slaughter by Province of Origin (Federal and Provincial Slaughter)

Head	Current Week			Year to Date		
	2025-12-20	2024-12-21	% Chg	2025-12-20	2024-12-21	% Chg
British Columbia	2,808	4,601	-39.0%	150,212	159,488	-5.8%
Alberta	43,738	35,641	22.7%	1,974,492	1,968,162	0.3%
Saskatchewan	34,371	38,548	-10.8%	1,677,944	1,692,130	-0.8%
Manitoba	97,522	119,235	-18.2%	5,515,387	5,359,607	2.9%
Ontario	101,489	101,409	0.1%	5,534,072	5,340,092	3.6%
Quebec	137,208	133,735	2.6%	6,669,357	6,435,750	3.6%
New Brunswick	105	6		12,723	18,909	-32.7%
Prince Edward Island	976	784	24.5%	23,889	45,859	-47.9%
Nova Scotia	283	309	-8.4%	10,229	8,242	24.1%
Canada	418,500	434,268	-3.6%	21,568,305	21,028,239	2.6%

### Estimated Sow/Boar Slaughter (Includes Federal & Provincial Slaughter)

Head	Current Week			Year to Date		
	2025-12-20	2024-12-21	Chg %	2025-12-20	2024-12-21	Chg %
East	720	687	4.8%	36,185	40,815	-11.3%
West	2,611	3,639	-28.2%	152,961	140,131	9.2%
Canada	3,331	4,326	-23.0%	189,146	180,946	4.5%

## Total Canadian Hog Slaughter



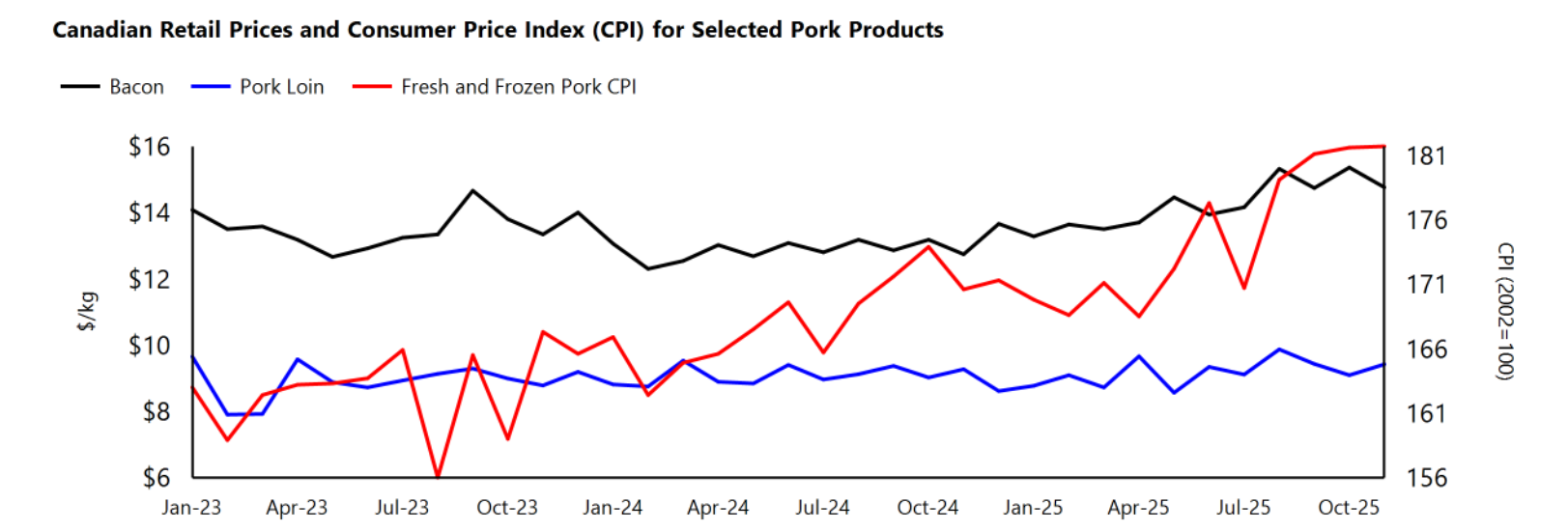
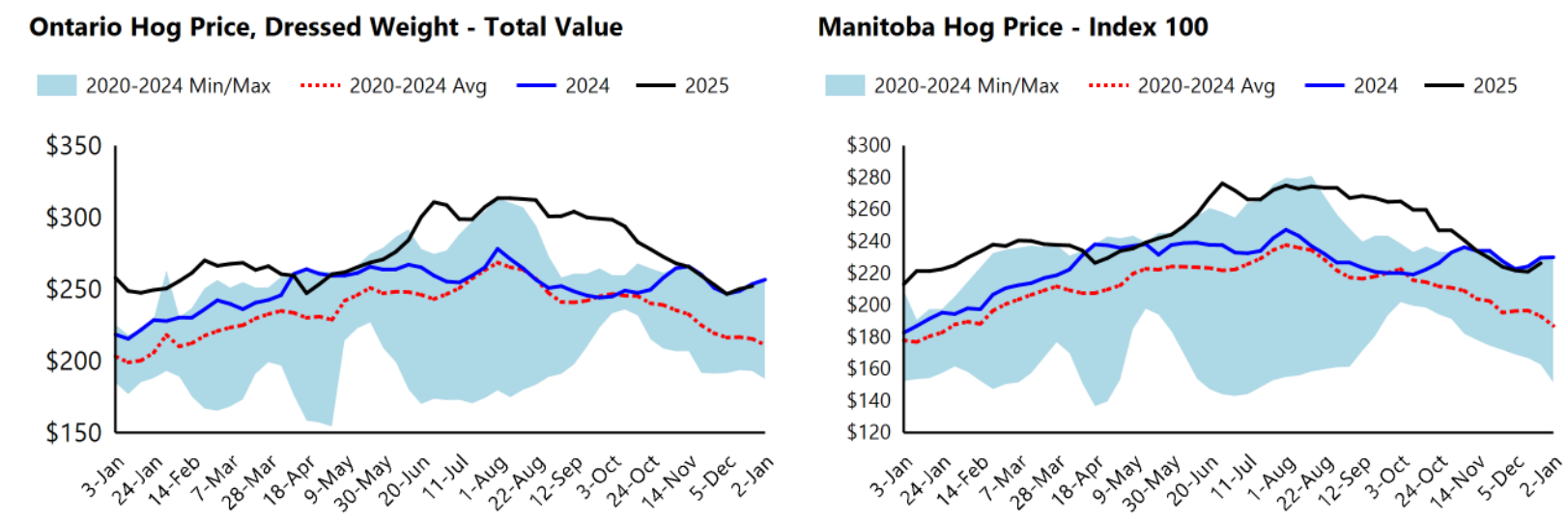
# Hog Supply at a Glance

For the Week Ending 2025-12-20

## Canadian Prices

Provincial Hog Prices**						
\$CAD/100 kg	Current Week			Year to Date*		
	2025-12-20	2024-12-21	% Chg	2025-12-20	2024-12-21	% Chg
British Columbia	\$214.36	\$221.49	-3.2%	\$243.28	\$217.49	11.9%
Alberta	\$223.20	\$225.90	-1.2%	\$246.63	\$222.12	11.0%
Saskatchewan	\$204.75	\$214.05	-4.3%	\$232.26	\$207.99	11.7%
Manitoba	\$226.10	\$229.55	-1.5%	\$246.13	\$224.11	9.8%
Ontario	\$252.02	\$253.46	-0.6%	\$275.94	\$250.64	10.1%
Quebec	\$216.07	\$216.91	-0.4%	\$227.51	\$206.93	9.9%
New Brunswick	\$208.41	\$218.16	-4.5%	\$239.12	\$210.59	13.5%
Prince Edward Island	\$216.07	\$216.91	-0.4%	\$227.51	\$206.93	9.9%
Nova Scotia	\$215.00	\$223.63	-3.9%	\$248.63	\$218.55	13.8%

\*Simple Average of Weekly Price; \*\*Index 100, except Ontario which is total value FOB yard price



Sources: Provincial Governments, Provincial Pork Associations, Statistics Canada

For Additional Data: [Red meat and livestock price reports - agriculture.canada.ca](#), [Monthly average retail prices for selected products-Statistics Canada](#), [Consumer Price Index, monthly, not seasonally adjusted-Statistics Canada](#)

# Hog Supply at a Glance

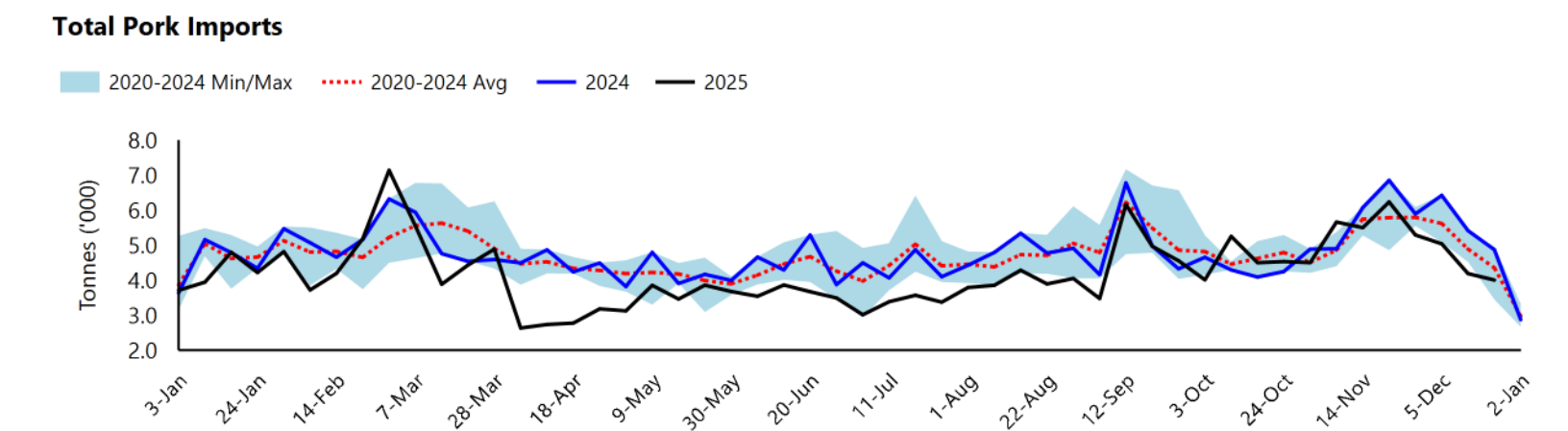
For the Week Ending

2025-12-20

## Canadian Pork Imports and Exports

### Canadian Pork Imports (Tonnes)

		Current Week			Year to Date		
		2025-12-20	2024-12-21	% Chg	2025-12-20	2024-12-21	% Chg
Fresh and Frozen	United States	2,298	2,710	-15.2%	107,261	135,292	-20.7%
	Brazil	126	50		12,084	8,400	43.9%
	Denmark	23	196	-88.0%	9,353	4,979	87.8%
	Germany	0	133	-100.0%	2,898	7,560	-61.7%
	Others	70	215	-67.4%	6,577	6,046	8.8%
	Total	2,517	3,305	-23.8%	138,173	162,277	-14.9%
Processed	United States	1,383	1,440	-3.9%	68,245	75,522	-9.6%
	Italy	43	62	-30.9%	5,395	4,880	10.6%
	Denmark	0	34	-100.0%	1,353	972	39.3%
	China	17	0		534	864	-38.3%
	Others	11	26	-58.0%	1,461	1,619	-9.7%
	Total	1,454	1,562	-6.9%	76,988	83,856	-8.2%
Fat		41	13	225.5%	659	184	258.5%
Total		4,012	4,879	-17.8%	215,820	246,317	-12.4%



Source: Canadian Food Inspection Agency  
For Additional Data: [Red meat trade reports - agriculture.canada.ca](#)

# Hog Supply at a Glance

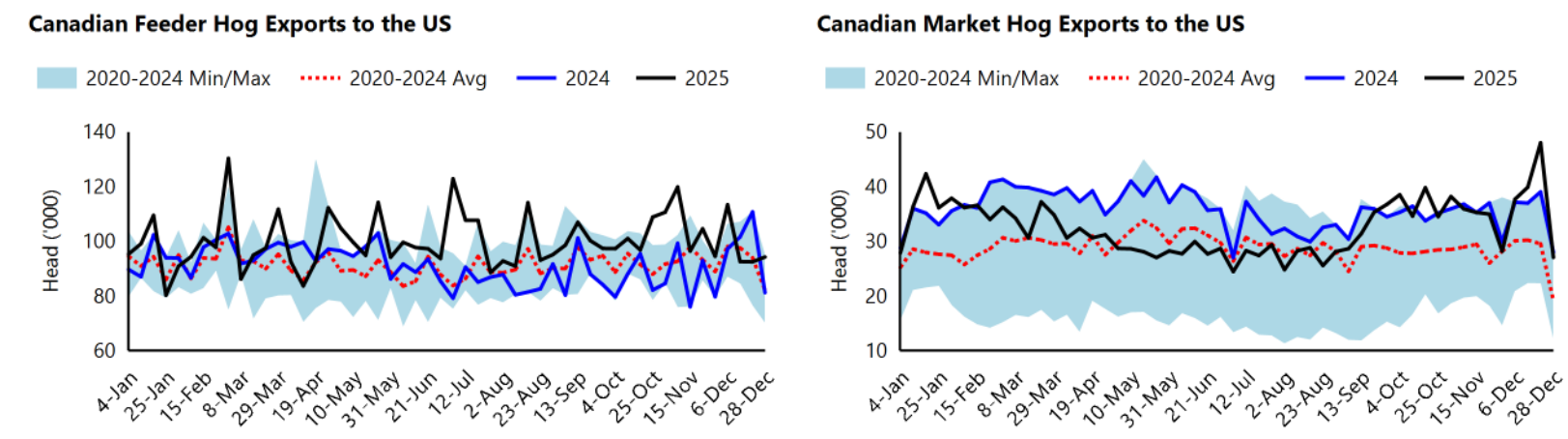
For the Week Ending 2025-12-20

## Canadian Imports and Exports (Continued)

Canadian Exports of Pork Products												
	Tonnes						'000 Dollars					
	October			Year to Date			October			Year to Date		
	2025	2024	% Chg	2025	2024	% Chg	2025	2024	% Chg	2025	2024	% Chg
United States	35,270	35,759	-1.4%	311,574	343,385	-9.3%	180,245	158,330	13.8%	1,541,438	1,484,114	3.9%
Japan	26,839	25,797	4.0%	287,691	237,283	21.2%	148,086	141,067	5.0%	1,531,472	1,257,828	21.8%
Mexico	20,428	15,835	29.0%	187,253	156,508	19.6%	58,372	39,257	48.7%	443,329	378,563	17.1%
China	10,572	21,123	-49.9%	151,227	170,972	-11.5%	23,783	49,082	-51.5%	314,477	389,323	-19.2%
South Korea	7,251	5,408	34.1%	79,823	68,238	17.0%	36,377	28,822	26.2%	401,835	333,284	20.6%
Philippines	5,604	6,754	-17.0%	78,527	92,587	-15.2%	14,266	19,884	-28.3%	205,591	249,478	-17.6%
Taiwan	4,715	4,145	13.8%	42,772	33,724	26.8%	17,919	15,939	12.4%	154,228	120,224	28.3%
Colombia	3,456	3,204	7.9%	22,403	20,236	10.7%	11,106	8,664	28.2%	73,788	60,490	22.0%
Viet Nam	293	390	-24.8%	8,279	13,598	-39.1%	600	762	-21.3%	19,050	30,865	-38.3%
Australia	813	711	14.4%	6,912	10,947	-36.9%	3,563	2,655	34.2%	26,327	37,676	-30.1%
European Union	194	25	672.2%	750	1,376	-45.5%	1,362	157	766.8%	4,544	5,168	-12.1%
Others	5,475	6,147	-10.9%	52,908	85,358	-38.0%	18,671	20,327	-8.1%	182,627	198,398	-7.9%
Total	120,909	125,298	-3.5%	1,230,118	1,234,213	-0.3%	514,349	484,947	6.1%	4,898,706	4,545,411	7.8%

Canadian Exports of Live Hogs to the United States*						
Head	Current Week			Year to Date		
	2025-12-13	2024-12-14	% Chg	2025-12-13	2024-12-14	% Chg
Feeder	92,617	101,630	-8.9%	5,019,892	4,559,784	10.1%
Slaughter Barrows/Gilts	33,167	30,594	8.4%	1,311,945	1,466,966	-10.6%
Slaughter Sows/Boars	6,727	6,396	5.2%	303,241	326,863	-7.2%
Total	132,511	138,620	-4.4%	6,635,078	6,353,613	-0.1%

\*Data lags by one week



Sources: United States Department of Agriculture-Animal and Plant Health Inspection Service, Statistics Canada  
For Additional Data: [Red meat trade reports - agriculture.canada.ca](https://www.agriculture.canada.ca/red-meat-trade-reports)

# Hog Supply at a Glance

For the Week Ending

2025-12-20

## United States Market Data

United States Federal Slaughter Under Federal Inspection						
	Current Week*			Year to Date		
	2025-12-13	2024-12-14	% Chg	2025-12-13	2024-12-14	% Chg
Head Slaughtered (x1,000)	2,733	2,560	6.7%	122,468	123,517	-0.8%
Meat Production (Million lbs)	598	555	7.8%	26,341	26,472	-0.5%
Live Weight (lbs)	294	291	1.0%			
Dressed Weight (lbs)	219	217	0.9%			

\*Actuals only, lags by one weeks

United States Regional and Composite Prices						
\$USD/100 lbs	Current Week			Year to Date*		
	2025-12-20	2024-12-21	% Chg	2025-12-20	2024-12-21	% Chg
Regional Prices						
National	\$83.47	\$83.02	0.5%	\$91.70	\$84.15	9.0%
IA/MN	\$82.55	\$82.93	-0.5%	\$91.77	\$83.78	9.5%
Eastern Cornbelt	\$86.42	\$84.10	2.8%	\$91.94	\$85.22	7.9%
Western Cornbelt	\$82.56	\$82.99	-0.5%	\$91.98	\$83.85	9.7%
Total Composite Weighted Average Prices						
Early Weaned Pigs	\$68.75	\$68.92	-0.2%	\$60.14	\$44.44	35.3%
40 Pound Feeder	\$86.96	\$88.03	-1.2%	\$86.89	\$66.04	31.6%

\*Simple Average of Weekly Price

Estimated Average Value of the Pork Carcass Cutout on the US Wholesale Market and Exchange Rate						
\$USD/ 100 lbs	Current Week			Year to Date*		
	2025-12-20	2024-12-21	% Chg	2025-12-20	2024-12-21	% Chg
Carcass	98.64	95.96	2.8%	102.96	95.73	7.6%
Loin	85.68	82.36	4.0%	90.95	91.55	-0.7%
Butt	115.36	109.76	5.1%	116.71	112.39	3.8%
Picnic	84.95	80.52	5.5%	80.32	73.86	8.8%
Rib	160.37	135.88	18.0%	154.98	146.38	5.9%
Ham	101.16	101.82	-0.6%	94.64	86.67	9.2%
Belly	124.49	122.37	1.7%	154.36	129.00	19.7%
\$USD/\$CAD	0.73	0.70	4.0%	0.72	0.73	-2.2%

\*Simple Average of Weekly Price

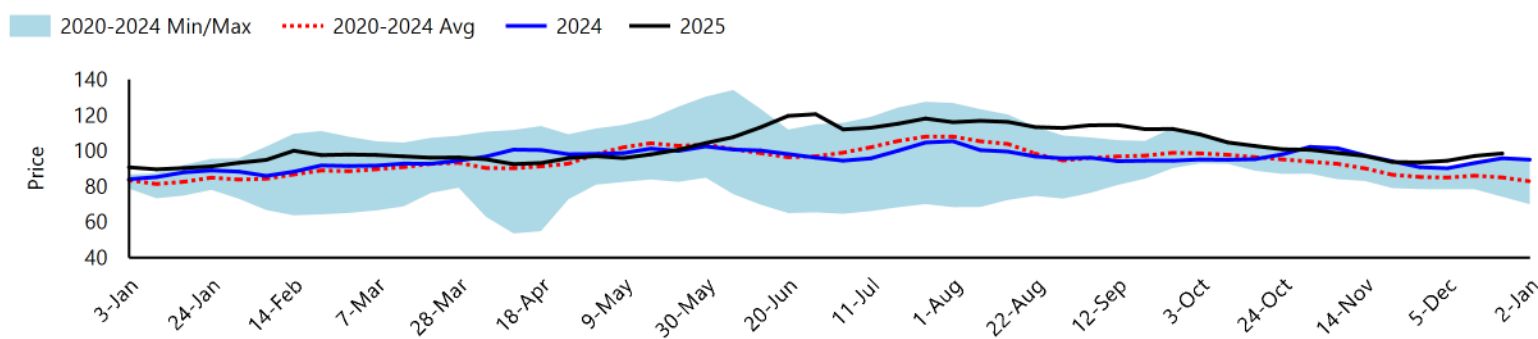
Sources: United States Department of Agriculture, Bank of Canada  
For Additional Data: [Actual Slaughter Under Federal Inspection](#), [National Direct Feeder Report](#), [National Direct Swine Report](#), [National Weekly Pork FOB Plant](#)

# Hog Supply at a Glance

For the Week Ending 2025-12-20

## United States Market Data-Continued

Pork Carcass Price on US Wholesale Market (\$USD/100lbs)



## United States Pork Imports and Exports (Tonnes)

Tonnes		Current Month			Year to Date		
		Aug-2025	Aug-2024	% Change	Aug-2025	Aug-2024	% Change
Exports	Mexico	102,011	99,319	2.7%	799,839	793,812	0.8%
	Japan	34,194	38,066	-10.2%	299,008	333,443	-10.3%
	South Korea	18,596	15,507	19.9%	210,143	224,309	-6.3%
	Canada	17,697	21,277	-16.8%	132,105	155,596	-15.1%
	Colombia	12,243	18,246	-32.9%	111,749	104,041	7.4%
	Others	61,462	61,523	-0.1%	521,373	517,884	0.7%
	Total	246,203	254,056	-3.1%	2,076,059	2,130,189	-2.5%
Imports	Canada	23,454	25,068	-6.4%	201,799	214,285	-5.8%
	Mexico	3,143	3,000	4.8%	27,352	27,200	0.6%
	Denmark	1,883	3,311	-43.1%	21,047	25,003	-15.8%
	Brazil	559	2,834	-80.3%	19,824	23,133	-14.3%
	Italy	2,309	2,037	13.4%	17,502	15,724	11.3%
	Others	5,298	5,557	-4.7%	43,671	42,944	1.7%
	Total	36,647	42,195	-13.2%	332,345	351,596	-5.5%

Source: United States Department of Agriculture,  
For Additional Data: , [Livestock and Meat International Trade Data](#)