



# Weekly Regional HOG PRICE Report

November 18, 2025

## Weekly Hog Prices

US cash hogs declined, with national cash down daily while regional cash recorded a modest improvement at the start and went unreported at the end of the week. National cash dropped \$8.15/cwt from last Friday, while the WCB fell \$5.65/cwt from the previous Friday and the ISM was \$5.54/cwt under the Friday previous. CME cash continues to decline daily though more modestly compared to cash prices, falling \$2.11/cwt under week-ago prices. Wholesale pork primal values were mixed though ribs and hams were notably lower, bringing US pork cutout -1.7% or \$1.66 lower to \$97.24 US/cwt from a week earlier.

USD	Weekly Averages					
Cash Price	Head	14-Nov	Head	7-Nov	w/w	% Chg
ISM pm		\$80.87		\$84.78	-\$3.91	-4.6%
WCB pm		\$80.94		\$84.64	-\$3.71	-4.4%
Nat pm		\$79.71		\$84.73	-\$5.02	-5.9%
CME Index*		\$88.90		\$90.68	-\$1.78	-2.0%
Sows, 300-449lbs	9,666	\$62.97	11,106	\$65.46	-\$2.49	-3.8%
Sows, 500+ lbs	10,829	\$74.55	14,663	\$75.27	-\$0.73	-1.0%
BoC Exch		1.4017		1.4089	-0.0072	-0.5%

\* Represents Friday-Thursday average

Canadian market hog values were generally \$5-\$6 per hog lower on the week, excluding those derived from lagged base pricing which were down more moderately. Ontario hogs dropped \$6.70/hog, followed by those out of Quebec which fell \$5.70/hog while those out of Manitoba were down around \$5/hog. The OlyW 20 fell \$1.90/hog while the OlyW 21 R2 was down \$1.70/hog and BP4/TC4 declined \$0.75/hog. In the US, Tyson dropped \$8.55/hog while JM fell \$7.70/hog from the previous week.

Regional Pricing, \$/hog								
Packer/Region	3 Year	Difference to OlyW21	2025 YTD	Difference to OlyW21	Last 13 weeks	Difference to OlyW21	Ending 14-Nov-25	Difference to OlyW21
IPM (MMS 5.0)	\$243.05		\$265.18		\$271.04		\$252.82	
OlyW 2021 (R2)**	\$239.14		\$262.34		\$274.63		\$251.82	
OlyW 2020*	\$250.68	\$11.54	\$280.85	\$18.51	\$296.11	\$21.48	\$266.22	\$14.40
Sig 4	\$241.37	\$2.24	\$265.47	\$3.14	\$278.26	\$3.63	\$252.90	\$1.09
BP4/TCP4	\$236.46	-\$2.67	\$259.98	-\$2.36	\$274.40	-\$0.23	\$249.85	-\$1.96
Hylife	\$240.60	\$1.46	\$262.73	\$0.39	\$272.21	-\$2.42	\$246.81	-\$5.01
Ontario***	\$244.31	\$5.17	\$274.37	\$12.03	\$287.55	\$12.92	\$254.63	\$2.81
Québec (overall)	\$232.29	-\$6.85	\$260.04	-\$2.30	\$271.20	-\$3.43	\$247.41	-\$4.41
Tyson (USD)	\$185.54	-\$53.59	\$210.91	-\$51.43	\$218.27	-\$56.37	\$182.01	-\$69.80
John Morrell (USD)	\$177.91	-\$61.23	\$203.47	-\$58.87	\$208.47	-\$66.16	\$171.85	-\$79.97

\* 3 Year average uses actual OlyW'20 only for respective weeks. Starting Jan 2020 prices includes \$0.06 per kg proximity bonus

\*\* 13 week average and the latest week uses the OlyW'21 including the floor price

\*\*\* Ontario pricing does not include any pork or cutout based formulas for market hogs

Note: OlyW and BP4/TCP4 are nearly a full 1 week lag to Sig 4, Hylife, Ontario & Quebec

Note: BP4 covers the freight of shipment in addition to the price reported.

# Weekly Hog Margins

Monitored hog margins continue to weaken on lower hog values and were further pressured by a rise in feed costs. Canadian farrow-to-finish feed costs increased \$1.50/hog while those out of the monitored US region were up more moderately, \$0.80/hog higher than the previous week.

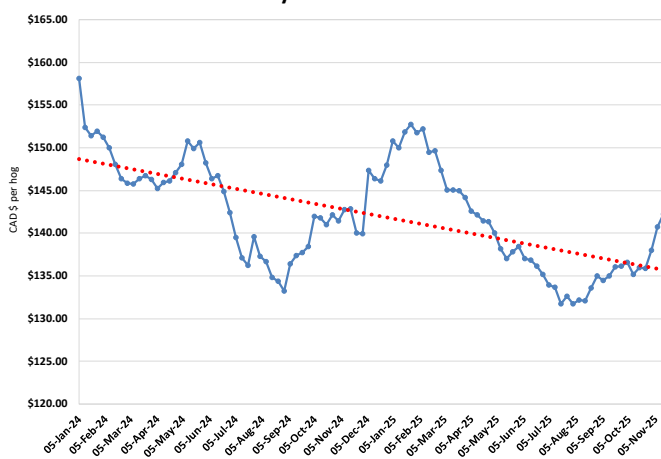
OlyW 20 margins fell \$3.40 to \$52.75/hog profits, followed by Sig 4 hog margins which weakened \$6.55 to \$51.15/hog profits out of Brandon and \$44.75/hog profits out of Lethbridge. Ontario hog margins dropped \$8.20 to shy of \$49/hog profits and Hylife margins were down \$6.55 to \$45.05/hog profits, while Quebec margins weakened \$7.20 to \$42.70/hog profits and OlyW 21 R2 margins declined \$3.20 to \$38.35/hog profits. In the US, Tyson hog margins weakened \$9.35 to \$39.75/hog profits while JM margins dropped \$8.50 to \$31.35/hog profits.

Regional MARGINS, \$/hog					
Packer/Region	14-Nov-25 Hog Price	Farrow to Finish Feed*	Fixed COP	Total COP	Weekly Margin
OlyW 20/Alberta	\$266.22	\$142.27	\$71.20	\$213.47	\$52.75
OlyW 21 (R2)/Alberta	\$251.82	\$142.27	\$71.20	\$213.47	\$38.35
Sig 4/Manitoba	\$252.90	\$131.07	\$70.70	\$201.77	\$51.13
Hylife/Manitoba	\$246.81	\$131.07	\$70.70	\$201.77	\$45.04
Ontario	\$254.63	\$132.00	\$73.68	\$205.68	\$48.95
Québec (overall)	\$247.41	\$134.57	\$70.15	\$204.72	\$42.69
Tyson (USD)/Iowa	\$182.01	\$88.07	\$54.17	\$142.24	\$39.77
John Morrell (USD)/ND	\$171.85	\$86.34	\$54.17	\$140.51	\$31.34

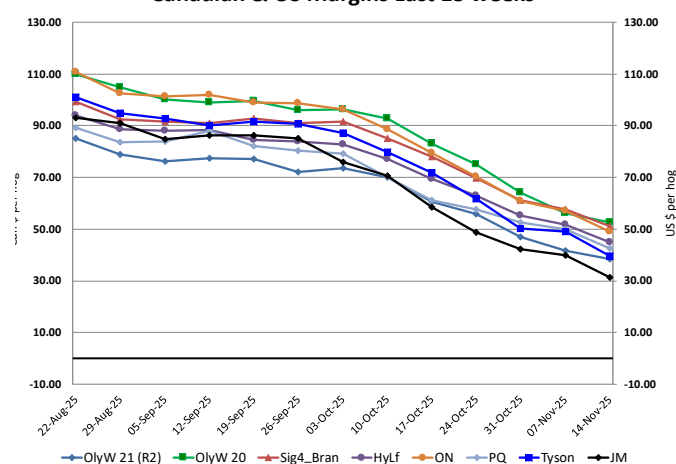
\* Feed cost variables- 285 lb hog, 1.57 F:G nursery, 2.89 F:G feeder-finish, \$20 GMD

\* Feed & Fixed COP expenses updated January 2024 onward

Calculated Weekly Can Farrow-Finish Feed Cost



Canadian & US Margins Last 13 weeks



# Monthly Hog & Feeder Pig Margins

Farrow-to-Finish Market & Range	Lean Hog Marketing USD Contract(s)	\$/c/kg	\$/hog	Corn Price /MT	Soymeal Price /MT	Wheat Price /MT	Barley Price /MT	Feed COP	Fixed COP	Total	Margin
<b>December 2025</b>	<b>Dec/Feb, \$78.79</b>	<b>\$204.77</b>	<b>\$239.48</b>	<b>\$320.16</b>	<b>\$597.32</b>	<b>\$306.74</b>	<b>\$290.78</b>	<b>\$143.10</b>	<b>\$77.05</b>	<b>\$220.15</b>	<b>\$20.23</b>
OlyW 20		\$199.27	\$241.73								\$22.48
OlyW 21 R2		\$215.43	\$235.77								\$16.51
Sig4 Lethbridge		\$199.62	\$240.94								\$21.69
<b>January 2026</b>	<b>Dec/Feb, \$79.40</b>	<b>\$195.97</b>	<b>\$229.66</b>	<b>\$322.88</b>	<b>\$612.06</b>	<b>\$307.61</b>	<b>\$293.64</b>	<b>\$144.18</b>	<b>\$77.05</b>	<b>\$221.24</b>	<b>\$9.33</b>
OlyW 20		\$189.78	\$230.82								\$10.49
OlyW 21 R2		\$207.43	\$227.48								\$7.15
Sig4 Lethbridge		\$190.69	\$230.67								\$10.34
<b>February 2026</b>	<b>Feb/Apr, \$80.11</b>	<b>\$196.39</b>	<b>\$230.17</b>	<b>\$326.86</b>	<b>\$631.20</b>	<b>\$309.39</b>	<b>\$297.82</b>	<b>\$145.74</b>	<b>\$77.05</b>	<b>\$222.79</b>	<b>\$8.28</b>
OlyW 20		\$189.34	\$230.31								\$8.43
OlyW 21 R2		\$207.01	\$227.04								\$5.16
Sig4 Lethbridge		\$192.84	\$233.15								\$11.27
<b>March 2026</b>	<b>Apr, \$82.85</b>	<b>\$200.51</b>	<b>\$234.84</b>	<b>\$329.26</b>	<b>\$639.23</b>	<b>\$310.74</b>	<b>\$287.80</b>	<b>\$146.55</b>	<b>\$77.05</b>	<b>\$223.60</b>	<b>\$12.14</b>
OlyW 20		\$194.27	\$235.98								\$13.29
OlyW 21 R2		\$208.58	\$228.67								\$5.98
Sig4 Lethbridge		\$198.68	\$239.86								\$17.17
<b>April 2026</b>	<b>Apr/Jun, \$84.09</b>	<b>\$209.43</b>	<b>\$244.80</b>	<b>\$331.15</b>	<b>\$644.62</b>	<b>\$314.19</b>	<b>\$262.70</b>	<b>\$147.42</b>	<b>\$77.05</b>	<b>\$224.47</b>	<b>\$21.23</b>
OlyW 20		\$207.02	\$250.64								\$27.07
OlyW 21 R2		\$216.14	\$236.49								\$12.93
Sig4 Lethbridge		\$205.13	\$247.27								\$23.70
<b>May 2026</b>	<b>Apr/Jun, \$93.58</b>	<b>\$214.77</b>	<b>\$250.69</b>	<b>\$333.13</b>	<b>\$648.67</b>	<b>\$320.32</b>	<b>\$285.87</b>	<b>\$148.55</b>	<b>\$77.05</b>	<b>\$225.60</b>	<b>\$25.99</b>
OlyW 20		\$212.92	\$257.41								\$32.70
OlyW 21 R2		\$222.72	\$243.31								\$18.61
Sig4 Lethbridge		\$208.69	\$251.36								\$26.66

\$/c/kg values converted to \$/hog utilizing the following variables: 103.5 kg dressed, Oly20@111.0/Oly21@100.0/Sig4@111.0 indices, Oly premiums \$12.75 per hog & Sig4 premiums \$11.56 per hog

Fixed COP includes: variable costs of \$41.45, fixed costs of \$23.63 & labour of \$11.97 for a total of \$77.05 in Non-Feed COP per hog, which does not include depreciation or interest

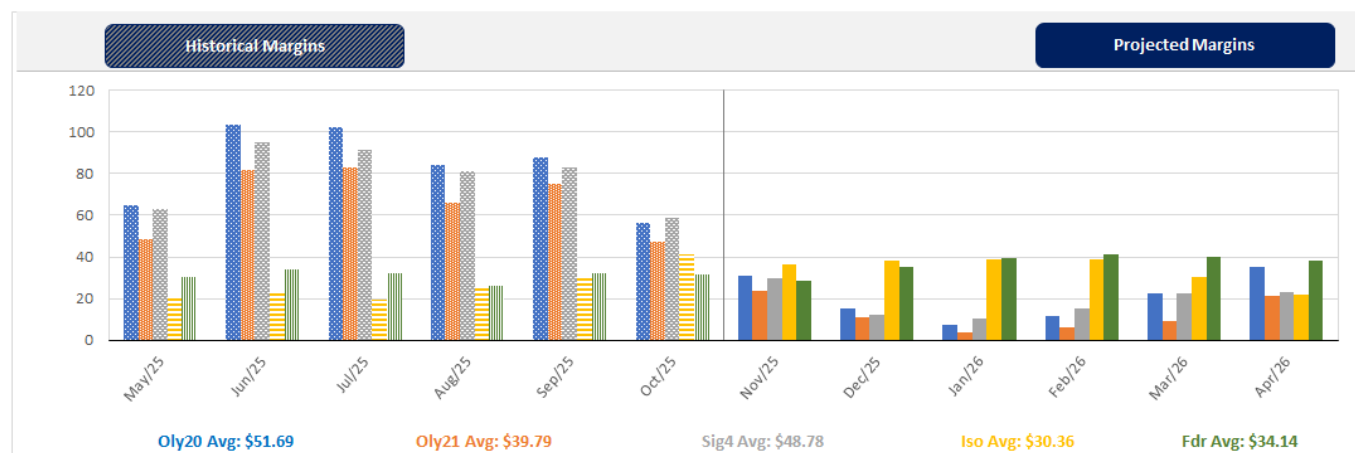
Feed COP represents a 6-month feeding period, calculated weekly.

Margin includes cull sow revenue.

Feed	Price per MT	Consumption	Cost
Sow Lactation Ration	\$ 404.90 /MT	6.18 kg/day	\$ 4.88 /hog
Sow Gestation Ration	\$ 347.55 /MT	2.76 kg/day	\$ 9.89 /hog
Boar Ration	\$ 350.00 /MT	0.00 kg/day	\$ 0.00 /hog
Creep Feed	\$ 1250.00 /MT	0.00 kg/day	\$ 0.00 /hog
N1	\$ 906.84 /MT	1.20 kg/hog	\$ 1.09 /hog
N2	\$ 613.16 /MT	5.00 kg/hog	\$ 3.07 /hog
N3	\$ 468.40 /MT	22.49 kg/hog	\$ 10.53 /hog
F1	\$ 430.27 /MT	78.43 kg/hog	\$ 33.75 /hog
F2	\$ 403.31 /MT	97.86 kg/hog	\$ 39.47 /hog
F3	\$ 385.32 /MT	120.74 kg/hog	\$ 46.52 /hog

Isolean & Feeder Pig Pricing & Margins			
Isolean Pricing & Margins (CDN\$)		14/Nov/25	13-Week Avg
Com Pro MMS 2.0		75.88	73.22
USDA Cash		89.57	86.22
USDA Formula		82.53	81.25
52% CME Futures		70.37	67.44
Com Pro MMS 2.0 ISO Margins		30.13	28.37
Feeder Pricing & Margins (CDN\$)		14/Nov/25	13-Week Avg
Com Pro MMS 2.0		99.28	106.85
USDA Cash		115.18	108.49
84% CME Futures		100.15	103.73
Com Pro MMS 2.0 Feeder Margins		36.62	40.54

For more details, please contact Alberta Pork or Commodity Professionals Inc directly.



Disclaimer: TrueAg Developments, Inc. presents this report as a snapshot of the market using current information available at the time of the report. These findings are for informational purposes only and should not be reproduced or transmitted by any means without permission. TrueAg Developments, Inc. does not guarantee and accepts no legal liability arising from or connected to, the accuracy, reliability, or completeness of any material contained in the publication.