

# Hog Supply at a Glance

Week ending April 19, 2025



## Hog Slaughter at Federally Inspected Packing Plants

Number of Head

	Week Ending		Chg	YTD Ending		Chg
	19-Apr-25	20-Apr-24		19-Apr-25	20-Apr-24	
West	160,492	174,042	↓ -7.8%	2,889,402	2,806,653	↑ 2.9%
East	213,983	235,569	↓ -9.2%	3,608,432	3,482,012	↑ 3.6%
<b>Canada</b>	<b>374,475</b>	<b>409,611</b>	<b>↓ -8.6%</b>	<b>6,497,834</b>	<b>6,288,665</b>	<b>↑ 3.3%</b>
<b>Carcass weight (kg)*[1]</b>	<b>111.55</b>	<b>112.00</b>	<b>↓ -0.4%</b>	<b>112.40</b>	<b>111.55</b>	<b>↑ 0.8%</b>
<b>Pork Production (t)</b>	<b>41,773</b>	<b>45,876</b>	<b>↓ -8.9%</b>	<b>730,357</b>	<b>701,501</b>	<b>↑ 4.1%</b>

[1] Week ending April 19 2025 (kg)

Source: Canadian Food Inspection Agency (CFIA)

Note: West (BC, AB, SK, MB) and East (ON, QC, NB, NS, PE)

## Hog Prices [1]

CDN\$/100kg

	Week Ending		Chg	YTD Avg Price Ending		Chg
	19-Apr-25	20-Apr-24		19-Apr-25	20-Apr-24	
British Columbia	231.60	225.82	↑ 2.6%	230.10	196.80	↑ 16.9%
Alberta	227.60	233.30	↓ -2.4%	232.51	204.46	↑ 13.7%
Saskatchewan	210.94	221.79	↓ -4.9%	219.37	190.30	↑ 15.3%
Manitoba	226.30	237.94	↓ -4.9%	230.90	207.16	↑ 11.5%
Ontario [1]	246.99	263.77	↓ -6.4%	258.58	236.06	↑ 9.5%
Quebec **	199.09	216.90	↓ -8.2%	215.35	192.63	↑ 11.8%
New Brunswick	214.40	227.57	↓ -5.8%	223.94	190.29	↑ 17.7%
Nova Scotia	243.00	229.71	↑ 5.8%	233.05	194.44	↑ 19.9%
Prince Edward Island	199.09	216.90	↓ -8.2%	215.35	192.63	↑ 11.8%

[1] Provincial prices reflect Index 100, except Ontario which is total value FOB yard price.

\*\*Price formula for Quebec includes reference to USDA wholesale pork cutout price

Source: Provincial Pork Associations, Provincial Governments and the USDA

## Canadian Hog Slaughter by Province of Origin (federal & provincial slaughter)

Number of Head

	Week Ending		Chg	YTD Ending		Chg
	19-Apr-25	20-Apr-24		19-Apr-25	20-Apr-24	
British Columbia	3,170	2,739	↑ 15.7%	46,880	49,714	↓ -5.7%
Alberta	34,041	39,447	↓ -13.7%	612,996	634,756	↓ -3.4%
Saskatchewan	28,118	33,947	↓ -17.2%	523,132	523,373	↓ 0.0%
Manitoba	96,280	101,354	↓ -5.0%	1,726,213	1,668,802	↑ 3.4%
Ontario	92,278	117,137	↓ -21.2%	1,754,053	1,669,536	↑ 5.1%
Quebec	137,637	130,870	↑ 5.2%	2,093,949	1,978,002	↑ 5.9%
New Brunswick	282	543	↓ -48.1%	2,279	7,931	↓ -71.3%
Nova Scotia	311	139	-	3,784	2,252	↑ 68.0%
Prince Edward Island	343	1,261	↓ -72.8%	7,286	15,175	↓ -52.0%
<b>Canada</b>	<b>392,460</b>	<b>427,437</b>	<b>↓ -8.2%</b>	<b>6,770,572</b>	<b>6,549,541</b>	<b>↑ 3.4%</b>

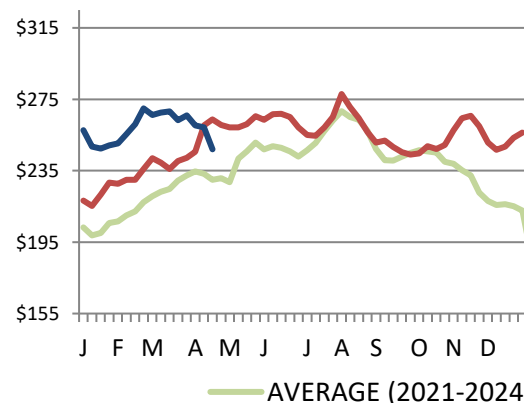
## Estimated Sow/Boar Slaughter (includes federal & provincial slaughter)

West	2,710	2,532	↑ 7.0%	50,459	38,451	↑ 31.2%
East	673	899	↓ -25.1%	10,588	14,834	↓ -28.6%
<b>Canada</b>	<b>3,383</b>	<b>3,431</b>	<b>↓ -1.4%</b>	<b>61,047</b>	<b>53,285</b>	<b>↑ 14.6%</b>

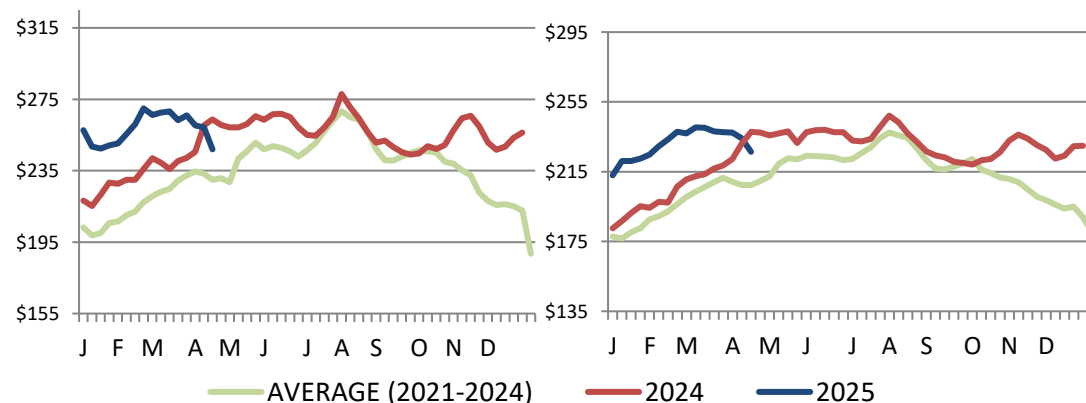
Source: CFIA and Provincial Governments

## Ontario Hog Price - Dressed Weight

(Total Value FOB yard)



## Manitoba Hog Price - Index 100



Weekly Weighted Avg. Price (CDN\$/100kg)

Source: Provincial Pork Associations, Provincial Governments and the USDA

## Exports

### Canadian Pork Exports

Metric tonnes

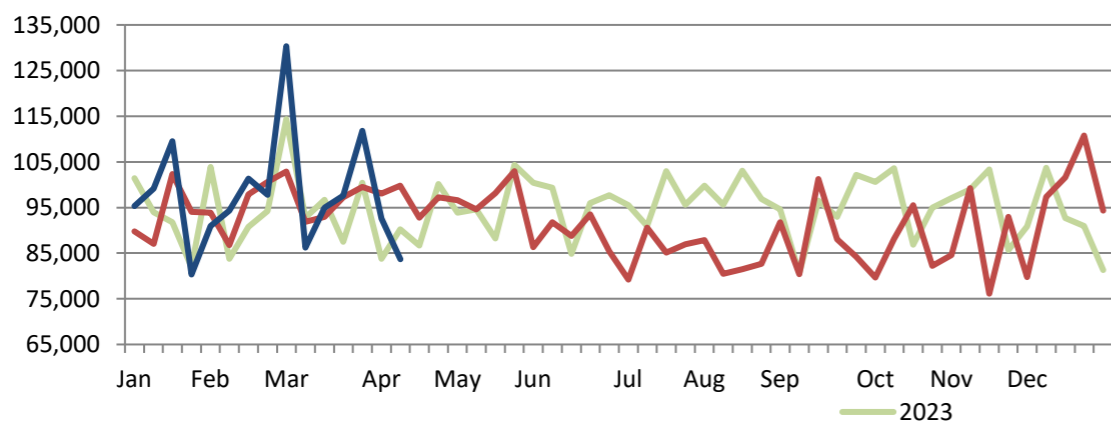
	Monthly		Chg	YTD Ending		Chg
	Feb-25	Feb-24		Feb-25	Feb-24	
Japan	43,253	23,966	↑ 80.5%	67,038	52,196	↑ 28.4%
United States	31,737	34,709	↓ -8.6%	66,591	70,642	↓ -5.7%
Mexico	20,466	13,671	↑ 49.7%	36,415	27,973	↑ 30.2%
China	17,334	15,601	↑ 11.1%	35,388	30,079	↑ 17.7%
South Korea	16,944	8,356	-	24,605	16,479	↑ 49.3%
Philippines	10,895	10,203	↑ 6.8%	16,427	17,278	↓ -4.9%
Taiwan	5,752	4,313	↑ 33.4%	10,760	7,908	↑ 36.1%
Colombia	3,074	1,938	↑ 58.6%	4,584	4,381	↑ 4.6%
Australia	942	1,512	↓ -37.7%	1,643	3,294	↓ -50.1%
United Arab Emirates	726	50	-	1,043	559	↑ 86.5%
EU - 27	30	185	↓ -83.7%	60	321	↓ -81.4%
Other	5,725	7,895	↓ -27.5%	10,087	13,235	↓ -23.8%
<b>Total</b>	<b>156,877</b>	<b>122,398</b>	<b>↑ 28.2%</b>	<b>274,639</b>	<b>244,345</b>	<b>↑ 12.4%</b>

Domestic exports only (excludes re-exports)

Source: Statistics Canada

### Canadian Feeder Hog Exports to the US

	Week Ending		Chg	YTD Ending		Chg
	12-Apr-25	13-Apr-24		12-Apr-25	13-Apr-24	
Number of Head	83,706	99,747	↓ -16.1%	1,465,985	1,434,499	↑ 2.2%



Source: USDA - APHIS

PREPARED BY ANIMAL INDUSTRY DIVISION, MARKET INFORMATION SECTION

### Canadian Pork Exports

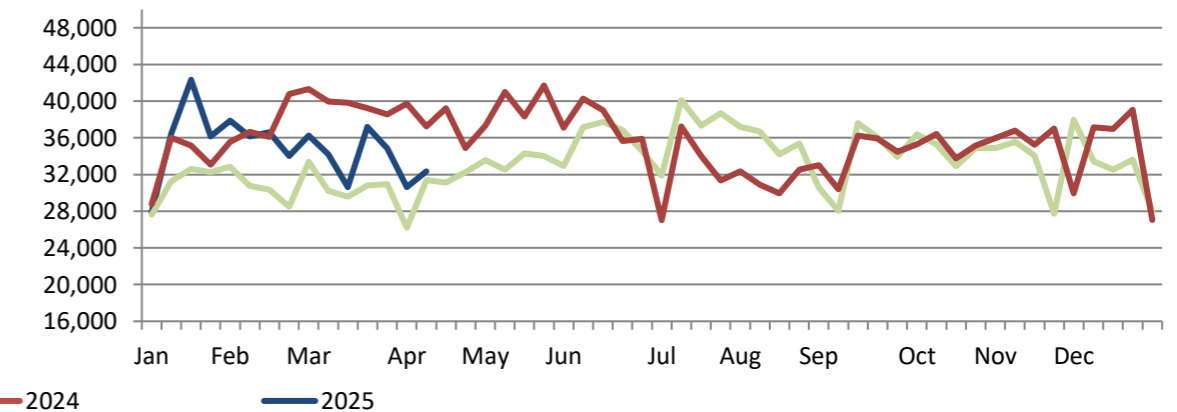
CDN\$ ('000)

	Monthly		Chg	YTD Ending		Chg
	Feb-25	Feb-24		Feb-25	Feb-24	
Japan	227,556	121,483	↑ 87.3%	354,094	265,625	↑ 33.3%
United States	154,919	145,103	↑ 6.8%	317,985	291,171	↑ 9.2%
Mexico	40,936	30,193	↑ 35.6%	79,262	61,354	↑ 29.2%
China	38,465	34,851	↑ 10.4%	81,305	66,879	↑ 21.6%
South Korea	67,941	39,263	↑ 73.0%	102,330	76,829	↑ 33.2%
Philippines	28,008	25,424	↑ 10.2%	44,885	44,243	↑ 1.5%
Taiwan	20,747	14,568	↑ 42.4%	39,457	26,018	↑ 51.7%
Colombia	9,874	5,415	↑ 82.3%	15,216	12,738	↑ 19.5%
Australia	3,890	4,334	↓ -10.2%	6,215	9,810	↓ -36.6%
United Arab Emirates	2,104	114	-	2,984	1,496	↑ 99.5%
EU - 27	172	620	↓ -72.2%	375	1,026	↓ -63.5%
Other	18,701	24,829	↓ -24.7%	32,650	41,985	↓ -22.2%
<b>Total</b>	<b>613,313</b>	<b>446,197</b>	<b>↑ 37.5%</b>	<b>1,076,760</b>	<b>899,175</b>	<b>↑ 19.7%</b>

Domestic exports only (excludes re-exports)

### Canadian Market Hogs/Sows/Boars Exports to the US

	Week Ending		Chg	YTD Ending		Chg
	12-Apr-25	13-Apr-24		12-Apr-25	13-Apr-24	
Number of Head	32,359	37,257	↓ -13.1%	523,519	558,012	↓ -6.2%



## Imports

Metric tonnes

	Week Ending		Chg	YTD Ending		Chg
	19-Apr-25	20-Apr-24		19-Apr-25	20-Apr-24	
<b>**Fresh and Frozen Pork</b>						
United States	1,423	2,457	↓ -42.1%	34,604	42,545	↓ -18.7%
Germany	0	170	-	2,299	2,526	↓ -9.0%
Denmark	0	98	-	2,101	1,680	↑ 25.1%
Brazil	0	176	-	2,062	3,499	↓ -41.1%
Spain	0	26	-	494	455	↑ 8.8%
Other	22	75	↓ -70.6%	1,344	1,264	↑ 6.3%
<b>Total Fresh and Frozen</b>	<b>1,445</b>	<b>3,002</b>	<b>↓ -51.9%</b>	<b>42,904</b>	<b>51,968</b>	<b>↓ -17.4%</b>

Source: CFIA

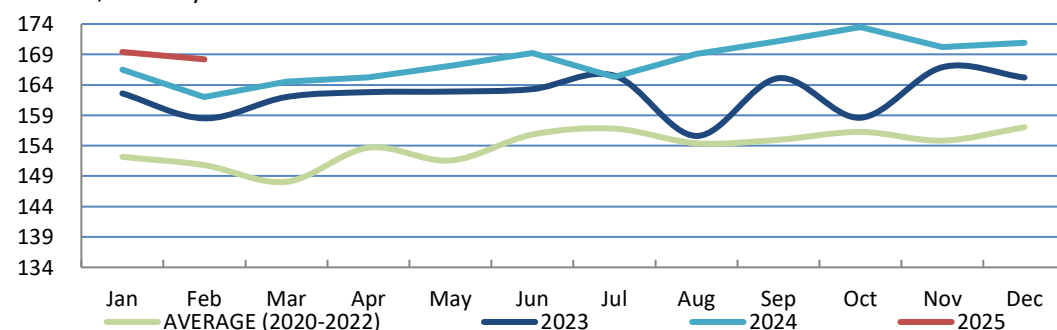
	Week Ending		Chg	YTD Ending		Chg
	19-Apr-25	20-Apr-24		19-Apr-25	20-Apr-24	
<b>**Pork Processed</b>						
United States	782	1,078	↓ -27.4%	25,165	23,363	↑ 7.7%
Italy	0	107	-	2,626	1,521	↑ 72.6%
Denmark	0	0	-	407	290	↑ 40.4%
Other	19	57	↓ -66.5%	533	841	↓ -36.6%
<b>Total Processed</b>	<b>801</b>	<b>1,243</b>	<b>↓ -35.5%</b>	<b>28,731</b>	<b>26,014</b>	<b>↑ 10.4%</b>
<b>Total Pork Fat</b>	<b>0</b>	<b>0</b>	<b>-</b>	<b>221</b>	<b>117</b>	<b>↑ 89.6%</b>
<b>Total</b>	<b>2,246</b>	<b>4,244</b>	<b>↓ -47.1%</b>	<b>71,857</b>	<b>78,099</b>	<b>↓ -8.0%</b>

Source: CFIA

## Market Indicators

### Consumer Price Index - Fresh or Frozen Pork

2002 Base, Monthly



Source: Statistics Canada

### Estimated Average Value of the Pork Carcass Cutout on the US Wholesale Market

(US\$/cwt)

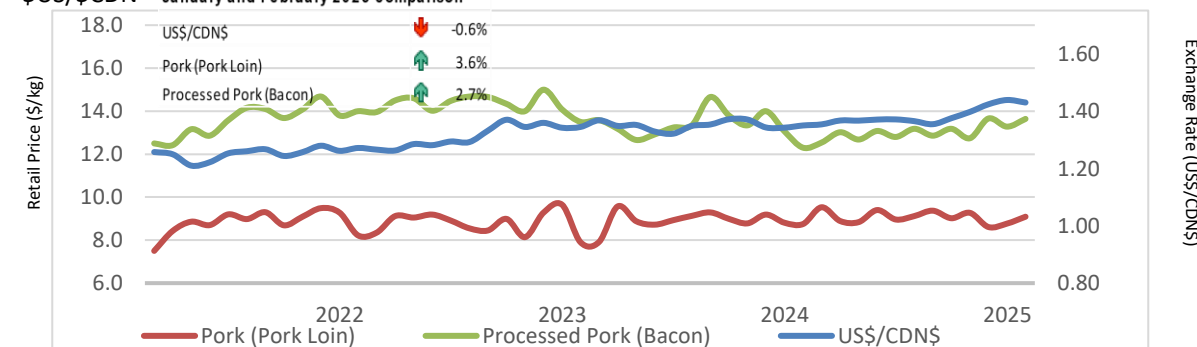
	Week Ending		Chg	YTD Avg Value Ending		Chg
	19-Apr-25	20-Apr-24		19-Apr-25	20-Apr-24	
Carcass	93.27	100.55	↓ -7.2%	94.71	91.46	↑ 3.6%
Loin	87.50	98.88	↓ -11.5%	85.66	87.85	↓ -2.5%
Butt	109.63	127.47	↓ -14.0%	108.04	109.12	↓ -1.0%
Pic	70.31	76.62	↓ -8.2%	69.28	68.32	↑ 1.4%
Rib	143.68	165.15	↓ -13.0%	147.61	149.98	↓ -1.6%
Ham	82.73	86.45	↓ -4.3%	83.81	79.13	↑ 5.9%
Belly	134.43	130.35	↑ 3.1%	141.96	126.12	↑ 12.6%

Source: USDA-APHIS: National Weekly Pork Report

### Exchange Rate and Retail Prices for Pork Products

US\$/CDN\$

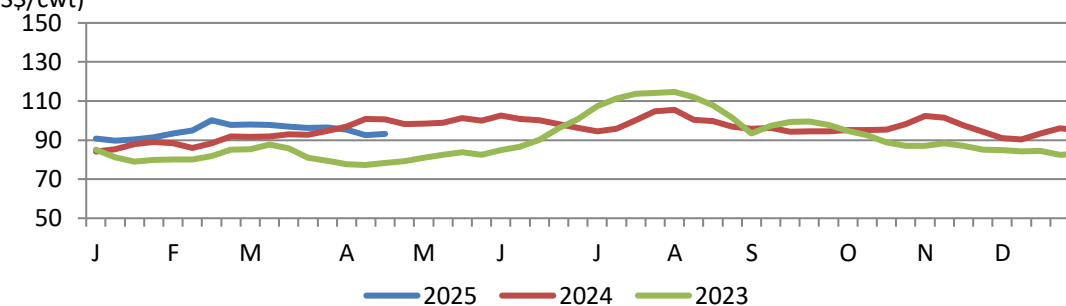
January and February 2025 comparison



Source: Statistics Canada and Bank of Canada

### Estimated Carcass Value on the US Wholesale Market

(US\$/cwt)



\* Calculations based on a 205 lb Pork Carcass. 53-54% lean, 0.65"-0.80" BF last rib

## United States

### United States Hog Slaughter and Pork Production

	Week Ending		Chg	YTD Ending		Chg
	19-Apr-25	20-Apr-24		19-Apr-25	20-Apr-24	
Slaughter ('000 head)	2,380	2,481	↓ -4.1%	38,815	40,031	↓ -3.0%
Pork Production (mil. lbs)	516	535	↓ -3.4%	8,427	8,657	↓ -2.7%
Avg Dressed Weight (lbs)	217	216	↑ 0.5%			

Source: United State Department of Agriculture (USDA)

### United States Hog Market Prices - By Region

Weighted weekly average carcass (US\$/cwt)

	Week Ending		Chg	YTD Ending		Chg
	19-Apr-25	20-Apr-24		19-Apr-25	20-Apr-24	
US - National	84.15	89.95	↓ -6.4%	84.86	79.08	↑ 7.3%
Eastern Cornbelt	84.17	89.84	↓ -6.3%	85.44	80.68	↑ 5.9%
Iowa Minnesota	84.00	89.25	↓ -5.9%	84.88	77.87	↑ 9.0%
Western Cornbelt	84.07	89.40	↓ -6.0%	84.94	77.21	↑ 10.0%

#### Total composite weighted average prices\*

	19-Apr-25	20-Apr-24	Chg	19-Apr-25	20-Apr-24	Chg
Early Weaned Pigs	44.41	46.35	↓ -4.2%	66.85	48.46	↑ 37.9%
40 lb Feeder Pigs	82.81	95.18	↓ -13.0%	103.23	80.28	↑ 28.6%

\*Includes Formula and Cash

Source: USDA: National Direct

### United States Pork Imports

Carcass weight - tonnes

	Monthly		Chg	YTD Ending		Chg
	Feb-25	Feb-24		Feb-25	Feb-24	
Canada	26,023	27,570	↓ -5.6%	52,688	55,612	↓ -5.3%
Mexico	3,250	3,544	↓ -8.3%	6,745	6,867	↓ -1.8%
Brazil	2,516	3,135	↓ -19.7%	6,145	6,652	↓ -7.6%
Italy	2,473	1,984	↑ 24.6%	4,285	3,415	↑ 25.5%
Denmark	2,010	2,256	↓ -10.9%	4,183	5,466	↓ -23.5%
Other	4,478	4,988	↓ -10.2%	9,559	9,918	↓ -3.6%
<b>Total</b>	<b>40,749</b>	<b>43,476</b>	<b>↓ -6.3%</b>	<b>83,605</b>	<b>87,929</b>	<b>↓ -4.9%</b>

Source: USDA, Economic Research Service

### United States Pork Exports

Carcass weight - tonnes

	Monthly		Chg	YTD Ending		Chg
	Feb-25	Feb-24		Feb-25	Feb-24	
Mexico	97,325	99,006	↓ -1.7%	206,222	205,965	↑ 0.1%
Japan	32,298	39,738	↓ -18.7%	63,161	79,655	↓ -20.7%
South Korea	25,265	29,427	↓ -14.1%	48,794	58,374	↓ -16.4%
China	16,947	14,434	↑ 17.4%	35,975	26,244	↑ 37.1%
Canada	18,352	19,438	↓ -5.6%	35,615	38,563	↓ -7.6%
Other	66,195	67,140	↓ -1.4%	128,259	126,991	↑ 1.0%
<b>Total</b>	<b>256,382</b>	<b>269,185</b>	<b>↓ -4.8%</b>	<b>518,026</b>	<b>535,793</b>	<b>↓ -3.3%</b>

Source: USDA, Economic Research Service

### For more information, please contact

Francois Bédard

Sector Specialist - Pork

Animal Industry Division

[Francois.Bedard@agr.gc.ca](mailto:Francois.Bedard@agr.gc.ca)

Tel.: 613-282-4103