

Newsletter #4

CWSHIN

About us

CWSHIN serves western swine producers, swine herd practitioners and governments to improve swine health, production, and the economic prosperity of the sector (www.cwshin.ca)

Porcine Epidemic Diarrhea (PED) in Manitoba

8 APRIL 2025

Authored by: Jette Christensen, Manager



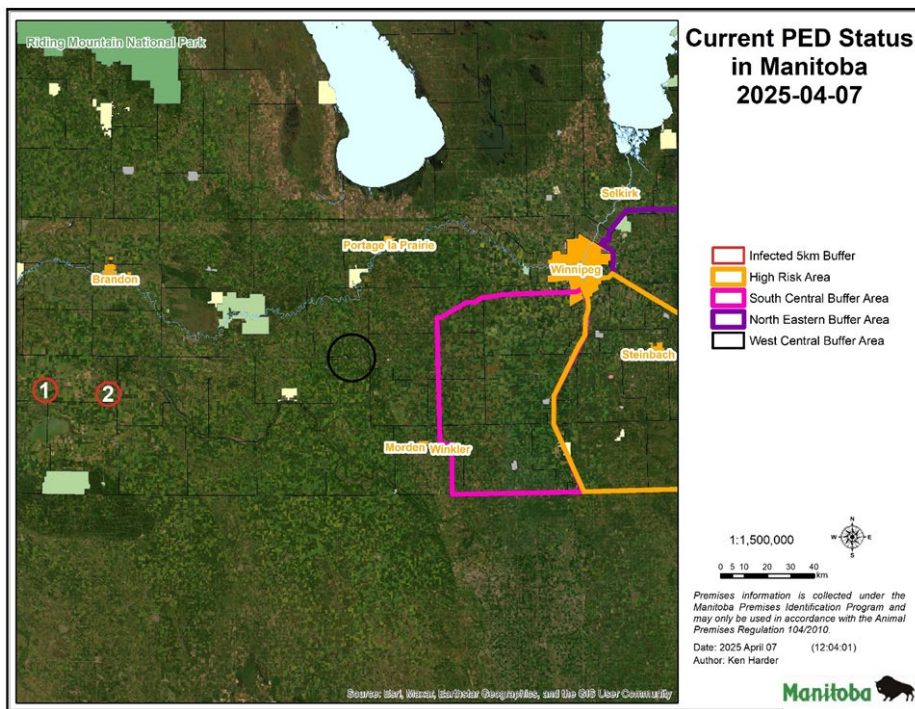
Porcine Epidemic Diarrhea (PED) in Manitoba

Sit Report #002 7 April 2025

Two swine premises in the RM of Grasslands have been confirmed to have Porcine Epidemic Diarrhea (PED). A buffer area has been defined for both infected premises (IP).

These IPs are a nursery operation (IP001) and a linked downstream finisher (IP002). The investigation into the source of infection is underway. These two IPs are not in the high-risk area for PED and are both following the action plan as written in The Manitoba PED Elimination Plan.

Further diagnostics of a number of other contact farms is ongoing so expect updates in the coming days.



Buffer Area 1: IP01

- a. Clinical signs were observed on March 27 2025
- b. On 3 April 2025, it was confirmed that the first detected infected premises (IP001) is a nursery
- c. No other swine premises in a 5-km radius
- d. A review of contacts to IP001 is underway and further higher risk contacts may be identified through feed deliveries, service personnel, deadstock movements and livestock transport vehicles.
- e. Direct connections to the high-risk area in South-East Manitoba has not been identified.

2. Buffer Area 2: IP02

- a. Mild clinical signs were seen on 21 March 2025, but no further clinical signs were observed until this week (week of 30 March)
- b. 5 April 2025, second infected premises (IP002) a finisher site was confirmed
- c. No other swine premises in a 5-km radius
- d. A review of contacts to IP002 is underway and further higher risk contacts may be identified through feed deliveries, service personnel, deadstock movements and livestock transport vehicles.
- e. Direct connections to the high-risk area in South-East Manitoba has not been identified

An update on the following link is pending. <https://www.gov.mb.ca/agriculture/animal-health-and-welfare/animal-health/porcine-epidemic-diarrhea.html> .