

Swine Health Surveillance

4th Quarter 2023

Producer Report

This report is intended for swine producers in the western Canadian provinces.

CWSHIN serves western swine producers, swine herd practitioners and governments to improve swine health, production, and the economic prosperity of the sector.

Our surveillance objectives are to:

- Detect new emerging swine health issues,
- Detect unusual clinical presentation of known diseases,
- Provide information about endemic diseases, and
- For diseases absent in western Canada (such as Foot and Mouth Disease and African swine fever) the objective is to help provide evidence of absence of disease to support trade.

www.cwshin.ca

FEBRUARY 7

By: Jette Christensen, CWSHIN Manager



Message

We had an example that the Clinical Impression Surveys worked exactly as we hoped they would.

An increase in clinical survey score for the Neurologic syndrome was followed by

- An exploration of the survey data with detection of a cluster of high scores,
- A discussion with vets provided an explanation for the high scores.

Practical tips

If you suspect Sapovirus scour in young pigs

- Call your vet to get a proper diagnosis and help to control diarrhea.
- Sapovirus vaccination is NOT an easy solution.

Contents

Follow-up on Sapovirus.....	3
Digestive Syndrome	4
Neurologic Syndrome	5
CanSpotASF	6

Follow-up on Sapovirus

We have discussed Sapovirus at quarterly calls since January 2023 and for the next quarters we will follow up on Sapovirus.

Quarter	Sapovirus		Total	% positive (p)
	Negative	Positive		
Apr-23	0	2	2	100%
Jul-23	12	25	37	68%
Oct-23	15	27	42	64%
Total	27	54	81	

In the data from the Prairie Diagnostic Services (PDS) we had 81 cases included in the repository. PDS has been testing all cases with diarrhea for Sapovirus. In the 4th quarter, 64% cases were positive for Sapovirus. The Veterinary Diagnostic Services (VDS) will start offering a PCR for Sapovirus. Cases from VDS will be included in the CWSHIN repository next quarter.

In the Clinical Impression Surveys, 3 practices (MB, BC) commented on Sapovirus:

- Sapovirus scours was seen in early nursery
- Sapovirus was a scour pathogen found in suckling piglets.
- Affected litters appeared to wean (21 days) about 1 kg light

The take home message was that currently vaccination is not an easy solution. The effort should be to control other virus and bacteria that may cause diarrhea.

Sapovirus

Sapovirus was seen in cases with diarrhea often in combination with other pathogens.

Practical tips:

Vaccination is not an easy solution.

Invest your efforts on control of other virus and bacteria that may cause diarrhea first

Digestive Syndrome

In the Clinical Surveys some digestive syndrome cases were mentioned.

Splenic torsion (twisted spleen): Splenic torsion in sows attracted attention last quarter (Q3) and again this quarter.

It is not known how frequent the condition is in sows and finishers nor how fatal it may be.

We know it occurs in sows with a fatal outcome because it is seen as cause of death in sows in herds. However, it has also been seen as chronic healed lesions at slaughter.

It was suspected that excessive movement by sows may cause the spleen to twist.

- Case story: 330-340 sows were moved and 3 were dead the next day with twisted spleens. The barn staff mentioned that 3 sows jumped the gate during the movement, but it is not known if it was the same sows that died.

Digestive Syndrome

Splenic torsion is grouped with the Digestive syndrome.

We don't know how frequent the condition is nor how fatal.

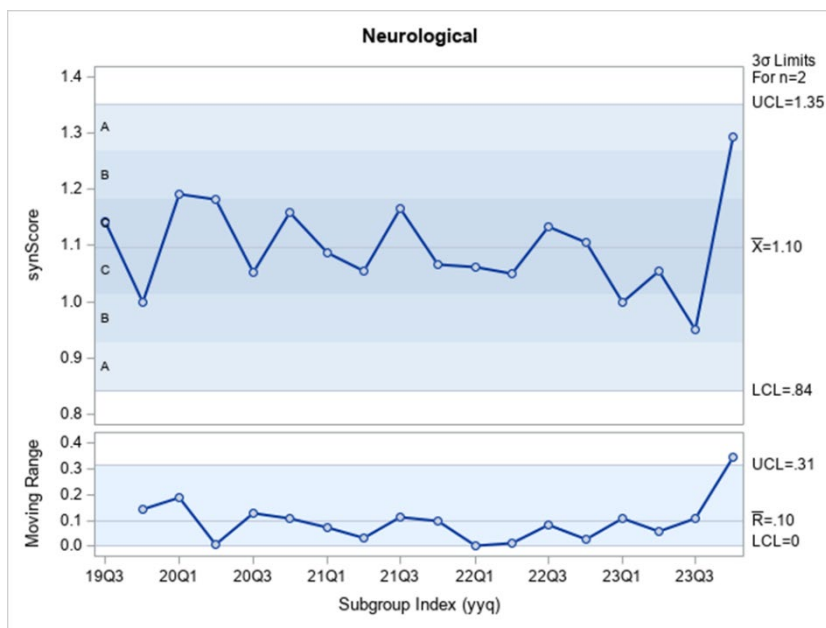
We would like to learn more about twisted spleens

Practical tips:

Please call your vet if you suspect twisted spleens causing death among sows.

Neurologic Syndrome

The Neurologic syndrome saw the highest score in the clinical impression surveys since the start of the surveys in 2019.



The high scores originated from practices that work in Alberta (a cluster).

Three vets from AB noted that they scored the neurologic syndrome higher than normal because the fall had extended into December with mild weather. As a result, they saw more *Strep suis* with neurological signs and suspected the fall to winter ventilation was a factor.

Neurologic Syndrome

We had an example that the Clinical Impression Surveys worked exactly as we hoped they would.

An increase in clinical survey score for the Neurologic syndrome was followed by

- an exploration of the survey data with detection of a cluster of high scores in Alberta
- the discussion with vets provided an explanation for the high scores.

CanSpotASF

At approved laboratories, the “rule-out testing” continued with 11% pathology cases tested for ASF the last quarter.

At abattoirs, the selection of cases for ASF testing has started at federally inspected plants (data not included). Provincially inspected abattoirs have also started in all 4 provinces in the west.

Quarter	Rule out testing at laboratories				Abattoir selection	
	Pathology cases	Cases tested for ASF	Suspicious or positive	Tested in % of pathology	Cases tested	Suspicious or positive
Jan-23	130	40	0	31%	35	0
Apr-23	92	9	0	10%	49	0
Jul-23	108	27	0	25%	9	0
Oct-23	102	11	0	11%	13	0

Acknowledge

CWSHIN would not exist without

- The participation and support of swine practitioners, laboratories, governments and swine health experts
- Funding from pork boards and governments

www.cwshin.ca



Dr Jette Christensen, Manager CWSHIN

19