

Weekly Hog Price Recap

Regional and national cash hogs buoyed up and down throughout the week, however declines recorded mid-week held the weekly averages under last reported. CME cash declined daily on moderate moves. Wholesale pork primal values were all lower, particularly bellies which declined -8.8%, weighing US pork cutout \$3.11/cwt under week ago values.

USD Cash Price	Weekly Averages				w/w	% Chg
	Head	06-Oct-23	Head	29-Sep-23		
ISM pm		\$72.56		\$76.52	-\$3.97	-5.2%
WCB pm		\$72.13		\$75.77	-\$3.65	-4.8%
Nat pm		\$72.33		\$75.89	-\$3.57	-4.7%
CME Index*		\$84.08		\$86.17	-\$2.09	-2.4%
Sows, 300-449lbs	12,208	\$29.22	12,734	\$32.67	-\$3.46	-10.6%
Sows, 500+ lbs	13,702	\$37.80	10,436	\$40.92	-\$3.12	-7.6%
BoC Exch		1.3718		1.3502	0.0216	1.6%

* Represents Friday-Thursday average

Monitored Canadian hog markets fell on lower hog prices and pork values, however received some modest support from the exchange rate. Market hog values out of Quebec and Hylife were each down \$3.60/hog, while those out of Ontario declined shy of \$3/hog. The OlyW 21 fell \$2.70/hog and the OlyW 20 was down \$2.45/hog, while the ML Sig 4 and BP4/TCP4 were each down \$1.40/hog. In the US, Tyson hogs dropped \$8.65/hog while JM was down \$7.60/hog from the week previous.

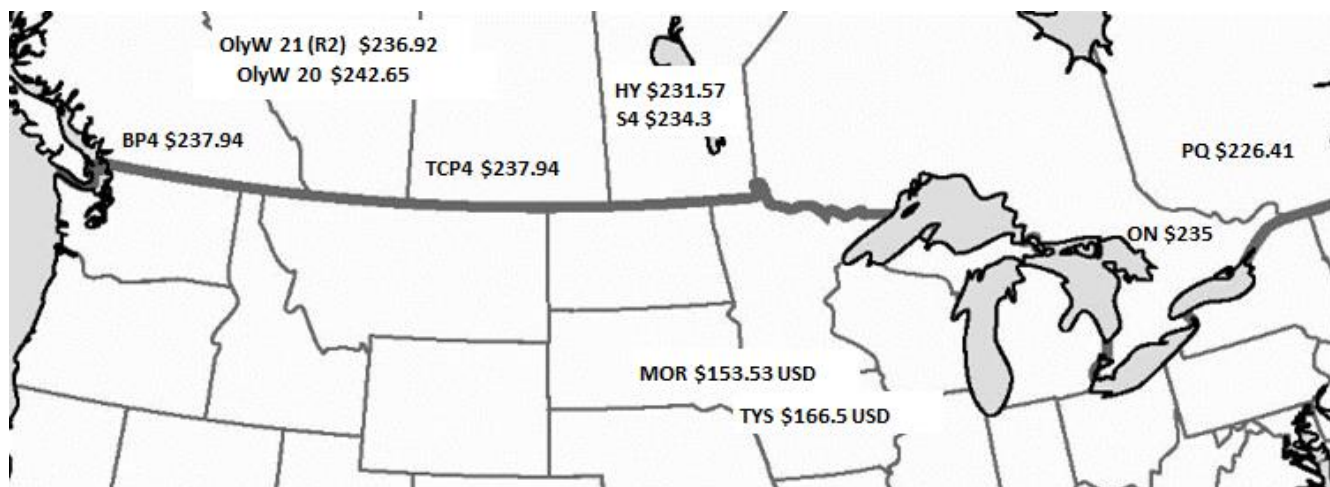
Regional Pricing, \$/hog								
Packer/Region	3 Year	Difference to OlyW21	2023 YTD AVG	Difference to OlyW21	Last 13 weeks	Difference to OlyW21	Ending 06-Oct-23	Difference to OlyW21
IPM (MMS 5.0)	\$238.24		\$234.33		\$254.94		\$238.62	
OlyW 2021 (R2)**	\$233.29		\$226.89		\$255.76		\$236.92	
OlyW 2020*	\$245.49	\$12.20	\$236.93	\$10.04	\$268.44	\$12.68	\$242.65	\$5.74
ML Sig 4	\$234.64	\$1.34	\$231.33	\$4.44	\$255.91	\$0.15	\$234.30	-\$2.62
BP4/TCP4	\$236.37	\$3.08	\$233.26	\$6.37	\$260.08	\$4.32	\$237.94	\$1.02
Hylife	\$235.49	\$2.19	\$229.64	\$2.75	\$253.98	-\$1.79	\$231.57	-\$5.35
Ontario***	\$239.46	\$6.17	\$231.05	\$4.15	\$261.59	\$5.83	\$235.00	-\$1.92
Québec (overall)	\$231.46	-\$1.84	\$215.46	-\$11.43	\$244.29	-\$11.47	\$226.41	-\$10.51
Tyson (USD)	\$192.85	-\$40.44	\$182.08	-\$44.81	\$198.97	-\$56.80	\$166.50	-\$70.42
John Morrell (USD)	\$187.09	-\$46.21	\$175.79	-\$51.10	\$189.06	-\$66.71	\$153.53	-\$83.39

* 3 Year average uses actual OlyW'20 only for respective weeks. Starting Jan 2020 prices includes \$0.06 per kg proximity bonus

** 13 week average and the latest week uses the OlyW'21 including the floor price

*** Ontario pricing does not include any pork or cutout based formulas for market hogs

To Note: OlyW and BP4/TCP4 are nearly a full 1 week lag to Sig 4, Hylife, Ontario & Quebec



Weekly Hog Margins

Monitored hog margins weakened on lower hog values, with Canadian margins pressured by another rise in feed costs. Canadian farrow-to-finish feed costs were up \$2.15/hog while those in the monitored US region were generally stable, down \$0.05/hog from the week previous.

ML Sig 4 hog margins fell \$3.55 to \$17.30/hog profits, followed by margins out of Hylife which weakened \$5.75 to \$14.60/hog profits. The OlyW 20 declined \$4.60 to \$14/hog profits, while margins out of Ontario weakened \$5.10 to \$11.70/hog profits. OlyW 21 hog margins fell \$4.85 to \$8.35/hog profits while Quebec weakened \$5.75 to \$2.85/hog profits. In the US, Tyson hog margins dropped \$8.60 lower to \$7.45/hog profits while JM margins weakened to unprofitable levels, down \$7.55 to \$3.75/hog losses for the week.

Regional MARGINS, \$/hog						
Packer/Region	06-Oct-23	Farrow to Finish			Total COP	Weekly Margin
	Hog Price	Feed*	Variable	Fixed		
OlyW 20/Alberta	\$242.65	\$165.09	\$41.45	\$22.05	\$228.59	\$14.06
OlyW 21 (R2)/Alberta	\$236.92	\$165.09	\$41.45	\$22.05	\$228.59	\$8.33
ML Sig 4/Manitoba	\$234.30	\$153.89	\$41.54	\$21.55	\$216.98	\$17.32
Hylife/Manitoba	\$231.57	\$153.89	\$41.54	\$21.55	\$216.98	\$14.59
Ontario	\$235.00	\$154.82	\$42.71	\$25.76	\$223.29	\$11.71
Québec (overall)	\$226.41	\$157.39	\$42.50	\$23.65	\$223.54	\$2.87
Tyson (USD)/Iowa	\$166.50	\$109.77	\$30.70	\$18.57	\$159.04	\$7.46
John Morrell (USD)/ND	\$153.53	\$108.04	\$30.70	\$18.57	\$157.31	-\$3.78

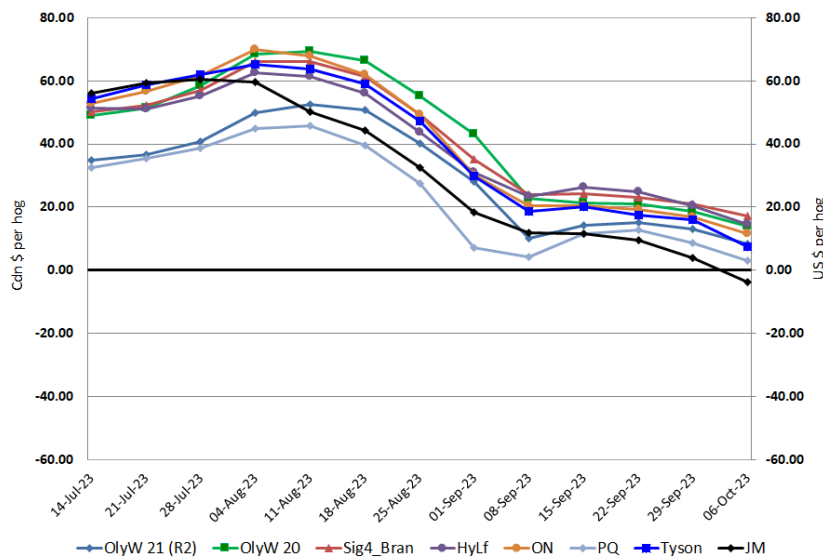
* Feed cost variables- 285 lb hog, 1.57 F:G nursery, 2.89 F:G feeder-finish, \$20 GMD

* Feed cost fixed expenses updated the week of April 8, 2022 onward

* Variable and Fixed Costs updated as of April 15, 2022

Tyson: \$7.46 USD x 1.3591 = \$10.14 CAD
 Morrell: **\$(3.78) USD x 1.3591 = **\$(5.14) CAD****

Canadian & US Margins Last 13 weeks



Disclaimer: Commodity Professionals Inc. presents this report as a snapshot of the market using current information available at the time of the report. These findings are for informational purposes only and should not be reproduced or transmitted by any means without permission. Commodity Professionals Inc. does not guarantee and accepts no legal liability arising from or connected to, the accuracy, reliability, or completeness of any material contained in the publication.