

Hog Supply at a Glance

Week ending October 21, 2023



Hog Slaughter at Federally Inspected Packing Plants

Number of Head

| | Week Ending | | Chg | YTD Ending | | Chg |
|-------------------------|----------------|----------------|----------------|-------------------|-------------------|---------------|
| | 21-Oct-23 | 22-Oct-22 | | 21-Oct-23 | 22-Oct-22 | |
| West | 182,991 | 181,310 | ↑ 0.9% | 7,409,997 | 7,212,945 | ↑ 2.7% |
| East | 226,760 | 241,082 | ↓ -5.9% | 9,470,509 | 9,629,578 | ↓ -1.7% |
| Canada | 409,751 | 422,392 | ↓ -3.0% | 16,880,506 | 16,842,523 | ↑ 0.2% |
| Carcass weight (kg)*[1] | 107.88 | 106.84 | ↑ 1.0% | 107.24 | 108.74 | ↓ -1.4% |
| Pork Production (t) | 44,204 | 45,128 | ↓ -2.0% | 1,810,265 | 1,831,456 | ↓ -1.2% |

[1] Week ending October 21, 2023 (kg)

Source: Canadian Food Inspection Agency (CFIA)

Note: West (BC, AB, SK, MB) and East (ON, QC, NB, NS, PE)

Hog Prices [1]

CDN\$/100kg

| | Week Ending | | Chg | YTD Avg Price Ending | | Chg |
|----------------------|-------------|-----------|----------|----------------------|-----------|----------|
| | 21-Oct-23 | 22-Oct-22 | | 21-Oct-23 | 22-Oct-22 | |
| British Columbia | 213.40 | 240.47 | ↓ -11.3% | 213.53 | 238.04 | ↓ -10.3% |
| Alberta | 215.70 | 244.30 | ↓ -11.7% | 214.03 | 235.35 | ↓ -9.1% |
| Saskatchewan | 199.63 | 230.67 | ↓ -13.5% | 205.32 | 229.44 | ↓ -10.5% |
| Manitoba | 213.74 | 236.43 | ↓ -9.6% | 219.03 | 240.34 | ↓ -8.9% |
| Ontario [1] | 240.25 | 267.59 | ↓ -10.2% | 238.62 | 259.40 | ↓ -8.0% |
| Quebec ** | N/A | 216.64 | - | N/A | 216.83 | - |
| New Brunswick | 199.07 | 232.86 | ↓ -14.5% | 204.30 | 235.95 | ↓ -13.4% |
| Nova Scotia | 212.17 | 240.47 | ↓ -11.8% | 213.32 | 243.36 | ↓ -12.3% |
| Prince Edward Island | N/A | 219.80 | - | N/A | 227.12 | - |

[1] Provincial prices reflect Index 100, except Ontario which is total value FOB yard price.

**Price formula for Quebec includes reference to USDA wholesale pork cutout price

Source: Provincial Pork Associations, Provincial Governments and the USDA

Canadian Hog Slaughter by Province of Origin (federal & provincial slaughter)

Number of Head

| | Week Ending | | Chg | YTD Ending | | Chg |
|----------------------|----------------|----------------|----------------|-------------------|-------------------|---------------|
| | 21-Oct-23 | 22-Oct-22 | | 21-Oct-23 | 22-Oct-22 | |
| British Columbia | 3,350 | 3,563 | ↓ -6.0% | 141,404 | 133,635 | ↑ 5.8% |
| Alberta | 45,790 | 45,568 | ↑ 0.5% | 1,756,381 | 1,765,537 | ↓ -0.5% |
| Saskatchewan | 29,265 | 34,387 | ↓ -14.9% | 1,427,086 | 1,354,223 | ↑ 5.4% |
| Manitoba | 108,654 | 95,570 | ↑ 13.7% | 4,239,577 | 4,037,562 | ↑ 5.0% |
| Ontario | 103,078 | 113,778 | ↓ -9.4% | 4,333,719 | 4,330,483 | ↑ 0.1% |
| Quebec | 135,355 | 145,133 | ↓ -6.7% | 5,627,040 | 5,837,522 | ↓ -3.6% |
| New Brunswick | 377 | 361 | ↑ 4.4% | 17,782 | 18,157 | ↓ -2.1% |
| Nova Scotia | 114 | 166 | ↓ -31.3% | 5,589 | 8,173 | ↓ -31.6% |
| Prince Edward Island | 807 | 1,202 | ↓ -32.9% | 34,561 | 46,903 | ↓ -26.3% |
| Canada | 426,790 | 439,728 | ↓ -2.9% | 17,583,139 | 17,532,195 | ↑ 0.3% |

Estimated Sow/Boar Slaughter (includes federal & provincial slaughter)

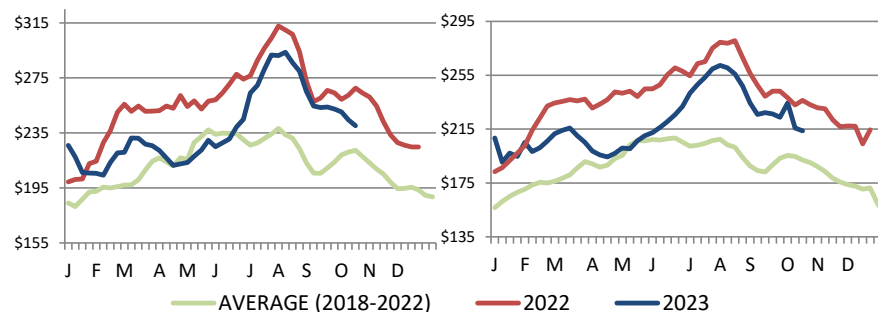
| West | 1,671 | 1,484 | ↑ 12.6% | 76,889 | 61,292 | ↑ 25.4% |
|---------------|--------------|--------------|---------------|----------------|---------------|----------------|
| East | 844 | 874 | ↓ -3.4% | 37,307 | 34,390 | ↑ 8.5% |
| Canada | 2,515 | 2,358 | ↑ 6.7% | 114,196 | 95,682 | ↑ 19.3% |

Source: CFIA and Provincial Governments

Ontario Hog Price - Dressed Weight

(Total Value FOB yard)

Manitoba Hog Price - Index 100



Weekly Weighted Avg. Price (CDN\$/100kg)

Source: Provincial Pork Associations, Provincial Governments and the USDA

Exports

Canadian Pork Exports Metric tonnes

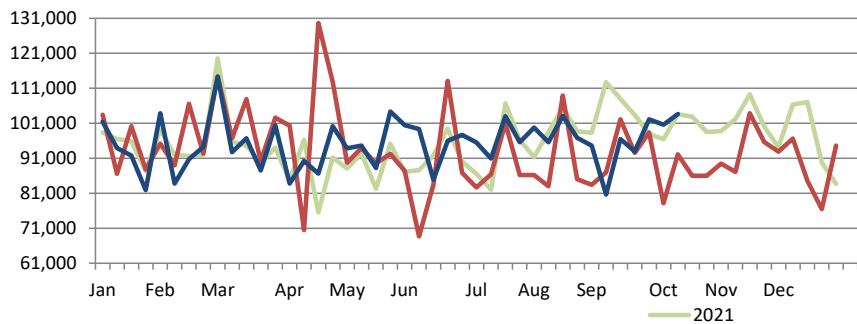
| | Monthly | | Chg | YTD Ending | | Chg |
|---------------------|----------------|----------------|----------------|----------------|----------------|----------------|
| | Aug-23 | Aug-22 | | Aug-23 | Aug-22 | |
| United States of Am | 35,183 | 38,669 | ↓ -9.0% | 286,750 | 326,601 | ↓ -12.2% |
| China | 19,379 | 11,981 | ↑ 61.8% | 167,499 | 97,571 | ↑ 71.7% |
| Japan | 15,274 | 17,136 | ↓ -10.9% | 120,401 | 156,103 | ↓ -22.9% |
| Mexico | 15,029 | 16,976 | ↓ -11.5% | 112,894 | 122,164 | ↓ -7.6% |
| Philippines | 6,545 | 9,905 | ↓ -33.9% | 79,544 | 117,457 | ↓ -32.3% |
| Taiwan | 3,061 | 1,449 | - | 37,669 | 17,706 | - |
| Korea, South | 4,104 | 5,936 | ↓ -30.9% | 32,962 | 45,201 | ↓ -27.1% |
| Colombia | 1,372 | 126 | - | 11,072 | 5,569 | ↑ 98.8% |
| Australia | 924 | 774 | ↑ 19.3% | 5,055 | 9,175 | ↓ -44.9% |
| New Zealand | 300 | 691 | ↓ -56.6% | 4,582 | 4,208 | ↑ 8.9% |
| EU - 27 | 139 | 5 | - | 1,543 | 183 | - |
| Other | 5,061 | 6,177 | ↓ -18.1% | 41,683 | 48,217 | ↓ -13.6% |
| Total | 106,370 | 109,824 | ↓ -3.1% | 901,655 | 950,154 | ↓ -5.1% |

Domestic exports only (excludes re-exports)

Source: Statistics Canada

Canadian Feeder Hog Exports to the US

| | Week Ending | | Chg | YTD Ending | | Chg |
|----------------|-------------|-----------|---------|------------|-----------|--------|
| | 14-Oct-23 | 15-Oct-22 | | 14-Oct-23 | 15-Oct-22 | |
| Number of Head | 103,621 | 92,092 | ↑ 12.5% | 3,904,850 | 3,843,976 | ↑ 1.6% |



Source: USDA - APHIS

PREPARED BY ANIMAL INDUSTRY DIVISION, MARKET INFORMATION SECTION

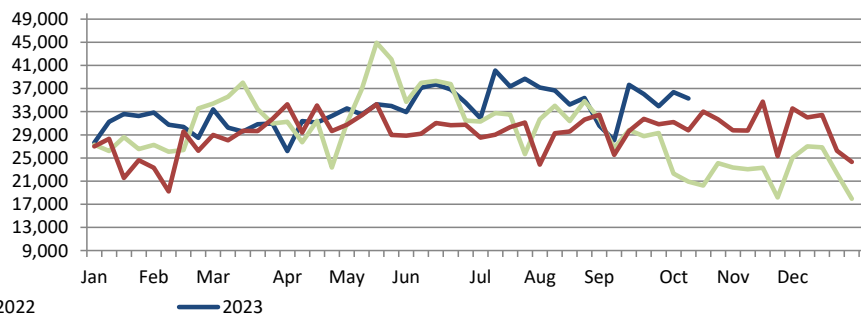
Canadian Pork Exports CDN\$ ('000)

| | Monthly | | Chg | YTD Ending | | Chg |
|---------------------|----------------|----------------|----------------|------------------|------------------|----------------|
| | Aug-23 | Aug-22 | | Aug-23 | Aug-22 | |
| United States of Am | 168,554 | 183,672 | ↓ -8.2% | 1,183,039 | 1,397,620 | ↓ -15.4% |
| China | 42,780 | 27,995 | ↑ 52.8% | 402,012 | 210,118 | ↑ 91.3% |
| Japan | 70,609 | 77,553 | ↓ -9.0% | 568,541 | 756,527 | ↓ -24.8% |
| Mexico | 41,134 | 45,408 | ↓ -9.4% | 276,938 | 265,744 | ↑ 4.2% |
| Philippines | 19,622 | 23,976 | ↓ -18.2% | 222,691 | 258,387 | ↓ -13.8% |
| Taiwan | 9,649 | 3,842 | - | 121,567 | 43,310 | - |
| Korea, South | 17,297 | 19,980 | ↓ -13.4% | 134,575 | 159,258 | ↓ -15.5% |
| Colombia | 4,353 | 263 | - | 32,037 | 10,911 | - |
| Australia | 2,880 | 2,314 | ↑ 24.4% | 15,451 | 29,687 | ↓ -48.0% |
| New Zealand | 681 | 2,354 | ↓ -71.1% | 11,873 | 11,089 | ↑ 7.1% |
| EU - 27 | 445 | 28 | - | 5,414 | 675 | - |
| Other | 14,242 | 16,257 | ↓ -12.4% | 116,402 | 117,358 | ↓ -0.8% |
| Total | 392,246 | 403,641 | ↓ -2.8% | 3,090,542 | 3,260,684 | ↓ -5.2% |

Domestic exports only (excludes re-exports)

Canadian Market Hogs/Sows/Boars Exports to the US

| | Week Ending | | Chg | YTD Ending | | Chg |
|----------------|-------------|-----------|---------|------------|-----------|---------|
| | 14-Oct-23 | 15-Oct-22 | | 14-Oct-23 | 15-Oct-22 | |
| Number of Head | 35,295 | 29,764 | ↑ 18.6% | 1,365,255 | 1,196,830 | ↑ 14.1% |



Imports

Metric tonnes

| | Week Ending | | Chg | YTD Ending | | Chg |
|--------------------------------|--------------|--------------|----------------|----------------|----------------|----------------|
| | 21-Oct-23 | 22-Oct-22 | | 21-Oct-23 | 22-Oct-22 | |
| **Fresh and Frozen Pork | | | | | | |
| United States | 2,838 | 2,303 | ↑ 23.2% | 115,324 | 86,183 | ↑ 33.8% |
| Germany | 0 | 199 | - | 7,650 | 13,752 | ↓ -44.4% |
| Denmark | 0 | 348 | - | 6,036 | 5,702 | ↑ 5.9% |
| Spain | 25 | 148 | ↓ -83.2% | 2,125 | 4,675 | ↓ -54.6% |
| Brazil | 0 | 0 | - | 1,953 | 2,942 | ↓ -33.6% |
| Other | 0 | 148 | - | 823 | 6,168 | ↓ -86.7% |
| Total Fresh and Frozen | 2,862 | 3,146 | ↓ -9.0% | 133,911 | 119,421 | ↑ 12.1% |

Source: CFIA

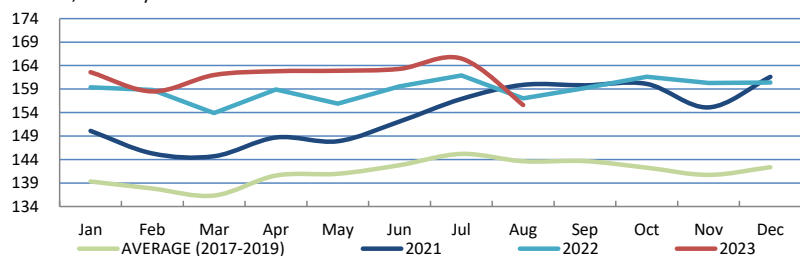
| | Week Ending | | Chg | YTD Ending | | Chg |
|-------------------------|--------------|--------------|----------------|----------------|----------------|-----------------|
| | 21-Oct-23 | 22-Oct-22 | | 21-Oct-23 | 22-Oct-22 | |
| **Pork Processed | | | | | | |
| United States | 1,112 | 1,035 | ↑ 7.4% | 54,059 | 53,610 | ↑ 0.8% |
| Italy | 8 | 151 | ↓ -95.0% | 3,492 | 4,024 | ↓ -13.2% |
| Denmark | 0 | 49 | - | 548 | 765 | ↓ -28.3% |
| Other | 55 | 33 | ↑ 65.9% | 1,644 | 1,649 | ↓ -0.3% |
| Total Processed | 1,174 | 1,268 | ↓ -7.4% | 59,743 | 60,048 | ↓ -0.5% |
| Total Pork Fat | 18 | 0 | - | 88 | 184 | ↓ -52.4% |
| Total | 4,055 | 4,414 | ↓ -8.2% | 197,272 | 179,653 | ↑ 9.8% |

Source: CFIA

Market Indicators

Consumer Price Index - Fresh or Frozen Pork

2002 Base, Monthly



Source: Statistics Canada

Estimated Average Value of the Pork Carcass Cutout on the US Wholesale Market

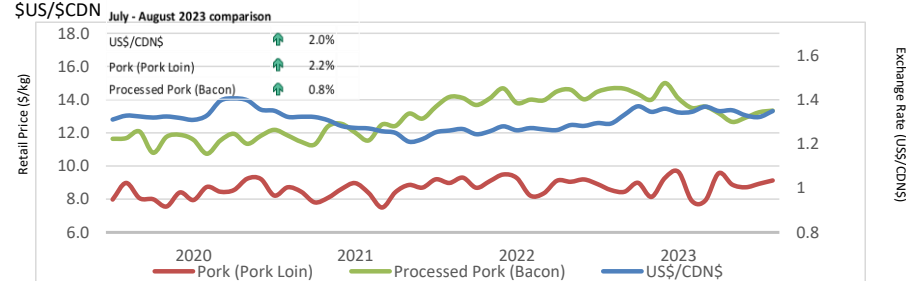
(US\$/cwt)

| | Week Ending | | Chg | YTD Avg Value Ending | | Chg |
|---------|-------------|-----------|----------|----------------------|-----------|----------|
| | 21-Oct-23 | 22-Oct-22 | | 21-Oct-23 | 22-Oct-22 | |
| Carcass | 88.76 | 102.46 | ↓ -13.4% | 90.92 | 106.66 | ↓ -14.8% |
| Loin | 91.94 | 91.62 | ↑ 0.3% | 88.99 | 99.88 | ↓ -10.9% |
| Butt | 108.29 | 101.44 | ↑ 6.8% | 114.24 | 118.75 | ↓ -3.8% |
| Pic | 74.99 | 89.35 | ↓ -16.1% | 72.75 | 72.29 | ↑ 0.6% |
| Rib | 111.87 | 122.06 | ↓ -8.3% | 118.66 | 164.58 | ↓ -27.9% |
| Ham | 80.68 | 109.89 | ↓ -26.6% | 83.64 | 91.12 | ↓ -8.2% |
| Belly | 108.33 | 143.74 | ↓ -24.6% | 115.63 | 168.84 | ↓ -31.5% |

Source: USDA-APHIS: National Weekly Pork Report

Exchange Rate and Retail Prices for Pork Products

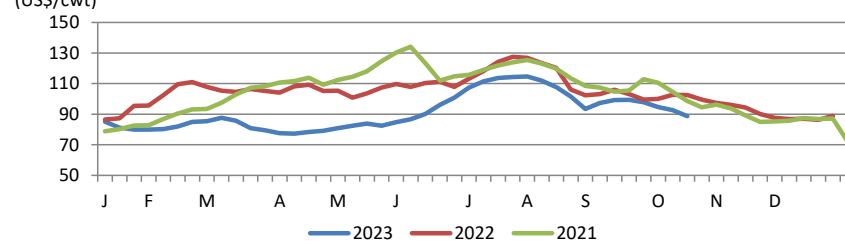
\$US/\$CDN



Source: Statistics Canada and Bank of Canada

Estimated Carcass Value on the US Wholesale Market

(US\$/cwt)



* Calculations based on a 205 lb Pork Carcass. 53-54% lean, 0.65"-0.80" BF last rib

United States

United States Hog Slaughter and Pork Production

| | Week Ending | | Chg | YTD Ending | | Chg |
|----------------------------|-------------|-----------|---------|------------|-----------|--------|
| | 21-Oct-23 | 22-Oct-22 | | 21-Oct-23 | 22-Oct-22 | |
| Slaughter ('000 head) | 2,610 | 2,570 | ↑ 1.6% | 101,911 | 100,515 | ↑ 1.4% |
| Pork Production (mil. lbs) | 547 | 551 | ↓ -0.7% | 21,696 | 21,656 | ↑ 0.2% |
| Avg Dressed Weight (lbs) | 210 | 214 | ↓ -1.9% | | | |

Source: United State Department of Agriculture (USDA)

United States Pork Imports

Carcass weight - tonnes

| | Monthly | | Chg | YTD Ending | | Chg |
|--------------|---------------|---------------|-----------------|----------------|----------------|-----------------|
| | Aug-23 | Aug-22 | | Aug-23 | Aug-22 | |
| Canada | 28,754 | 31,996 | ↓ -10.1% | 226,138 | 260,820 | ↓ -13.3% |
| Mexico | 3,420 | 4,155 | ↓ -17.7% | 28,617 | 34,822 | ↓ -17.8% |
| Denmark | 2,124 | 3,055 | ↓ -30.5% | 17,988 | 35,678 | ↓ -49.6% |
| Poland | 1,741 | 2,771 | ↓ -37.2% | 14,814 | 26,244 | ↓ -43.6% |
| Italy | 2,497 | 2,519 | ↓ -0.9% | 14,605 | 15,802 | ↓ -7.6% |
| Other | 4,728 | 6,110 | ↓ -22.6% | 35,855 | 53,961 | ↓ -33.6% |
| Total | 43,262 | 50,607 | ↓ -14.5% | 338,017 | 427,326 | ↓ -20.9% |

Source: USDA, Economic Research Service

For more information, please contact

Francois Bédard

Sector Specialist - Pork

Animal Industry Division

Francois.Bedard@agr.gc.ca

Tel.: 613-282-4103

United States Hog Market Prices - By Region

Weighted weekly average carcass (US\$/cwt)

| | Week Ending | | Chg | YTD Ending | | Chg |
|------------------|-------------|-----------|----------|------------|-----------|----------|
| | 21-Oct-23 | 22-Oct-22 | | 21-Oct-23 | 22-Oct-22 | |
| US - National | 77.83 | 92.34 | ↓ -15.7% | 83.67 | 98.60 | ↓ -15.1% |
| Eastern Cornbelt | 79.89 | 88.98 | ↓ -10.2% | 82.22 | 93.82 | ↓ -12.4% |
| Iowa Minnesota | 76.95 | 92.43 | ↓ -16.7% | 83.59 | 98.71 | ↓ -15.3% |
| Western Cornbelt | 76.95 | 92.41 | ↓ -16.7% | 83.51 | 99.13 | ↓ -15.8% |

Total composite weighted average prices*

| | 21-Oct-23 | 22-Oct-22 | Chg | 21-Oct-23 | 22-Oct-22 | Chg |
|-------------------|-----------|-----------|----------|-----------|-----------|----------|
| Early Weaned Pigs | 29.39 | 36.54 | ↓ -19.6% | 30.75 | 51.18 | ↓ -39.9% |
| 40 lb Feeder Pigs | 35.85 | 51.38 | ↓ -30.2% | 53.87 | 86.20 | ↓ -37.5% |

*Includes Formula and Cash

Source: USDA: National Direct

United States Pork Exports

Carcass weight - tonnes

| | Monthly | | Chg | YTD Ending | | Chg |
|--------------|----------------|----------------|---------------|------------------|------------------|---------------|
| | Aug-23 | Aug-22 | | Aug-23 | Aug-22 | |
| Mexico | 94,989 | 88,568 | ↑ 7.2% | 745,582 | 689,548 | ↑ 8.1% |
| Japan | 40,565 | 36,700 | ↑ 10.5% | 340,638 | 338,116 | ↑ 0.7% |
| South Korea | 16,207 | 18,727 | ↓ -13.5% | 174,889 | 167,859 | ↑ 4.2% |
| China | 16,429 | 28,797 | ↓ -42.9% | 174,178 | 169,559 | ↑ 2.7% |
| Canada | 21,740 | 18,328 | ↑ 18.6% | 160,387 | 145,803 | ↑ 10.0% |
| Other | 48,999 | 41,797 | ↑ 17.2% | 437,440 | 370,246 | ↑ 18.1% |
| Total | 238,929 | 232,917 | ↑ 2.6% | 2,033,115 | 1,881,132 | ↑ 8.1% |

Source: USDA, Economic Research Service