

Weekly Hog Price Recap

Regional and national cash hogs improved for much of the week, however did record a significant decline Friday. CME cash was up early on with Monday particularly higher, however declined daily the latter half of the week. Most wholesale pork primal values fell, excluding butts which recorded notable increases, with US pork cutout ending \$1.91/cwt under the previous week's average.

USD Cash Price	Weekly Averages				w/w	% Chg
	Head	10-Jun-22	Head	03-Jun-22		
ISM pm		\$118.51		\$115.47	\$3.04	2.6%
WCB pm		\$118.18		\$115.31	\$2.88	2.5%
Nat pm		\$115.92		\$113.64	\$2.28	2.0%
CME Index*		\$107.42		\$105.29	\$2.13	2.0%
Sows, 300-449lbs	12,959	\$47.34	10,319	\$48.77	-\$1.43	-2.9%
Sows, 500+ lbs	12,874	\$55.63	8,951	\$58.75	-\$3.12	-5.3%
BoC Exch		1.2616		1.2625	-0.0009	-0.1%

* Represents Friday-Thursday average

Market hog values generally improved \$1-\$2 per hog, however Ontario values were up \$5.10/hog from the previous week. The OlyW 20 rose \$2.35/hog, while the ML Sig 4 was up \$2.25/hog. Hog values out of Hylife were rose \$1.35/hog, followed by those out of Quebec which were up \$0.70/hog. The OlyW 21 edged \$0.20/hog higher, while BP/TC hog values were nearly unchanged from a week earlier. In the US, Tyson rose \$5.25/hog while JM was up \$6/hog from week ago levels.

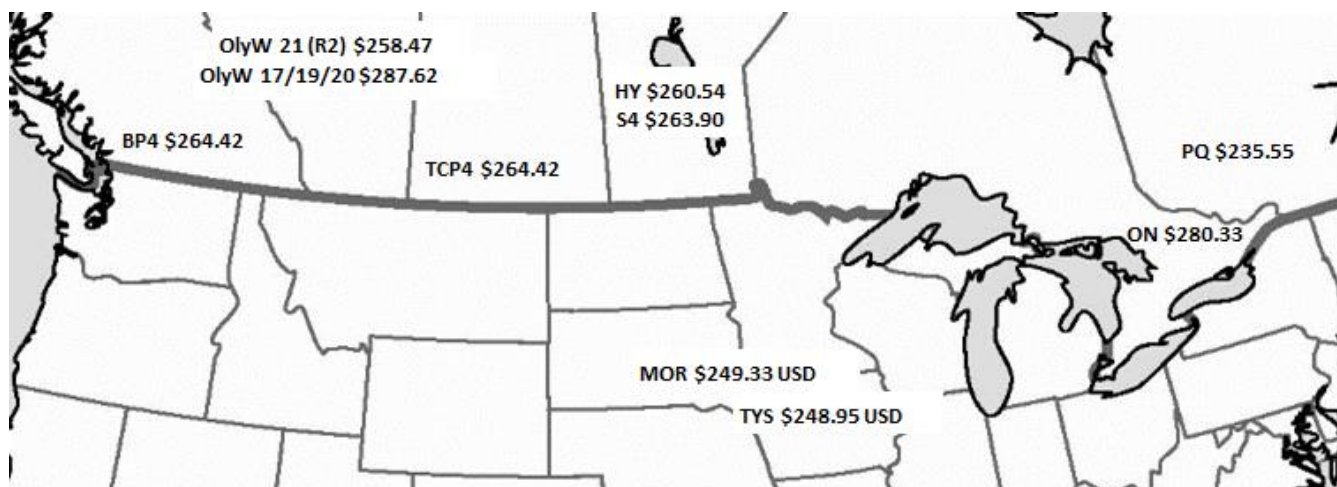
Regional Pricing, \$/hog								
Packer/Region	3 Year	Difference to OlyW21	2022 YTD	Difference to OlyW21	Last 13 weeks	Difference to OlyW21	Ending 10-Jun-22	Difference to OlyW21
OlyW 2021 (R2)**	\$210.44		\$239.63		\$251.80		\$258.47	
OlyW 17/19/20*	\$206.91	-\$3.53	\$257.62	\$17.99	\$276.73	\$24.94	\$287.62	\$29.15
ML Sig 4	\$205.48	-\$4.96	\$241.12	\$1.50	\$256.48	\$4.69	\$263.90	\$5.42
BP4/TCP4	\$206.94	-\$3.50	\$240.49	\$0.86	\$258.22	\$6.42	\$264.42	\$5.94
Hylife	\$210.01	-\$0.42	\$242.06	\$2.43	\$253.69	\$1.89	\$260.54	\$2.07
Ontario***	\$207.50	-\$2.94	\$250.94	\$11.31	\$268.44	\$16.65	\$280.33	\$21.86
Québec	\$217.51	\$7.07	\$234.26	-\$5.37	\$235.33	-\$16.47	\$235.55	-\$22.92
Tyson (USD)	\$156.42	-\$54.01	\$210.69	-\$28.94	\$234.45	-\$17.34	\$248.95	-\$9.52
John Morrell (USD)	\$149.71	-\$60.73	\$209.92	-\$29.71	\$231.26	-\$20.54	\$249.33	-\$9.15

*3 Year average uses actual OlyW'17, OlyW'19 and OlyW'20 for respective weeks. Starting Jan 2020 prices includes \$0.06 per kg proximity bonus

** 13 week average and the latest week uses the OlyW'21 including the floor price

*** Ontario pricing does not include any pork or cutout based formulas for market hogs

To Note: OlyW and BP4/TCP4 are nearly a full 1 week lag to Sig 4, Hylife, Ontario & Quebec



Weekly Hog Margins

Monitored hog margins generally strengthened on the week, supported by rising hog values despite a moderate feed cost increase. Canadian farrow-to-finish feed costs were up \$0.50/hog, while those in the monitored US region climbed \$0.75/hog from a week earlier.

Hog margins out the OlyW 20 improved \$1.85 to \$54/hog profits on the week, followed by those out of Ontario which strengthened \$4.60 to \$47/hog profits. Hog margins out of the ML Sig 4 improved \$1.75 to \$33.85/hog profits and Hylife margins edged \$0.85 higher to \$30.50/hog profits, while OlyW 21 margins weakened \$0.30 to \$24.85/hog profits. Hog margins out of Quebec edged \$0.20 higher to nearly \$2/hog profits. In the US, Tyson margins rose \$4.55 to \$72.75/hog profits while JM strengthened \$5.25 to \$74.90/hog profits from the previous week.

Regional MARGINS, \$/hog						
Packer/Region	10-Jun-22	Farrow to Finish			Total COP	Weekly Margin
	Hog Price	Feed*	Variable	Fixed		
OlyW 20/Alberta	\$287.62	\$170.14	\$41.45	\$22.05	\$233.64	\$53.98
OlyW 21 (R2)/Alberta	\$258.47	\$170.14	\$41.45	\$22.05	\$233.64	\$24.83
ML Sig 4/Manitoba	\$263.90	\$166.94	\$41.54	\$21.55	\$230.03	\$33.87
Hylife/Manitoba	\$260.54	\$166.94	\$41.54	\$21.55	\$230.03	\$30.51
Ontario	\$280.33	\$164.87	\$42.71	\$25.76	\$233.34	\$46.99
Québec	\$235.55	\$167.44	\$42.50	\$23.65	\$233.59	\$1.96
Tyson (USD)/Iowa	\$248.95	\$126.91	\$30.70	\$18.57	\$176.18	\$72.77
John Morrell (USD)/ND	\$249.33	\$125.18	\$30.70	\$18.57	\$174.45	\$74.88

* Feed cost variables- 285 lb hog, 1.57 F:G nursery, 2.89 F:G feeder-finish, \$20 GMD,

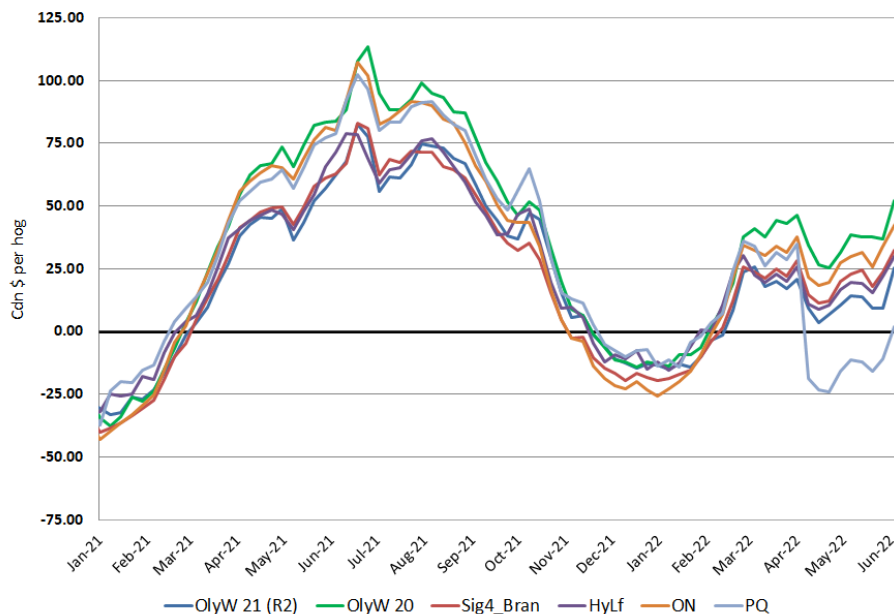
* Feed cost fixed expenses updated the week of April 8, 2022 onward

* Variable and Fixed Costs updated as of April 15, 2022

Tyson: \$72.77 USD x 1.294 = \$94.16 CAD

Morrell: \$74.88 USD x 1.294 = \$96.89 CAD

Canadian Margins 2021-2022



Disclaimer: Commodity Professionals Inc. presents this report as a snapshot of the market using current information available at the time of the report. These findings are for informational purposes only and should not be reproduced or transmitted by any means without permission. Commodity Professionals Inc. does not guarantee, and accepts no legal liability arising from or connected to, the accuracy, reliability, or completeness of any material contained in the publication.