

# Hog Supply at a Glance

Week Ending February 20 2021



## Hog Slaughter at Federally Inspected Packing Plants

Number of Head

	Week Ending		Chg	YTD Ending		Chg
	20-Feb-21	15-Feb-20		20-Feb-21	15-Feb-20	
West	148,669	165,989	↓ -10.4%	1,264,521	1,187,700	↑ 6.5%
East	237,385	257,375	↓ -7.8%	1,777,668	1,740,843	↑ 2.1%
<b>Canada</b>	<b>386,054</b>	<b>423,364</b>	<b>↓ -8.8%</b>	<b>3,042,189</b>	<b>2,928,543</b>	<b>↑ 3.9%</b>
<b>Carcass weight (kg) * [1]</b>	<b>111.18</b>	<b>105.23</b>	<b>↑ 5.7%</b>	<b>111.21</b>	<b>106.03</b>	<b>↑ 4.9%</b>
<b>Pork Production (t)</b>	<b>42,922</b>	<b>44,549</b>	<b>↓ -3.7%</b>	<b>338,323</b>	<b>310,504</b>	<b>↑ 9.0%</b>

[1] Week ending February 20 2021

YTD = Jan average (kg) \*weights for 2020 are based off of a monthly average

Source: Canadian Food Inspection Agency (CFIA)

Note: West (BC, AB, SK, MB) and East (ON, QC, NB, NS, PE)

## Hog Prices [1]

CDN\$/100kg

	Week Ending		Chg	YTD Avg Price Ending		Chg
	20-Feb-21	15-Feb-20		20-Feb-21	15-Feb-20	
British Columbia	172.07	152.50	↑ 12.8%	157.84	151.65	↑ 4.1%
Alberta	167.00	133.70	↑ 24.9%	152.27	140.66	↑ 8.3%
Saskatchewan	173.87	142.92	↑ 21.7%	158.35	146.70	↑ 7.9%
Manitoba*	187.22	156.04	↑ 20.0%	172.49	157.72	↑ 9.4%
Ontario [1]	206.52	174.70	↑ 18.2%	192.03	185.09	↑ 3.7%
Quebec **	188.55	145.09	↑ 30.0%	173.83	160.15	↑ 8.5%
New Brunswick	175.46	136.68	↑ 28.4%	156.95	141.50	↑ 10.9%
Nova Scotia	174.76	153.99	↑ 13.5%	160.65	150.83	↑ 6.5%
Prince Edward Island	173.64	147.91	↑ 17.4%	159.22	148.41	↑ 7.3%

[1] Provincial prices reflect Index 100, except Ontario which is total value FOB yard price.

\*Estimate for 2020

\*\*Price formula for Quebec includes reference to USDA wholesale pork cutout price

Source: Provincial Pork Associations, Provincial Governments and the USDA

## Canadian Hog Slaughter by Province of Origin (federal & provincial slaughter)

Number of Head

	Week Ending		Chg	YTD Ending		Chg
	20-Feb-21	15-Feb-20		20-Feb-21	15-Feb-20	
British Columbia	2,968	4,043	↓ -26.6%	24,678	28,194	↓ -12.5%
Alberta	27,937	45,288	↓ -38.3%	317,915	321,251	↓ -1.0%
Saskatchewan	20,709	32,825	↓ -36.9%	220,879	230,079	↓ -4.0%
Manitoba	97,843	88,459	↑ 10.6%	704,527	635,526	↑ 10.9%
Ontario	95,296	120,415	↓ -20.9%	798,925	828,916	↓ -3.6%
Quebec	153,176	146,640	↑ 4.5%	1,067,299	993,123	↑ 7.5%
New Brunswick	550	289	↑ 90.3%	3,792	2,960	↑ 28.1%
Nova Scotia	165	116	↑ 42.2%	1,525	1,241	↑ 22.9%
Prince Edward Island	1,319	1,183	↑ 11.5%	9,690	8,121	↑ 19.3%
<b>Canada</b>	<b>399,963</b>	<b>439,258</b>	<b>↓ -8.9%</b>	<b>3,149,230</b>	<b>3,049,411</b>	<b>↑ 3.3%</b>

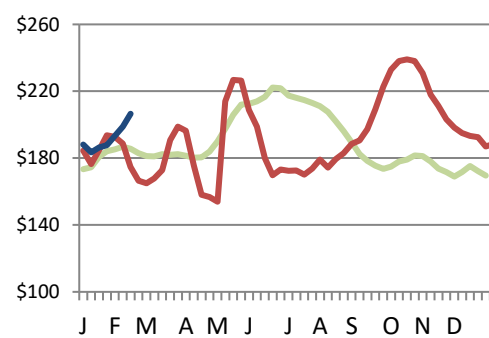
## Estimated Sow/Boar Slaughter (includes federal & provincial slaughter)

West	1,189	1,115	↑ 6.6%	8,907	7,535	↑ 18.2%
East	1,269	1,235	↑ 2.8%	9,230	8,593	↑ 7.4%
<b>Canada</b>	<b>2,458</b>	<b>2,350</b>	<b>↑ 4.6%</b>	<b>18,137</b>	<b>16,128</b>	<b>↑ 12.5%</b>

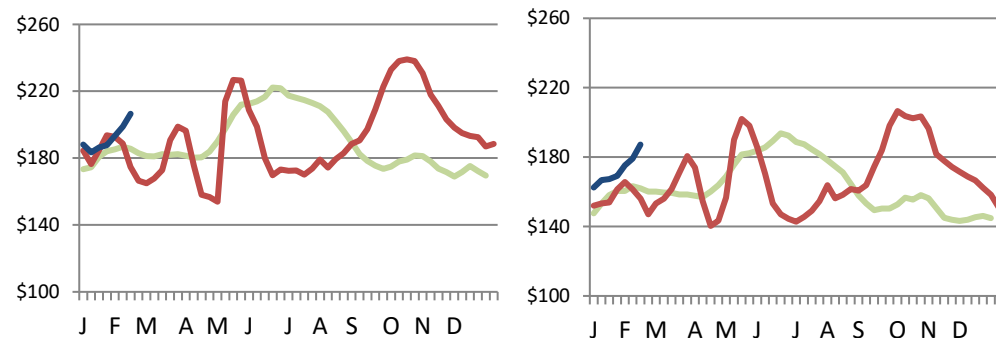
Source: CFIA and Provincial Governments

## Ontario Hog Price - Dressed Weight

(Total Value FOB yard)



## Manitoba Hog Price - Index 100



— AVERAGE (2015-2019) — 2020 — 2021

Weekly Weighted Avg. Price (CDN\$/100kg)

Source: Provincial Pork Associations, Provincial Governments and the USDA

# Exports

## Canadian Pork Exports

Metric tonnes

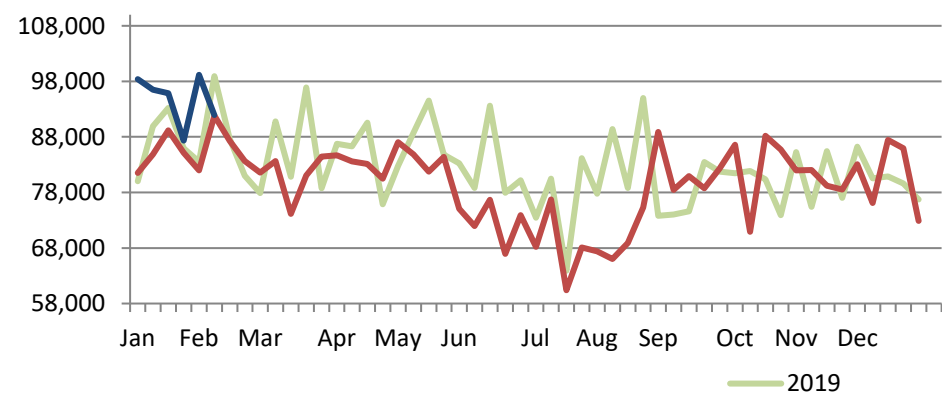
	Monthly		Chg	YTD Ending		Chg
	Dec-20	Dec-19		Dec-20	Dec-19	
China	33,873	30,214	-	609,655	255,507	-
United States	27,531	28,117	↓ -2.1%	311,203	319,845	↓ -2.7%
Japan	21,690	20,321	↑ 6.7%	255,226	261,945	↓ -2.6%
Mexico	13,881	10,776	↑ 28.8%	107,286	153,224	↓ -30.0%
Philippines	12,280	4,335	↑ 183.3%	48,050	53,325	↓ -9.9%
South Korea	4,974	3,402	↑ 46.2%	38,694	47,286	↓ -18.2%
Viet Nam	3,064	3,779	↓ -18.9%	25,898	11,931	-
Taiwan	2,745	3,818	↓ -28.1%	20,717	48,506	↓ -57.3%
Hong Kong	814	2,109	↓ -61.4%	9,583	15,704	↓ -39.0%
Australia	877	1,176	↓ -25.4%	5,239	11,429	↓ -54.2%
EU - 27	4	314	↓ -98.8%	600	2,121	↓ -71.7%
Other	7,767	7,809	↓ -0.5%	55,965	81,501	↓ -31.3%
<b>Total</b>	<b>129,500</b>	<b>116,171</b>	<b>↑ 11.5%</b>	<b>1,488,116</b>	<b>1,262,326</b>	<b>↑ 17.9%</b>

Domestic exports only (excludes re-exports)

Source: Statistics Canada

## Canadian Feeder Hog Exports to the US

	Week Ending		Chg	YTD Ending		Chg
	13-Feb-21	8-Feb-20		13-Feb-21	8-Feb-20	
Number of Head	91,965	80,766	↑ 13.9%	569,268	495,461	↑ 14.9%



Source: USDA - APHIS

## Canadian Pork Exports

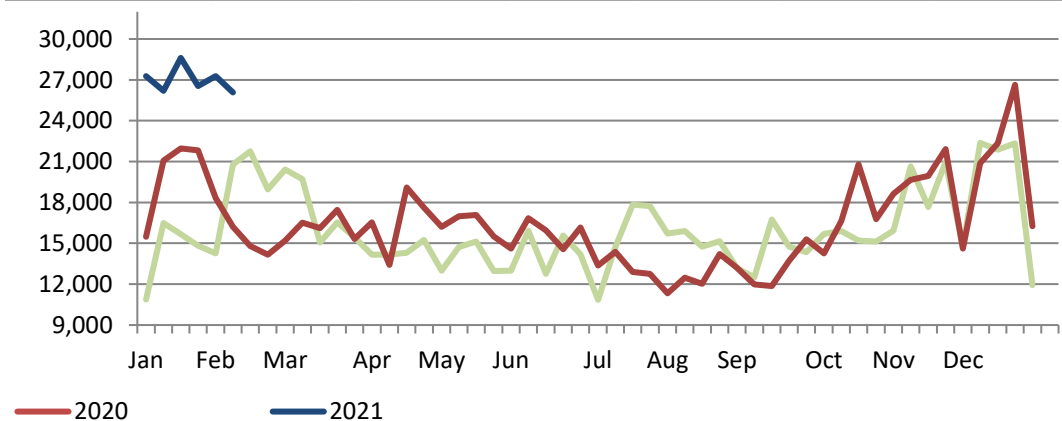
CDN\$ ('000)

	Monthly		Chg	YTD Ending		Chg
	Dec-20	Dec-19		Dec-20	Dec-19	
China	94,927	101,983	-	1,644,759	609,147	-
United States	102,179	107,008	↓ -4.5%	1,263,260	1,251,181	↑ 1.0%
Japan	120,896	110,000	↑ 9.9%	1,439,675	1,403,049	↑ 2.6%
Mexico	24,119	21,085	↑ 14.4%	178,051	281,872	↓ -36.8%
Philippines	26,798	9,505	↑ 181.9%	115,270	117,839	↓ -2.2%
South Korea	17,325	11,217	↑ 54.5%	149,430	170,564	↓ -12.4%
Viet Nam	6,574	8,416	↓ -21.9%	59,232	25,136	-
Taiwan	6,606	8,400	↓ -21.4%	53,333	108,868	↓ -51.0%
Hong Kong	2,398	3,265	↓ -26.5%	24,157	31,423	↓ -23.1%
Australia	2,784	4,083	↓ -31.8%	16,404	36,992	↓ -55.7%
EU - 27	22	1,049	↓ -97.9%	2,153	6,657	↓ -67.7%
Other	17,098	19,666	↓ -13.1%	146,978	204,912	↓ -28.3%
<b>Total</b>	<b>421,726</b>	<b>405,679</b>	<b>↑ 4.0%</b>	<b>5,092,701</b>	<b>4,247,639</b>	<b>↑ 19.9%</b>

Domestic exports only (excludes re-exports)

## Canadian Market Hogs/Sows/Boars Exports to the US

	Week Ending		Chg	YTD Ending		Chg
	13-Feb-21	8-Feb-20		13-Feb-21	8-Feb-20	
Number of Head	26,076	16,199	↑ 61.0%	161,984	114,889	↑ 41.0%



# Imports

## Canadian Pork Imports

Metric tonnes

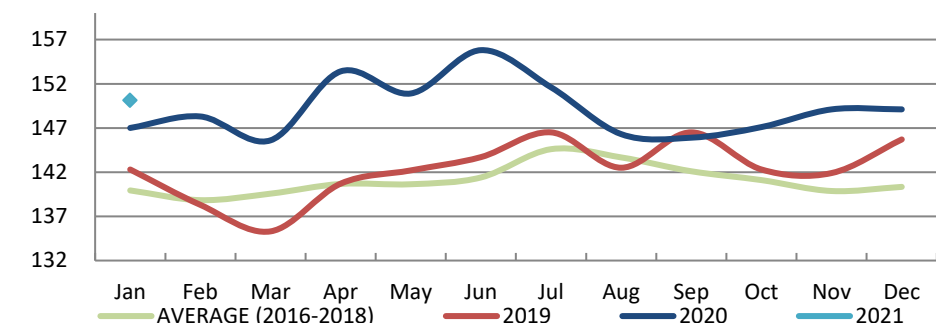
	Week Ending		Chg	YTD Ending		Chg
	20-Feb-21	15-Feb-20		20-Feb-21	15-Feb-20	
<b>Fresh and Frozen Pork</b>						
United States	3,146	3,110	↑ 1.2%	21,072	21,514	↓ -2.1%
Germany	25	99	↓ -75.1%	1,371	661	↑ 107.5%
Denmark	0	51	-	455	382	↑ 19.2%
Spain	0	49	-	370	109	-
Mexico	21	36	↓ -41.5%	294	186	↑ 58.5%
Other	0	137	-	897	849	↑ 5.6%
<b>Total Fresh and Frozen</b>	<b>3,192</b>	<b>3,482</b>	<b>↓ -8.3%</b>	<b>24,458</b>	<b>23,701</b>	<b>↑ 3.2%</b>

Source: CFIA

## Market Indicators

### Consumer Price Index - Fresh or Frozen Pork

2002 Base, Monthly



Source: Statistics Canada

### Estimated Average Value of the Pork Carcass Cutout on the US Wholesale Market

(US\$/cwt)

	Week Ending		Chg	YTD Avg Value Ending		Chg
	20-Feb-21	15-Feb-20		20-Feb-21	15-Feb-20	
Carcass	90.49	62.76	↑ 44.2%	83.06	71.00	↑ 17.0%
Loin	79.02	64.58	↑ 22.4%	77.13	67.68	↑ 14.0%
Butt	77.48	69.77	↑ 11.1%	72.83	82.28	↓ -11.5%
Pic	58.04	46.63	↑ 24.5%	52.03	52.74	↓ -1.3%
Rib	148.01	138.26	↑ 7.1%	149.16	141.68	↑ 5.3%
Ham	79.13	54.15	↑ 46.1%	73.46	63.46	↑ 15.8%
Belly	157.84	72.64	↑ 117.3%	132.33	91.07	↑ 45.3%

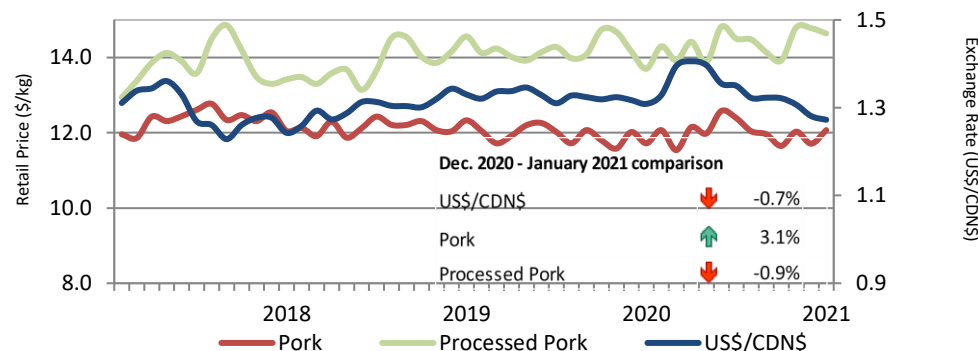
Source: USDA-APHIS: National Weekly Pork Report

	Week Ending		Chg	YTD Ending		Chg
	20-Feb-21	15-Feb-20		20-Feb-21	15-Feb-20	
<b>Pork Processed</b>						
United States	1,148	1,105	↑ 3.9%	8,537	7,594	↑ 12.4%
Italy	3	85	↓ -96.0%	303	413	↓ -26.8%
Denmark	0	0	-	157	51	-
Other	0	20	-	255	244	↑ 4.5%
<b>Total Processed</b>	<b>1,151</b>	<b>1,210</b>	<b>↓ -4.8%</b>	<b>9,253</b>	<b>8,303</b>	<b>↑ 11.4%</b>
<b>Total Pork Fat</b>	<b>6</b>	<b>0</b>	<b>-</b>	<b>70</b>	<b>34</b>	<b>↑ 102.4%</b>
<b>Total</b>	<b>4,349</b>	<b>4,692</b>	<b>↓ -7.3%</b>	<b>33,781</b>	<b>32,038</b>	<b>↑ 5.4%</b>

Source: CFIA

### Exchange Rate and Retail Prices for Pork Products

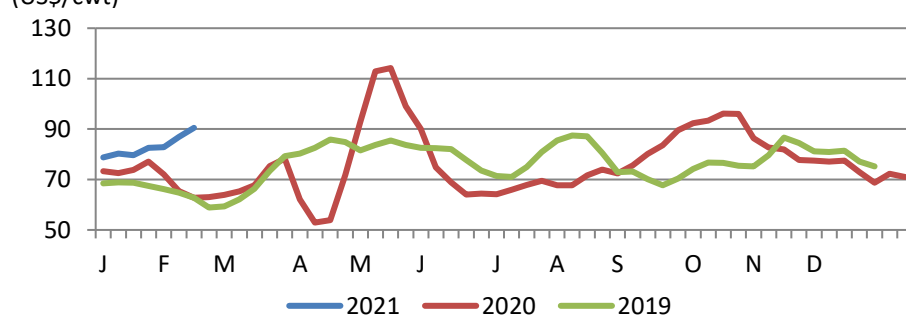
\$US/\$CDN



Source: Statistics Canada and Bank of Canada

### Estimated Carcass Value on the US Wholesale Market

(US\$/cwt)



\* Calculations based on a 205 lb Pork Carcass. 53-54% lean, 0.65"-0.80" BF last rib

## United States Hog Slaughter and Pork Production

	Week Ending		Chg	YTD Ending		Chg
	20-Feb-21	22-Feb-20		20-Feb-21	22-Feb-20	
Slaughter ('000 head)	2,438	2,611	↓ -6.6%	18,943	19,866	↓ -4.6%
Pork Production (mil. lbs)	534	561	↓ -4.9%	4,178	4,287	↓ -2.5%
Avg Dressed Weight (lbs)	219	215	↑ 1.9%			

Source: United State Department of Agriculture (USDA)

## United States Hog Market Prices - By Region

Weighted weekly average carcass (US\$/cwt)

	Week Ending		Chg	YTD Ending		Chg
	20-Feb-21	15-Feb-20		20-Feb-21	15-Feb-20	
US - National	76.87	57.85	↑ 32.9%	69.57	61.02	↑ 14.0%
Eastern Cornbelt	75.75	58.71	↑ 29.0%	69.00	61.60	↑ 12.0%
Iowa Minnesota	76.54	57.84	↑ 32.3%	69.33	61.00	↑ 13.7%
Western Cornbelt	76.70	57.56	↑ 33.3%	69.28	60.91	↑ 13.7%
<b>Total composite weighted average prices*</b>						
Early Weaned Pigs	58.23	44.89	↑ 29.7%	54.17	52.50	↑ 3.2%
40 lb Feeder Pigs	81.05	61.14	↑ 32.6%	72.27	64.03	↑ 12.9%

\*Includes Formula and Cash

Source: USDA: National Direct

## United States Pork Imports

Carcass weight - tonnes

	Monthly		Chg	YTD Ending		Chg
	Dec-20	Dec-19		Dec-20	Dec-19	
Canada	21,923	21,571	↑ 1.6%	259,399	261,350	↓ -0.7%
Poland	2,692	3,321	↓ -18.9%	35,191	60,821	↓ -42.1%
Mexico	3,799	1,717	-	33,011	21,400	↑ 54.3%
Denmark	2,127	1,594	↑ 33.4%	28,323	25,921	↑ 9.3%
Italy	1,344	1,133	↑ 18.6%	13,278	13,376	↓ -0.7%
Other	3,338	2,403	↑ 38.9%	41,024	45,735	↓ -10.3%
<b>Total</b>	<b>35,223</b>	<b>31,740</b>	<b>↑ 11.0%</b>	<b>410,225</b>	<b>428,604</b>	<b>↓ -4.3%</b>

Source: USDA, Economic Research Service

## United States Pork Exports

Carcass weight - tonnes

	Monthly		Chg	YTD Ending		Chg
	Dec-20	Dec-19		Dec-20	Dec-19	
China	69,107	100,702	↓ -31.4%	940,840	459,361	-
Mexico	76,752	67,882	↑ 13.1%	710,574	707,793	↑ 0.4%
Japan	46,535	41,257	↑ 12.8%	544,855	521,079	↑ 4.6%
Canada	19,635	20,102	↓ -2.3%	262,948	251,675	↑ 4.5%
South Korea	20,011	23,137	↓ -13.5%	220,385	283,329	↓ -22.2%
Other	56,501	55,747	↑ 1.4%	623,627	643,893	↓ -3.1%
<b>Total</b>	<b>288,541</b>	<b>308,827</b>	<b>↓ -6.6%</b>	<b>3,303,228</b>	<b>2,867,129</b>	<b>↑ 15.2%</b>

Source: USDA, Economic Research Service

## For more information, please contact

Francois Bédard  
Sector Specialist - Pork  
Animal Industry Division  
Francois.Bedard@CANADA.CA  
Tel.: 613-773-2027  
www.agr.gc.ca/redmeat