

CWSHIN News #20

CWSHIN serves western swine producers, swine herd practitioners and governments to improve swine health, production and the economic prosperity of the sector.

Our vision is to have a surveillance system imbedded in an intelligence network that monitors diseases both present and absent.

For diseases present in western Canada (domestic diseases) to:

- Detect emerging swine health issues early
- Integrate information for response to regional health issues
- Provide information about endemic diseases (benchmark)

For diseases absent in western Canada to:

- Detect emerging swine health issues early
- Provide evidence of the absence of disease to support trade

<https://www.cwshin.ca/>

To swine practitioners and producer engaged in CWSHIN

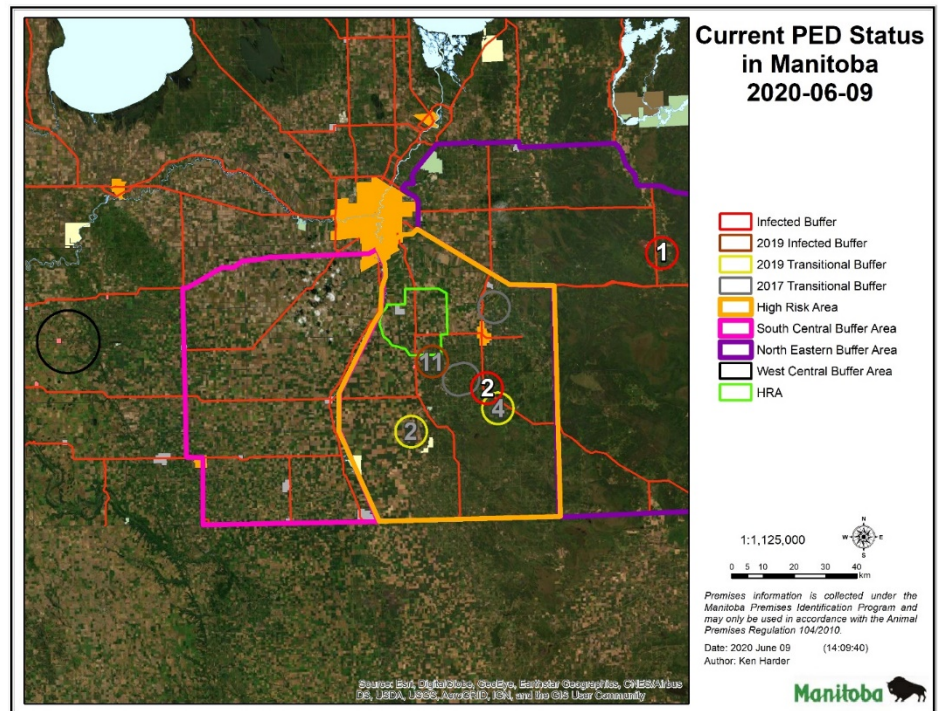
The purpose of this CWSHIN News is to inform swine practitioners and producers engaged in CWSHIN about:

2020 Porcine Epidemic Diarrhea (PED) outbreak (9 June 2020)

In Manitoba two cases of PED has been confirmed.

On June 9, 2020 one swine premises in the North Eastern Buffer Area, and one swine premises in the High-Risk Area were confirmed to have PED.

Both infected premises were nurseries that showed clinical signs and subsequently tested positive. A contact review for both premises



PED

Two new cases of PED confirmed in MB

2019 PED outbreak clean-up still ongoing

PRECAUTIONS AND PRACTICAL TIPS

New precautions

Additional precautions should be taken for movements to and contacts with all premises within 5km of IP02 (High-Risk area).

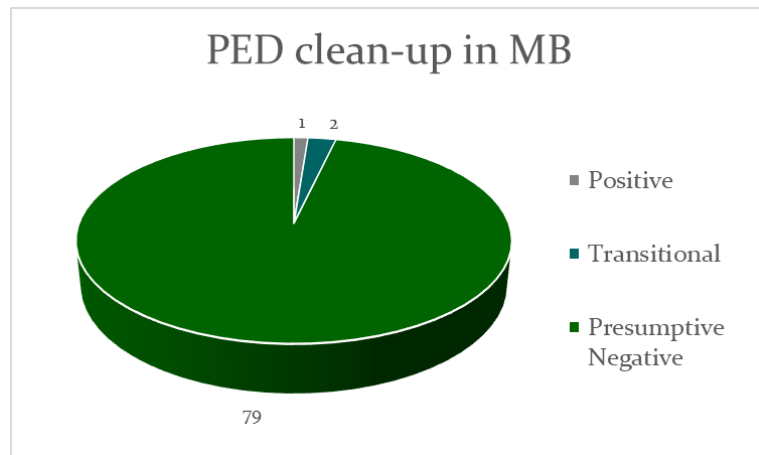
Continued

Assembly points and abattoirs and connected transport continue to be a risk for PED in Manitoba.

Infected manure is a possible route of disease introduction therefore, take extra precautions when spreading possibly infected manure.

Update on the 2019 PED outbreak clean-up

The 2019 PED outbreak started 27 February 2019 and the clean-up is still ongoing with 2 transitional and 1 positive premises remaining – all finishers. All other premises in the 2019 PED outbreak have achieved presumptive negative status.



PED precautions

The CVO/AHW Branch (MB) will support surveillance for premises within 5km of IP 01.

Based on location within the High-Risk Area, the CVO/AHW Branch has recommended that additional precautions be taken for movements to and contacts with all premises within 5km of IP02 (see map).

Assembly points and abattoirs (high-traffic and high-risk facilities) and connected transport continue to be a risk for PED in Manitoba.

Producers are reminded that infected manure is a possible route of disease introduction and to take extra precautions when spreading possibly infected manure.