

# David and Joan Lynch School Of Engineering Safety and Risk Management

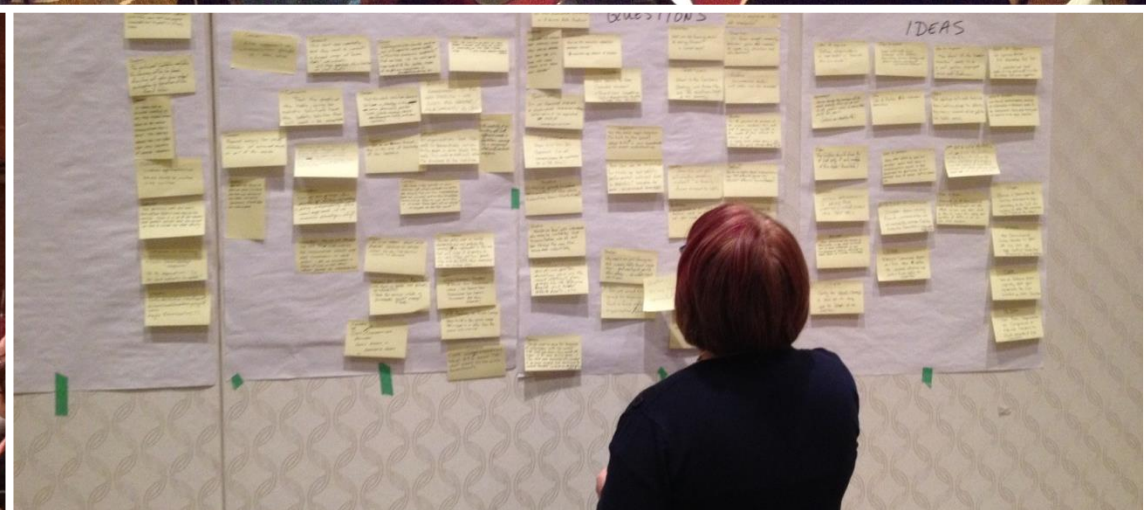


## The AgCoalition Journey....





# Alberta Agriculture Farm & Ranch Safety Coalition





# Alberta Agriculture Farm & Ranch Safety Coalition

Egg Farmers of Alberta

Alberta Cattle Feeders

Alberta Barley Commission

Alberta Chicken Producers

Alberta Canola Producers Commission

Alberta Turkey Producers

Alberta Wheat Commission

Alberta Beekeepers Commission

Alberta Milk

Alberta Hatching Egg Producers

Alberta Grazing Leaseholders Association

Alfalfa Seed Commission (Alberta)

Alberta Pulse Growers Commission

Alberta Vegetable Growers (Processing)

Western Canadian Wheat Growers Association

Alberta Elk Commission

Alberta Seed Growers Association

Alberta Vegetable Growers (Processing)

Feeders Association

Forage Network

Hutterite Standing Committee

Alberta Pork

Alberta Beef Producers

Landscape Alberta

Potato Growers of Alberta

Bison Producers of Alberta

Western Stock Growers' Association

Alberta Farm Fresh Producers Association

Alberta Greenhouse Growers Association

Western Barley Growers Association

What do you consider to be the riskiest on-farm activity?

Type **Slido.com** into your smart phone's internet browser address bar, then enter event code **#6697**.

Click the “Polls” tab to respond. RDSTW guests' responses will display in real-time.



# THE AGCOALITION



**GOA Policy and Strategy Interface**

## **Alberta Agriculture Farm & Ranch Safety Coalition**

### **Farm Safety Coalition Strategy Committee**

- Co-Chairs – Page Stuart & Kent Erickson
- Commission General Managers/Executive Directors comprising 3-4 crop and 3-4 livestock members
- Interim Executive Director– Gord Winkel

### **Communications and Administration Group**

Commission and  
Communications Staff

### **Technical Support Group (TSG)**

Staff and Industry Representatives Compile  
Reference Material to Inform Consultation

**Industry Representatives for  
GOA Consultation as Required**

### **Industry Leadership Advisory Committee (ILAC)**

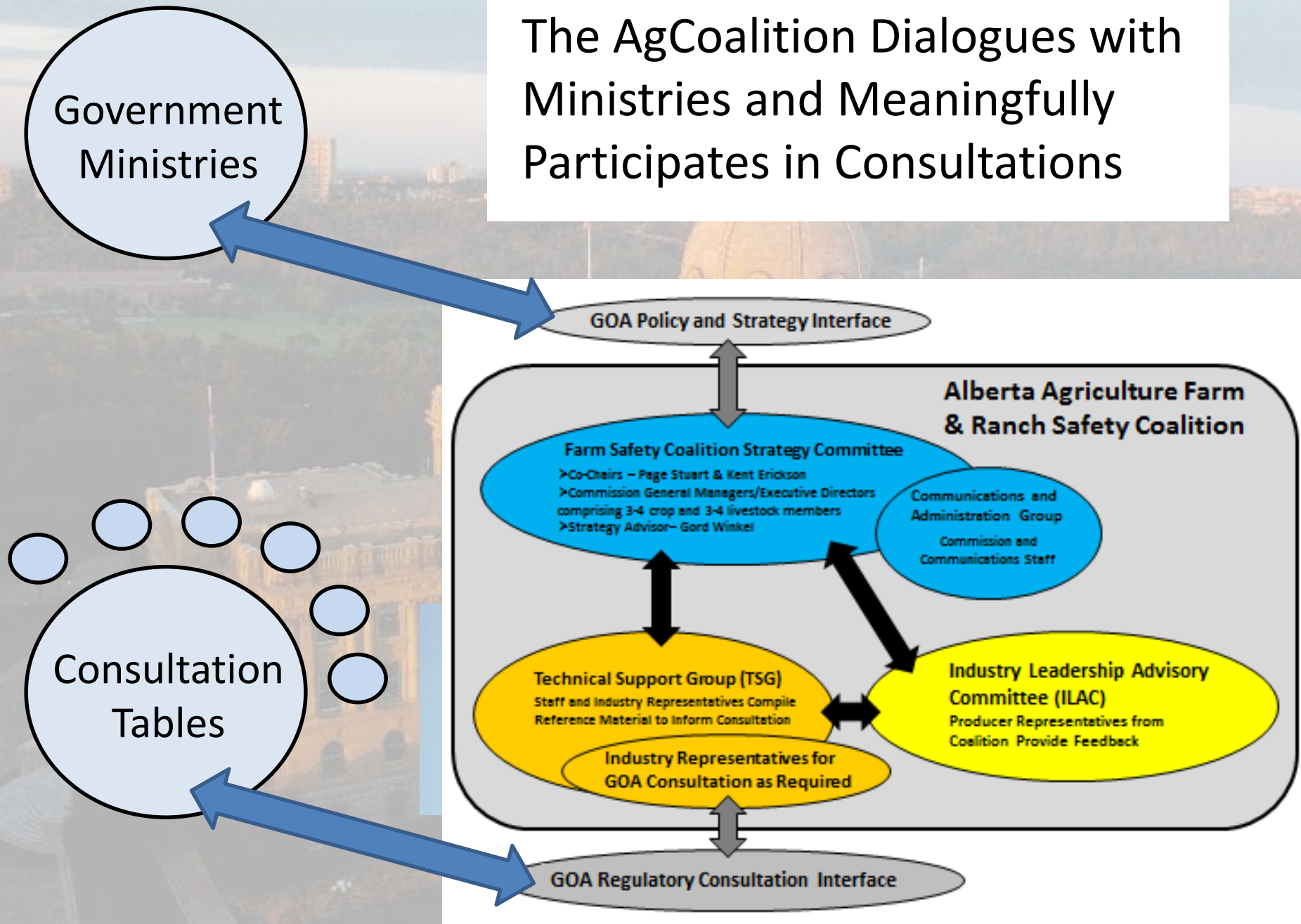
Producer Representatives from  
Coalition Provide Feedback

**GOA Regulatory Consultation Interface**





# The AgCoalition Dialogues with Ministries and Meaningfully Participates in Consultations





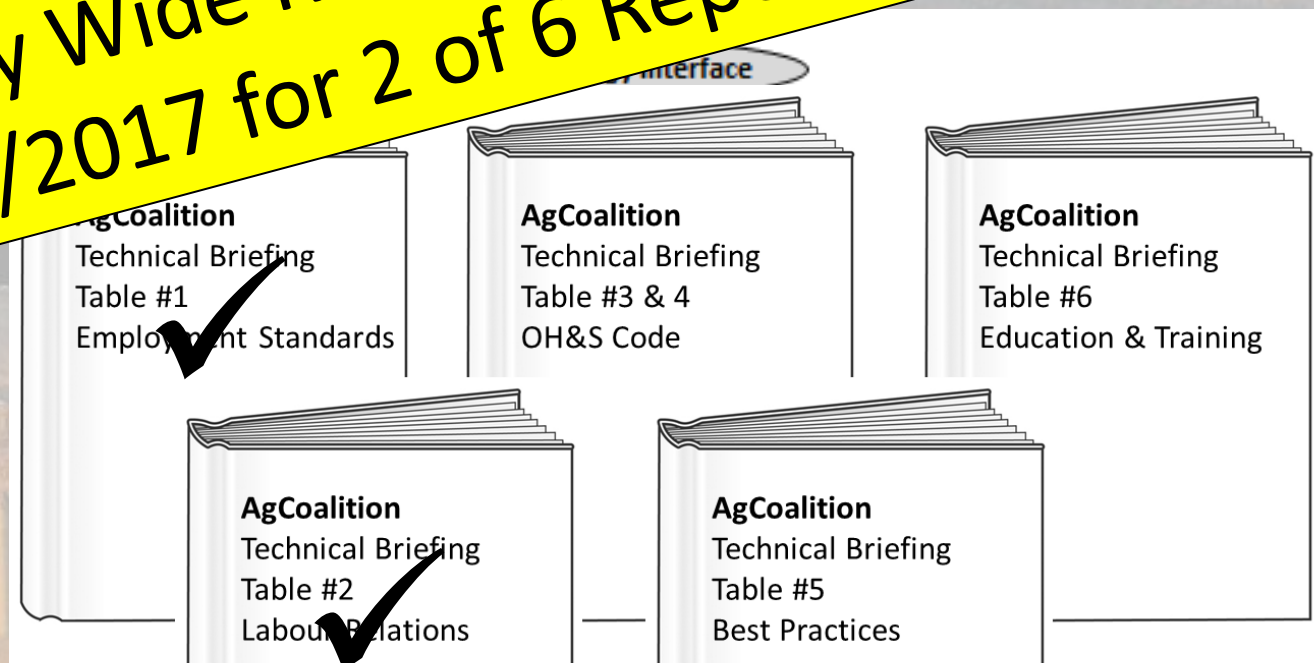
# 26 Consultation Table Sessions

Consultation Table	Meeting Dates
Education Table	June 15-16, 2016 July 18-19, 2016 October 24-25, 2016 December 1, 2016 February 27, 2017
OHS Codes 2	June 15-16, 2016 July 18-19, 2016 October 18-19, 2016 November 30, 2016
	June 14-15, 2016 July 27-18, 2016 August 29, 2016
OHS Codes 1	July 14-15, 2016 June 16-17, 2016 August 22-23, 2016 October 25-26, 2016 November 30-December 1, 2016 December 14-15, 2016 January 18, 2017
Employment Standards	June 13-14, 2016 August 9-10, 2016
Best Practices	June 15-16, 2016 August 4-5, 2016 December 14, 2016





**Industry Wide Response Compiled in  
March/2017 for 2 of 6 Reports Released**



**Bill 17: The Fair and Family-friendly  
Workplaces Act**



## 28 Government and AgCoalition Interface Sessions

### GOA Policy and Strategy Interface

**February-December, 2016:** Government

**August 31<sup>st</sup>, 2016:** Government Staff

for Carlier and his Chief of

Stuart, Kent Erickson and Gord  
and requested that the Coalition be given  
consultations and provide feedback on draft regulations

**February 28<sup>th</sup>, 2016:** The Deputy Ministers of both Agriculture & Forestry and Labour, Yee and Parr respectively, requested a meeting with the Coalition's leadership. Page Stuart, Kent Erickson and Gord Winkel met to discuss how the Govt and the Coalition can work more collaboratively and offered their support for the formation of an industry led farm and ranch safety association.

**February 13<sup>th</sup>, 2017:** Conference call with Ministers Gray and Carlier to let the AgCoalition know about the next steps of the Enhanced Safety for Farm and Ranch Workers process, specifically the two completed technical working groups 1 and 2 (Employment Standards and Labour Relations).

**February 24<sup>th</sup>, 2017:** The Deputy Ministers of both Agriculture & Forestry and Labour, Yee and Parr respectively, requested a meeting with the Coalition's leadership. Page Stuart, and Gord Winkel met to review technical working group reports and feedback.



# Alberta Agriculture Farm & Ranch Safety Coalition

Government of Alberta participants clearly communicated their positive support for the

## **The AgCoalition a Solution Moving Forward**

AgCoalition on communication and engagement with the agricultural industry upon conclusion of the consultation table processes.



# Alberta Agriculture Farm & Ranch Safety Coalition

Government complemented the preliminary work of

## Industry Led Farm and Ranch Safety Association

of an industry led farm and ranch safety association

The formation of an industry led farm and ranch  
safe

## Government Positive and On Side

complimentary to existing Government processes.





# Agenda

7:30-8:30AM	Breakfast and Networking
8:30-9:00AM	Welcome and Room Logistics Opening Remarks-Deputy Minister of Agriculture/Forestry: Beverly Yee Opening Remarks-Deputy Minister of Labour: Jeff Papp
9:00-9:30AM	Review of AgCoalition Activities ILAC Sessions, Consultation Table Cultures
9:30-10:30AM	Moving Forward AgCoalition Sessions on February 28 and March 1, 2017 in Red Deer, Alberta to Explore Industry Led Safety Association
10:30-11:30AM	Building on Good Work, Synergies with Other atation
11:30-12:00PM	Industry Led Safety
12:00-1:00PM	Other Business
1:00-2:00PM	Additional dialogue/table work as required
2:00-2:30PM	Strategies for Effective Communication
2:30-3:00PM	Break
3:00-4:00PM	Government Consultation Table Reports and Associated Survey Management

First Name	Last Name	Email	Home Phone	Mobile Phone	Job Title	Company
Kelly	Chambers	kelly@seedalberta.ca	403-863-3658	403-325-0081	Executive Director	Alberta Seed Growers
Bryan	Walton	bwalton@cattlefeeders.ca			President and CEO	ACFA
Victoria	Russell	vrussell@albertawheat.com	403-219-7906	403-813-6956	Communications Specialist	Alberta Wheat Commission
Rich	Smith	richs@albertabeef.org	(403) 948-4436	(403) 710-9151	Executive Director	Alberta Beef Producers
Gord	Winkel	gord.winkel@ualberta.ca	7802933375	7802933375	Executive Director	AgCoalition/University of Alberta
Joel	Beatson	joelbeatson@gmail.com	5879868466	5879868466	Executive Director	Landscape Alberta
Ward	Toma	ward@albertacanola.com			GM	Alberta Canola
Ray	Nolan	zone1@ablamb.ca			Director	Alberta Lamb Producers
Shannon	Sereda	ssereda@albertabarley.com			Policy Manager	Alberta Barley
Roland	Cailliau	crcowz@gmail.com	(780) 524-4402	(780) 524-8676	Vice-Chair	Alberta Beef Producers
Melody	Gamer-Skiba	melody@ashg.ca	4032231110	4038941005	Executive Director	Alberta Sugar Beet Growers

## Attendance of 25 Producer Groups in 2 Sessions Held February 28 and March 1, 2017 in Red Deer

Tim	Van der Hoek	vanderhoekfarms@gmail.com				Pulse Growers of Alberta
Diana	O'Hara	vrussell@albertawheat.com				Alberta Elk Commission
Connie	Seutter	connie.seutter@gmail.com				Alberta Elk Commission
Page	Stuart	page@agcoalition.ca				AgCoalition
Kent	Erickson	kent@agcoalition.ca				AgCoalition
Greg	Sears	vrussell@albertawheat.com				Alberta Canola Producers Commission
Terry	Young	tjyoung@live.ca				Alberta Wheat Commission
Paul	Doef	paul@doefsgreenhouses.com				owner operator
Ward	Toma	ward@albertacanola.com				Alberta Canola
Greg	Sears	greg@albertacanola.com				Alberta Canola
Steve	Marshman	steve@albertacanola.com				Alberta Canola
John	Bland	bbj1@efirehose.net				Forage Network
Mike	DeJong	busybee@telus.net				Alberta Beekeepers Commission
Ronda	Reesor	rondakr8@gmail.com				Alberta Grazing Leaseholders Association
Larry	Sears	larrysears@gmail.com				Alberta Grazing Leaseholders Association
Nevin	Rosaasen	nrosaasen@pulse.ab.ca				Alberta Pulse Growers
Russ	Pickett	saddle@eidnet.org				Western Stock Growers' Association
James	Jenkins	jjranches2010@hotmail.com				Western Stock Growers' Association
Phil	Rowland	prowland@xplornet.com				Western Stock Growers' Association
Doug	Robertson	dougarob@gmail.com				Western Barley Growers Association
Terence	Hochstein	terence@albertapotatoes.ca		403-382-8382	Executive Director	Potato Growers of Alberta
Ed	Vandenberg	terence@albertapotatoes.ca		403-634-0355	Board Chairman	Potato Growers of Alberta
Albert	Ypma	terence@albertapotatoes.ca		403-505-3555	Board member	Potato Growers of Alberta
Doreen	Neilley	mapleroo3@gmail.com			Director	Bison Producers of Alberta

'Susan Gal - Egg Farmers of Alberta  
 'Cara Prout - Alberta Turkey Producers' 2017  
 Bob Smook <bob@ahep.ca>  
 Karen Kirkwood <KKirkwood@chicken.ab.ca>  
 Erna Ference <ference@gmail.com>  
 Jeff.Kamlah@albertaturkey.com



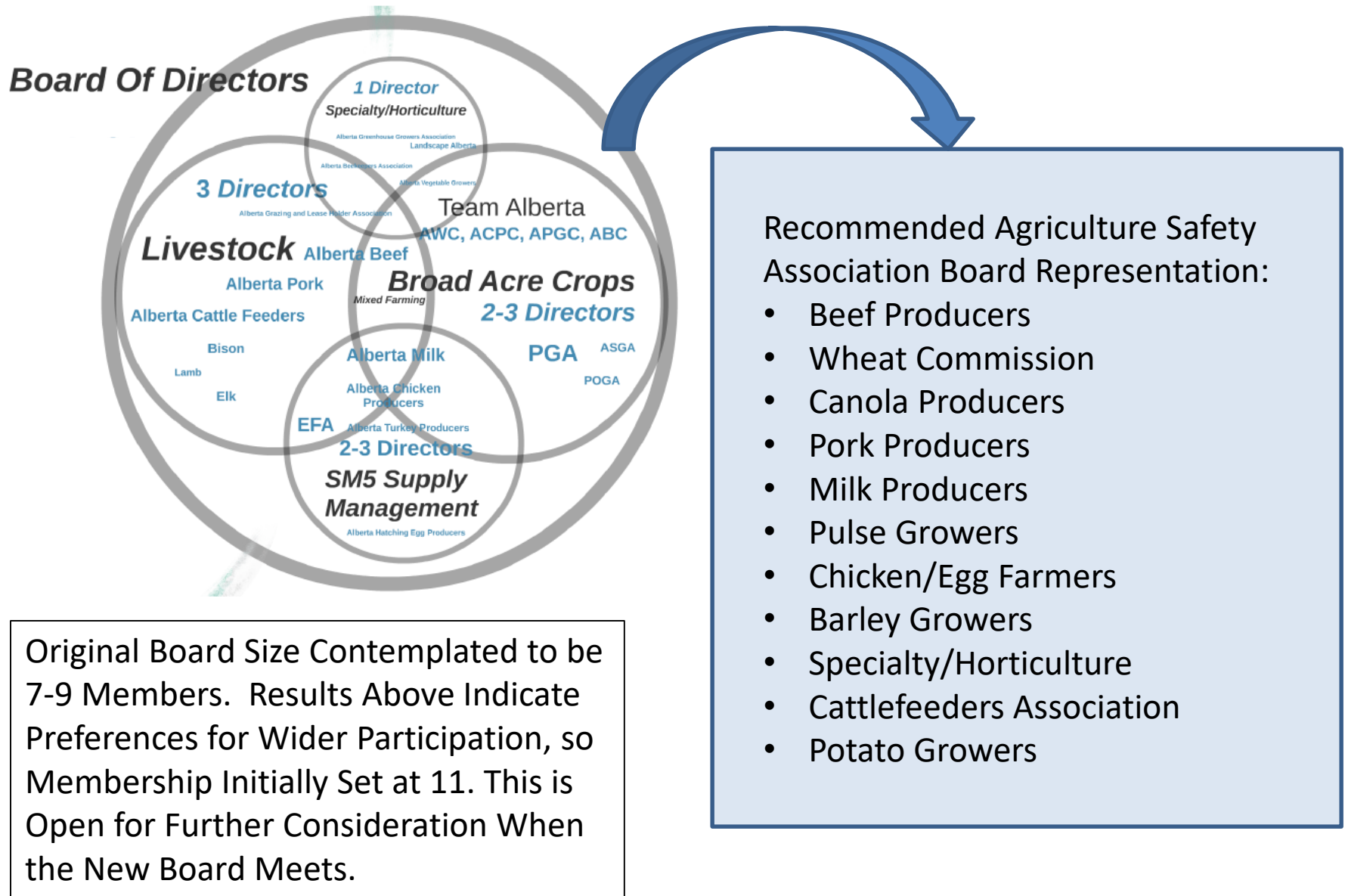
# Work Session Results on Potential Safety Association

7:30-8:30AM	Breakfast and Networking
8:30-9:00AM	<b>Welcome and Room Logistics</b> Opening Remarks-Deputy Minister of Agriculture/Forestry: Beverly Yee Opening Remarks-Deputy Minister of Labour: Jeff Papp
9:00-9:30AM	<b>Review of AgCoalition Activities</b> ILAC Sessions, Consultation Table, Building Safety Cultures
9:30-10:30AM	<b>Moving Forward with an Industry Led Safety Producer Membership</b>
10:30-11:00AM	
11:00-12:00PM	
12:00-1:00PM	
1:00-2:00PM	<b>Other Business</b> Additional dialogue/table work
2:00-2:30PM	<b>Strategies for Effective Communication</b>
2:30-3:00PM	<b>Break</b>
3:00-4:00PM	<b>Government Consultation Table</b> Management

**Industry Led Safety Association  
Unanimously Supported by  
Producer Membership**

**Producer Endorsement for  
Initiating Registration of  
Safety Association**

# Producer Feedback on Safety Association Governance



# Alberta Agriculture Forms Safety Association

Alberta Construction Safety Association

Alberta Hospitality Safety Association

Alberta Motor Transport Association

Alberta Municipal Health & Safety Association

Continuing Care Safety Association

Enform (Petroleum)

Manufacturer's Health & Safety Association

Industry Led Agriculture Farm and Ranch Safety Association





CORPORATE ACCESS NUMBER: 5020623954

Government  
of Alberta  
INCORPORATION  
CERTIFICATE  
OF  
INCORPORATION  
**AGSAFE  
ALBERTA**  
AG SAFE ALBERTA SOCIETY  
WAS INCORPORATED IN ALBERTA ON 2017/05/04.

**AgSafe**  
**ALBERTA**

Knowing the Numbers.....



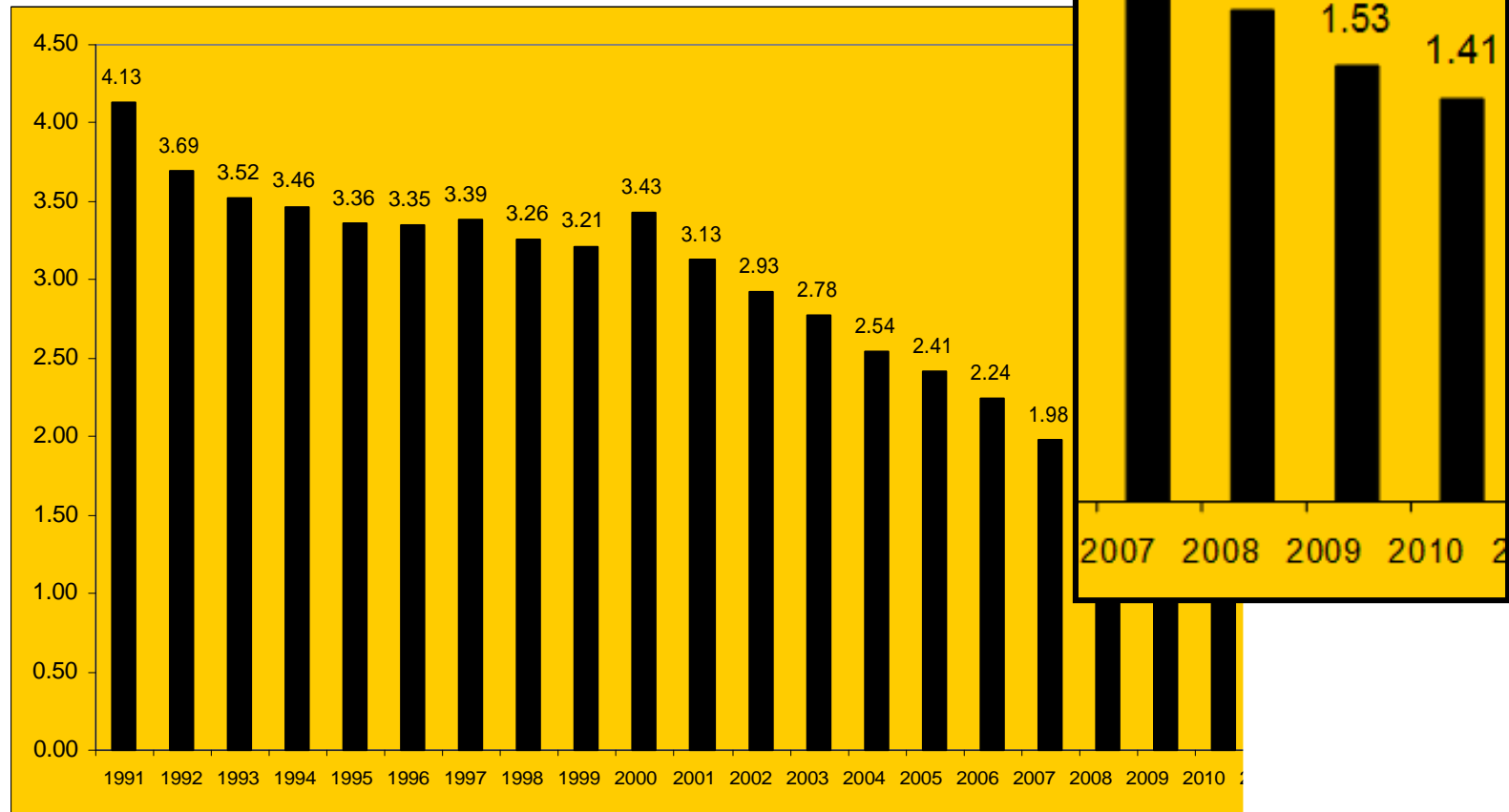




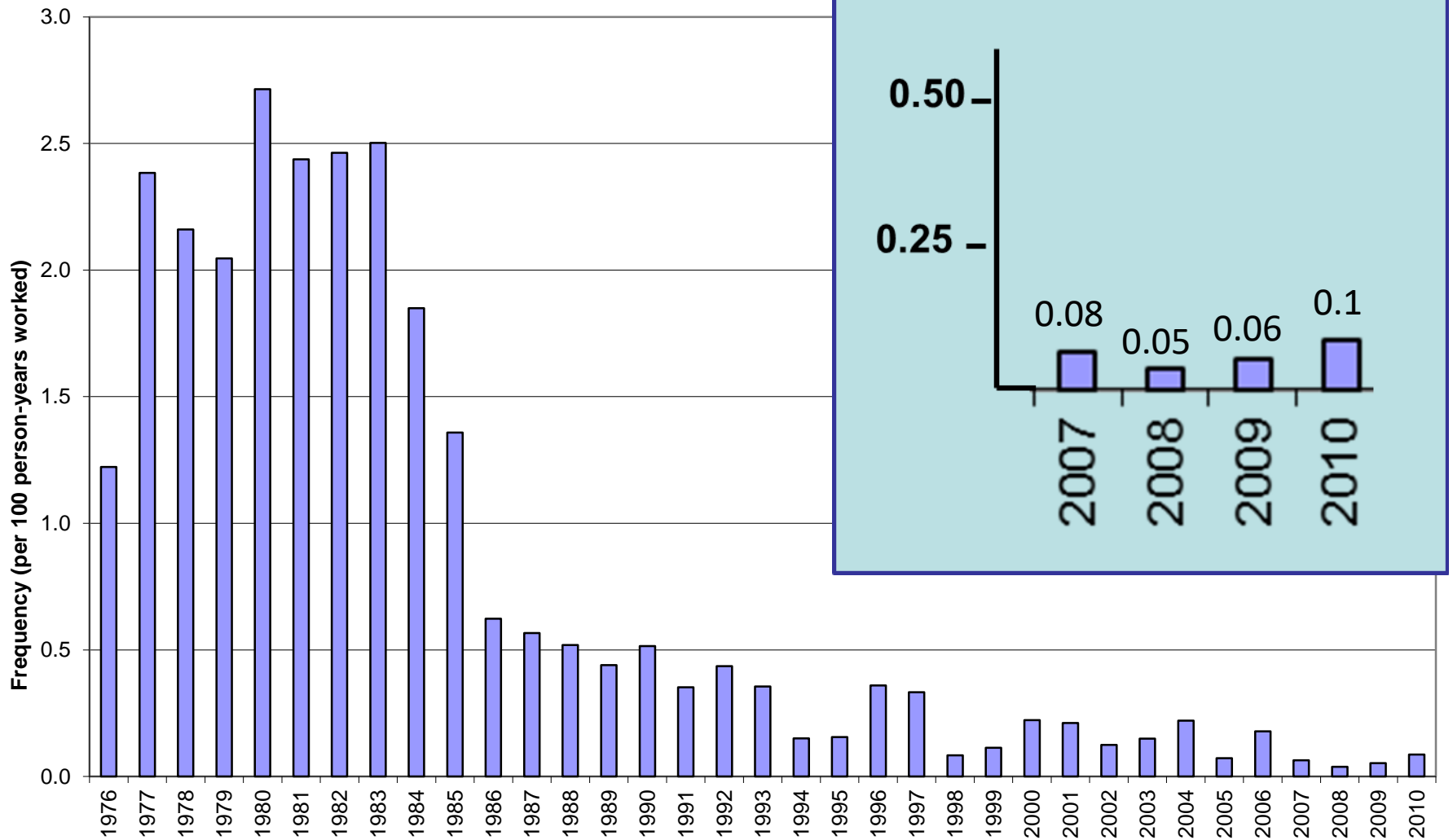


Chart 3.1

**Lost-Time Claim Rate\* per 100 Person-years worked  
1991-2011**



## Lost Time Injury Rate Large Industrial Operation









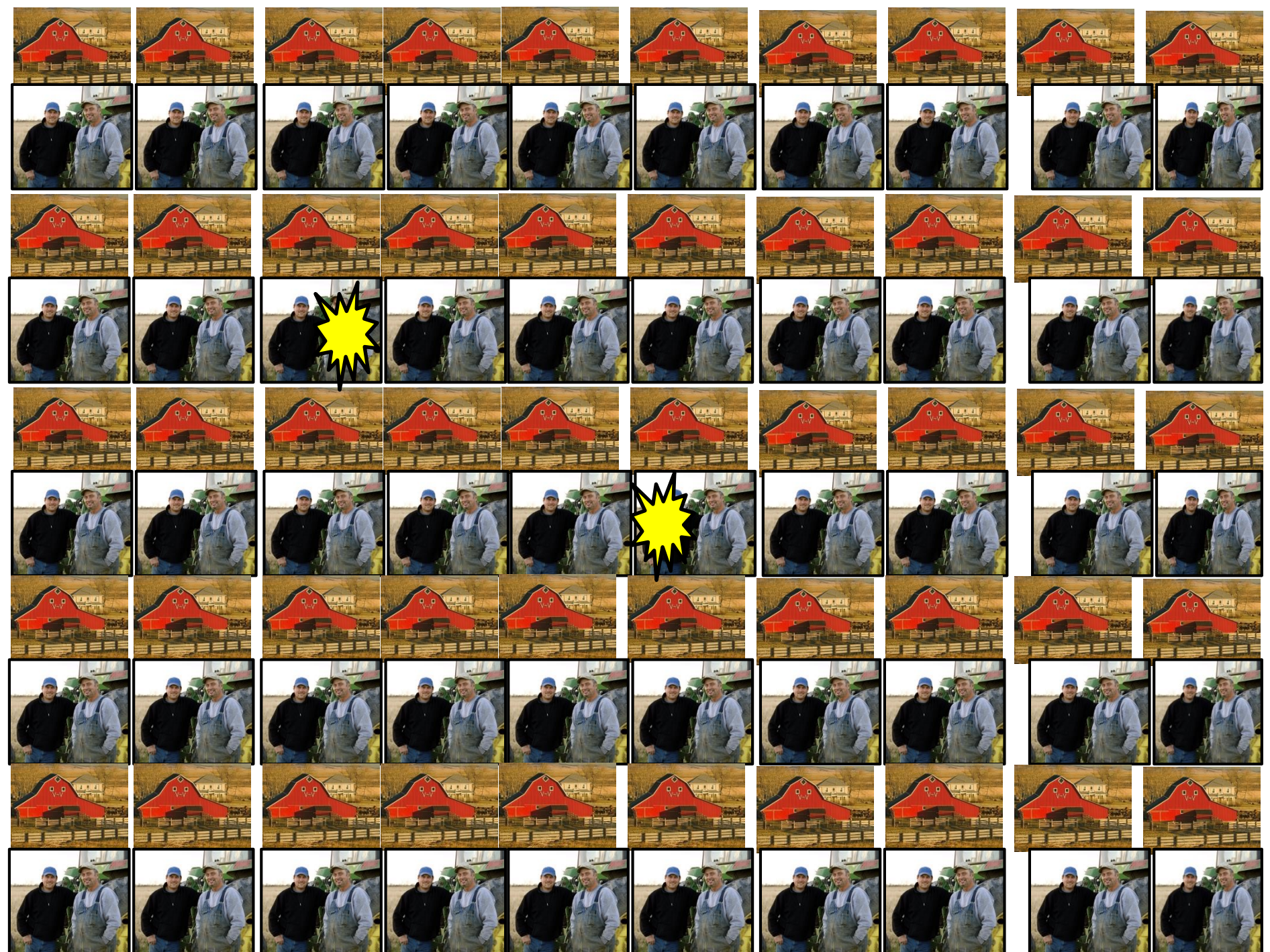












50 Farms/Ranches  
2 Workers on Each



That's 100 people  
Working in Agriculture

Let's Have These 100  
Folks Work for a Year



Unfortunately We Have 2  
Lost Time Injuries

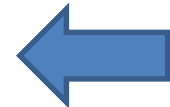


Then Our Annual Lost Time Injury  
Frequency Rate is 2 per 100 Folks  
Working a Year

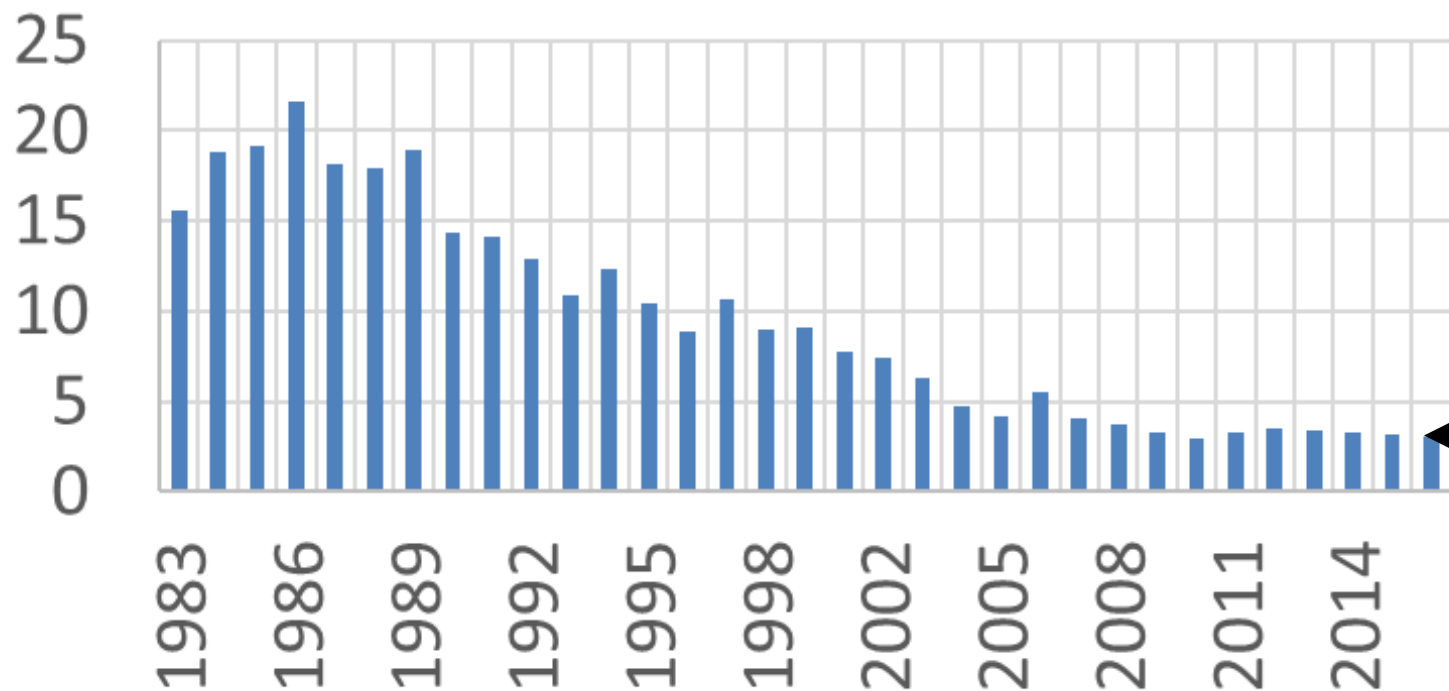


# Industry Safety Performance

	2016	2017
Sector	YTD	YTD
Agriculture	3.02	2.91
Mining, Oil & Gas	0.29	0.35
Manufacturing	1.00	1.05
Construction	1.06	1.08
Transportation	1.38	1.49
Trade	1.24	1.22
Mun. Govt., Educ., Health	1.73	2.21
Prov. Govt.	0.38	0.47
Bus., Pers., & Prof. Services	0.92	0.94
Total	1.16	1.25



## Lost Time Rate History



**Agriculture**

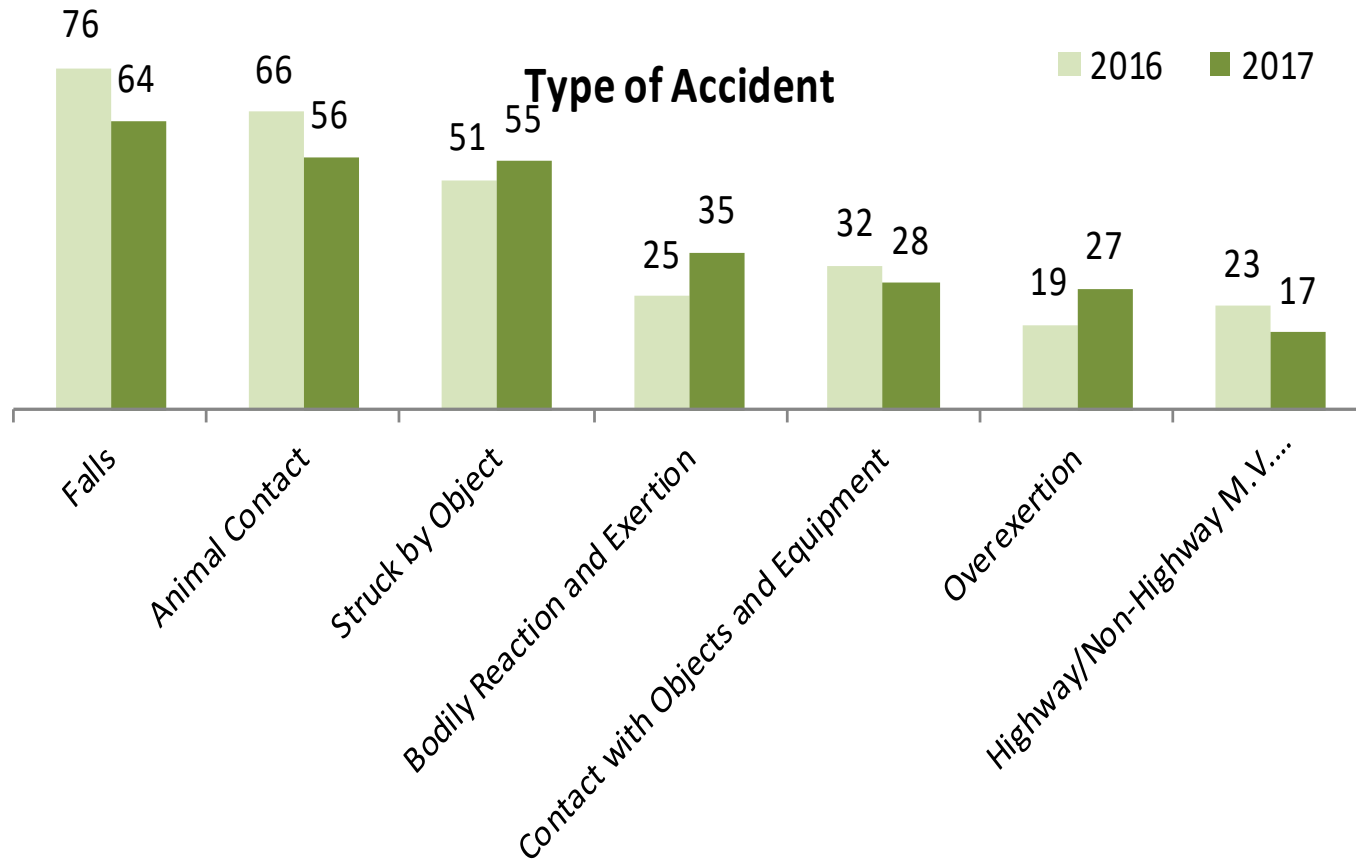
# Agriculture Safety Performance

<b>Farming Industry</b>	<b>Industry Title</b>	<b>2017</b>
<b>1200</b>	<b>BEEF PRODUCERS</b>	3.50
<b>1201</b>	<b>FEED LOTS</b>	4.52
<b>1202</b>	<b>LIVESTOCK AUCTIONS/STOCKYARDS</b>	6.35
<b>1203</b>	<b>DAIRY FARMS</b>	2.55
<b>1204</b>	<b>ELK/BISON PRODUCERS</b>	3.34
<b>1206</b>	<b>RIDING ACADEMIES/HORSE STABLES</b>	4.85
<b>1400</b>	<b>HOG PRODUCERS</b>	3.95
<b>1401</b>	<b>POULTRY/EGG PRODUCERS</b>	1.98
<b>1403</b>	<b>FISHING/FISH OR FUR FARMS</b>	1.68
<b>1404</b>	<b>APIARIES</b>	1.98
<b>1600</b>	<b>HAY/GRAIN/CROP FARMING</b>	1.46
<b>1601</b>	<b>HARVESTING/BALING - CUSTOM</b>	2.14
<b>1602</b>	<b>FORAGE &amp; PEAT MOSS PROCESSING</b>	4.97
<b>1800</b>	<b>GREENHOUSES/MARKET GARDENS</b>	1.64
<b>1801</b>	<b>MUSHROOM PRODUCERS/BAIT FARMS</b>	2.90
<b>Total</b>		2.91



# Agriculture Safety Exposures Profile

## Lost Time Claims by Accident Year

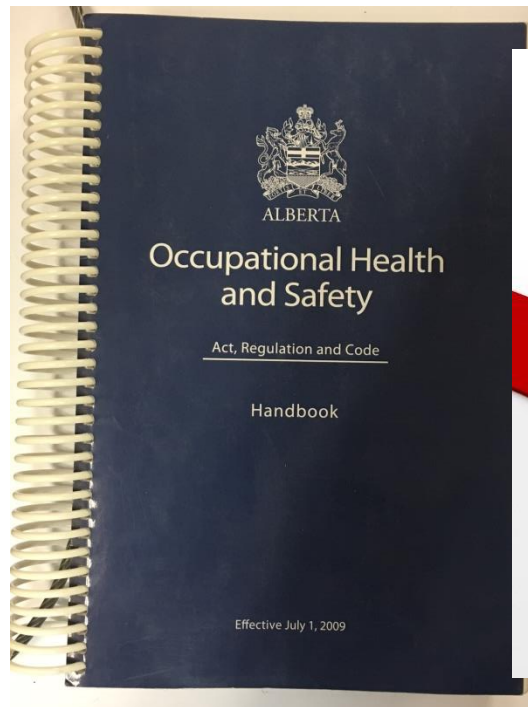


A cowboy wearing a light-colored cowboy hat and a blue long-sleeved shirt is riding a dark brown horse through a field of tall, golden-brown grass. He is herding a large group of cattle, which are mostly dark brown with some white faces. The scene is set in a rural, open landscape under bright sunlight.

# Moving Forward on the Bill 6 Technical Working Group (TWG) Consultation Process

**THE AGCOALITION**

# Occupational Health and Safety Code



## OH&S Code Elements

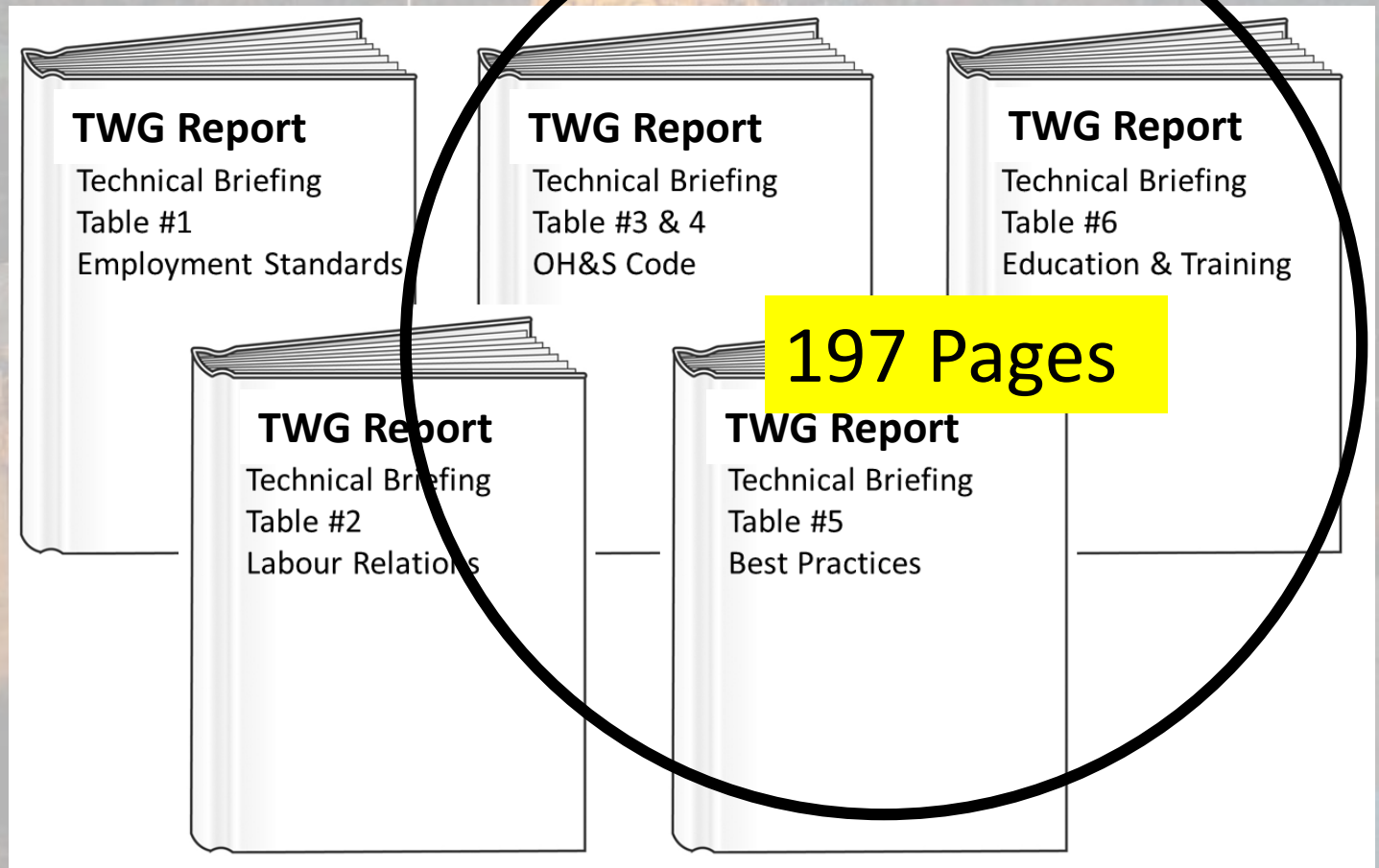
Definitions and General Application  
Hazard Assessment, Elimination and Control\*  
Specifications and Certifications  
Chemical Hazards, Biological Hazards and other Harmful Substances\*  
Confined Spaces\*  
Cranes, Hoists and Lifting Devices  
Emergency Preparedness and Response\*  
Entrances, Walkways, Stairways and Ladders  
Fall Protection\*  
Fire and Explosion Hazards\*  
First Aid\*  
General Safety Precautions  
Joint Work Site Health and Safety  
Lifting and Handling Loads\*  
Managing Control of Hazardous Energy  
Noise Exposure  
Overhead Power Lines  
Personal Protective Equipment\*  
Powered Mobile Equipment  
Radiation Exposure  
Rigging  
Safeguards  
Scaffolds and Temporary Work Platforms  
Toilets and Washing Facilities  
Tools, Equipment and Machinery  
Ventilation Systems  
Violence\*  
Working Alone\*  
Workplace Hazardous Materials Information System (WHMIS)\*  
Demolition  
Diving Operations  
Excavating and Tunneling  
Explosives  
Forestry  
Health Care and Industries with Biological Hazards  
Mining  
Oil and Gas Wells  
Residential Roofing  
Tree Care Operations  
Utility Workers - Electrical  
Work Requiring Rope Access

Part 1  
Part 2  
Part 3  
Part 4  
Part 5  
Part 6  
Part 7  
Part 8  
Part 9  
Part 10  
Part 11  
Part 12  
Part 13  
Part 14  
Part 15  
Part 16  
Part 17  
Part 18  
Part 19  
Part 20  
Part 21  
Part 22  
Part 23  
Part 24  
Part 25  
Part 26  
Part 27  
Part 28  
Part 29  
Part 30  
Part 31  
Part 32  
Part 33  
Part 34  
Part 35  
Part 36  
Part 37  
Part 38  
Part 39  
Part 40  
Part 41

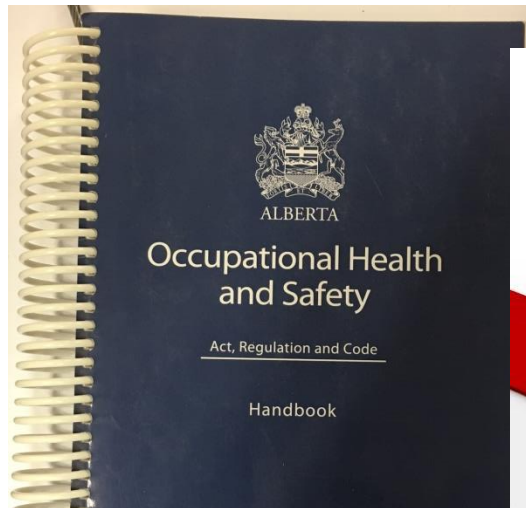
568 Pages

## OH&S Code Elements





# Occupational Health and Safety Code



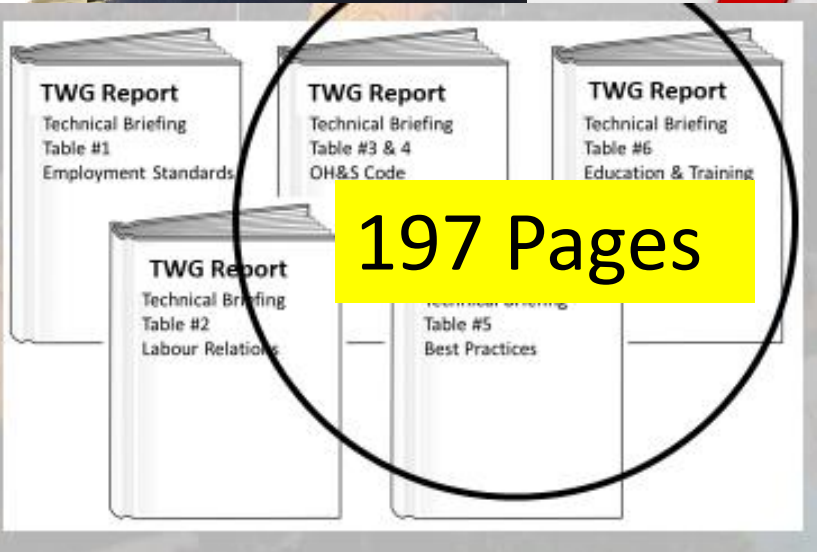
## OH&S Code Elements

Definitions and General Application  
Hazard Assessment, Elimination and Control\*  
Specifications and Certifications  
Chemical Hazards, Biological Hazards and other Harmful Substances\*  
Confined Spaces\*  
Cranes, Hoists and Lifting Devices  
Emergency Preparedness and Response\*  
Entrances, Walkways, Stairways and Ladders  
Fall Protection\*  
Fire and Explosion Hazards\*  
First Aid\*  
General Safety Precautions  
Joint Work Site Health and Safety  
Lifting and Handling Loads\*  
Managing Control of Hazardous Energy  
Noise Exposure  
Overhead Power Lines  
Personal Protective Equipment\*  
Powered Mobile Equipment  
Radiation Exposure  
Rigging  
Safeguards  
Scaffolds and Temporary Work Platforms  
Toilets and Washing Facilities  
Tools, Equipment and Machinery  
Ventilation Systems  
Violence\*  
Working Alone\*  
Workplace Hazardous Materials Information System (WHMIS)\*  
Demolition  
Diving Operations  
Excavating and Tunneling  
Explosives  
Forestry  
Health Care and Industries with Biological Hazards  
Mining  
Oil and Gas Wells  
Residential Roofing  
Tree Care Operations  
Utility Workers - Electrical  
Work Requiring Rope Access

Part 1  
Part 2  
Part 3  
Part 4  
Part 5  
Part 6  
Part 7  
Part 8  
Part 9  
Part 10  
Part 11  
Part 12  
Part 13  
Part 14  
Part 15  
Part 16  
Part 17  
Part 18  
Part 19  
Part 20  
Part 21  
Part 22  
Part 23  
Part 24  
Part 25  
Part 26  
Part 27  
Part 28  
Part 29  
Part 30  
Part 31  
Part 32  
Part 33  
Part 34  
Part 35  
Part 36  
Part 37  
Part 38  
Part 39  
Part 40  
Part 41

568 Pages

197 Pages





# TWG Recommendations as Reported

3-12

protective equipment is required, the employer is to ensure it.

3-12

Legacy equipment is exempt.

Part 19 – Powered Mobile Equipment

The following sections apply:

Part 19 – Powered Mobile Equipment

The TWG recommended exempting pile driving equipment and practices

4-10

Tank trucks containing flammable, combustible or explosive materials are bonded and grounded while loading lines are connected, transferring contents and disconnected.

applies with the following exception: Operator must ensure that a tank truck containing flammable, combustible or explosive materials is bonded and grounded.

Safety can be achieved by bonding or grounding as opposed to both.

19 Pages.....142 Recommendations



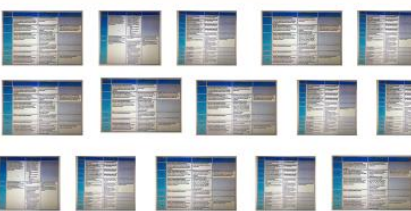
# GOA Analysis of TWG Recommendations

TWG Recommendation		Jurisdictional Alignment with Recommended Option	
Part 12 – General Safety Precautions			
Applies.			
Part 13 – Personal Protective Equipment			
Applies, apart from separate TWG recommendation for tagging requirements in			
Part 23 – Scaffolds and Temporary Work Platforms			
Applies, apart from separate TWG recommendation for tagging requirements in			
Part 24 – Confined Spaces			
Applies, apart from separate TWG recommendation for tagging requirements in			
Part 25 – Lifting Operations			
Applies, apart from separate TWG recommendation for tagging requirements in			
Part 26 – Fall Protection			
Applies, apart from separate TWG recommendation for tagging requirements in			
Part 27 – Excavation and Shoring			
Applies, apart from separate TWG recommendation for tagging requirements in			
Part 28 – Hot Work			
Applies, apart from separate TWG recommendation for tagging requirements in			
Part 29 – Radiation Protection			
Applies, apart from separate TWG recommendation for tagging requirements in			
Part 30 – Electrical Safety			
Applies, apart from separate TWG recommendation for tagging requirements in			
Part 31 – Fire Protection			
Applies, apart from separate TWG recommendation for tagging requirements in			
Part 32 – Transportation Safety			
Applies, apart from separate TWG recommendation for tagging requirements in			
Part 33 – Occupational Health and Safety			
Applies, apart from separate TWG recommendation for tagging requirements in			
Part 34 – Environmental Protection			
Applies, apart from separate TWG recommendation for tagging requirements in			
Part 35 – Safety Management Systems			
Applies, apart from separate TWG recommendation for tagging requirements in			
Part 36 – Safety Training			
Applies, apart from separate TWG recommendation for tagging requirements in			
Part 37 – Safety Audits			
Applies, apart from separate TWG recommendation for tagging requirements in			
Part 38 – Safety Committees			
Applies, apart from separate TWG recommendation for tagging requirements in			
Part 39 – Safety Representatives			
Applies, apart from separate TWG recommendation for tagging requirements in			
Part 40 – Safety Policies			
Applies, apart from separate TWG recommendation for tagging requirements in			
Part 41 – Safety Procedures			
Applies, apart from separate TWG recommendation for tagging requirements in			
Part 42 – Safety Plans			
Applies, apart from separate TWG recommendation for tagging requirements in			
Part 43 – Safety Manuals			
Applies, apart from separate TWG recommendation for tagging requirements in			
Part 44 – Safety Records			
Applies, apart from separate TWG recommendation for tagging requirements in			
Part 45 – Safety Inspections			
Applies, apart from separate TWG recommendation for tagging requirements in			
Part 46 – Safety Investigations			
Applies, apart from separate TWG recommendation for tagging requirements in			
Part 47 – Safety Reporting			
Applies, apart from separate TWG recommendation for tagging requirements in			
Part 48 – Safety Communication			
Applies, apart from separate TWG recommendation for tagging requirements in			
Part 49 – Safety Consultation			
Applies, apart from separate TWG recommendation for tagging requirements in			
Part 50 – Safety Cooperation			
Applies, apart from separate TWG recommendation for tagging requirements in			
Part 51 – Safety Collaboration			
Applies, apart from separate TWG recommendation for tagging requirements in			
Part 52 – Safety Partnership			
Applies, apart from separate TWG recommendation for tagging requirements in			
Part 53 – Safety Alliance			
Applies, apart from separate TWG recommendation for tagging requirements in			
Part 54 – Safety Network			
Applies, apart from separate TWG recommendation for tagging requirements in			
Part 55 – Safety Community			
Applies, apart from separate TWG recommendation for tagging requirements in			
Part 56 – Safety Culture			
Applies, apart from separate TWG recommendation for tagging requirements in			
Part 57 – Safety Climate			
Applies, apart from separate TWG recommendation for tagging requirements in			
Part 58 – Safety Environment			
Applies, apart from separate TWG recommendation for tagging requirements in			
Part 59 – Safety System			
Applies, apart from separate TWG recommendation for tagging requirements in			
Part 60 – Safety Framework			
Applies, apart from separate TWG recommendation for tagging requirements in			
Part 61 – Safety Structure			
Applies, apart from separate TWG recommendation for tagging requirements in			
Part 62 – Safety Foundation			
Applies, apart from separate TWG recommendation for tagging requirements in			
Part 63 – Safety Pillars			
Applies, apart from separate TWG recommendation for tagging requirements in			
Part 64 – Safety Cornerstones			
Applies, apart from separate TWG recommendation for tagging requirements in			
Part 65 – Safety Bedrock			
Applies, apart from separate TWG recommendation for tagging requirements in			
Part 66 – Safety Base			
Applies, apart from separate TWG recommendation for tagging requirements in			
Part 67 – Safety Ground			
Applies, apart from separate TWG recommendation for tagging requirements in			
Part 68 – Safety Surface			
Applies, apart from separate TWG recommendation for tagging requirements in			
Part 69 – Safety Floor			
Applies, apart from separate TWG recommendation for tagging requirements in			
Part 70 – Safety Foundation			
Applies, apart from separate TWG recommendation for tagging requirements in			
Part 71 – Safety Base			
Applies, apart from separate TWG recommendation for tagging requirements in			
Part 72 – Safety Ground			
Applies, apart from separate TWG recommendation for tagging requirements in			
Part 73 – Safety Surface			
Applies, apart from separate TWG recommendation for tagging requirements in			
Part 74 – Safety Floor			
Applies, apart from separate TWG recommendation for tagging requirements in			
Part 75 – Safety Foundation			
Applies, apart from separate TWG recommendation for tagging requirements in			
Part 76 – Safety Base			
Applies, apart from separate TWG recommendation for tagging requirements in			
Part 77 – Safety Ground			
Applies, apart from separate TWG recommendation for tagging requirements in			
Part 78 – Safety Surface			
Applies, apart from separate TWG recommendation for tagging requirements in			
Part 79 – Safety Floor			
Applies, apart from separate TWG recommendation for tagging requirements in			
Part 80 – Safety Foundation			
Applies, apart from separate TWG recommendation for tagging requirements in			
Part 81 – Safety Base			
Applies, apart from separate TWG recommendation for tagging requirements in			
Part 82 – Safety Ground			
Applies, apart from separate TWG recommendation for tagging requirements in			
Part 83 – Safety Surface			
Applies, apart from separate TWG recommendation for tagging requirements in			
Part 84 – Safety Floor			
Applies, apart from separate TWG recommendation for tagging requirements in			
Part 85 – Safety Foundation			
Applies, apart from separate TWG recommendation for tagging requirements in			
Part 86 – Safety Base			
Applies, apart from separate TWG recommendation for tagging requirements in			
Part 87 – Safety Ground			
Applies, apart from separate TWG recommendation for tagging requirements in			
Part 88 – Safety Surface			
Applies, apart from separate TWG recommendation for tagging requirements in			
Part 89 – Safety Floor			
Applies, apart from separate TWG recommendation for tagging requirements in			
Part 90 – Safety Foundation			
Applies, apart from separate TWG recommendation for tagging requirements in			
Part 91 – Safety Base			
Applies, apart from separate TWG recommendation for tagging requirements in			
Part 92 – Safety Ground			
Applies, apart from separate TWG recommendation for tagging requirements in			
Part 93 – Safety Surface			
Applies, apart from separate TWG recommendation for tagging requirements in			
Part 94 – Safety Floor			
Applies, apart from separate TWG recommendation for tagging requirements in			
Part 95 – Safety Foundation			
Applies, apart from separate TWG recommendation for tagging requirements in			
Part 96 – Safety Base			
Applies, apart from separate TWG recommendation for tagging requirements in			
Part 97 – Safety Ground			
Applies, apart from separate TWG recommendation for tagging requirements in			
Part 98 – Safety Surface			
Applies, apart from separate TWG recommendation for tagging requirements in			
Part 99 – Safety Floor			
Applies, apart from separate TWG recommendation for tagging requirements in			
Part 100 – Safety Foundation			
Applies, apart from separate TWG recommendation for tagging requirements in			

# AgC Analysis of TWG Recommendations

[illegible]

## TWG Recommendations as Reported



19 Pages.....142 Recommendations

© 2006 The Authors  
Journal compilation © 2006 Blackwell Publishing Ltd

GOA Analysis of TWG Recommendations

28 Pages.....142 Recommendations

© 2006 The Authors  
Journal compilation © 2006 Blackwell Publishing Ltd

TWG Recommendation	Jurisdictional Alignment with Recommended Option					Current DHS Code
	BC	SK	MB	ON	QB	
Applies.						All workers are aware of the plan.
Part 10 – Fire and Explosion Hazards	▲	•	•	▼	•	Employers must ensure that flammable and combustible substances at the workplace have appropriate controls in place to ensure that workers are not harmed or equipment is damaged.
Applies.				▼	•	Examples of general access to exits, and p
Part 12 – General Safety Precautions	•	•	•	▼	•	
Applies.				▼	•	Examples of general access to exits, and p
Part 14 – Lifting and Handling Loads	•	•	•	▼	•	Employers are to pro hazardous
Applies.				▼	•	
Part 15 – Managing the Control of Hazardous Energy				▼	•	
Applies.				▼	•	
Part 16 – Noise Exposure	•	•	•	•	•	Noise is a recognized noise to prevent hear
Applies, apart from separate TWG recommendation 217 regarding noise control design in Attachment 4	•	•	•	•	•	
Part 17 – Overhead Power Lines	•	•	•	•	•	Employer must ensure
Applies.				▼	•	If a hazard assessment that the worker is tra
Part 18 – Personal Protective Equipment	▼	•	•	▼	•	
Applies.				▼	•	
Part 19 – Powered Mobile Equipment	•	•	•	▼	•	Powered mobile equi terrain and snow vehi
The following sections apply: 256 (except 256(3)), 258(1-2), 259, 260(1-4), 262, 265, 266, 268, 269, 270(3), 271, 274, 277, 279 (except 279(1) (c) and 279(2) (c)), 280-284, 290.1.						
Sections not mentioned are addressed in separate TWG recommendations in Attachment 3 and 4.						
Part 20 – Radiation Protection	•	•	•	▼	•	Employers are required to develop and implement safe work procedures for a radiation source.
Applies.				▼	•	
Part 22 – Safeguards	•	•	•	▼	•	Any machine part or process that may cause injury must be guarded.
Applies.				▼	•	
Part 23 – Scaffolds and Temporary Work Platforms	•	•	•	▼	•	Employers are to ensure that scaffolds to be used as working platforms comply with a Canadian Safety Standard (CSA).
Applies, apart from separate TWG recommendation for tagging requirements in						

**Part 19 – Powered Mobile Equipment**

The following sections apply:

**256 (except 256(3)), 258(1-2), 259, 260(1-4), 262, 265, 266, 268, 269, 270(3), 271, 274, 277, 279 (except 279(1) (c) and 279(2) (c)), 280-284, 290.1.**

Sections not mentioned are addressed in separate TWG recommendations in Attachment 3 and 4.

Confidential Advice for Cabinet – This information has not been endorsed by Cabinet

Last Updated: August 24, 2021

**Part 19 – Powered Mobile Equipment**

The following sections apply:

256 (except 256(3)), 258(1-2), 259, 260(1-4), 262, 265, 266, 268, 269, 270(3), 271, 274, 277, 279 (except 279(1) (c) and 279(2) (c)), 280-284, 290.1.

Sections not mentioned are addressed in separate TWG recommendations in Attachment 3 and 4.

\_\_\_\_\_



# AgC Analysis of TWG Recommendations

## Part 19 – Powered Mobile Equipment

The following sections apply:

**256 (except 256(3)), 258(1-2), 259, 260(1-4), 262, 265, 266, 268, 269, 270(3), 271, 274, 277, 279 (except 279(1) (c) and 279(2) (c)), 280-284, 290.1.**

Sections not mentioned are addressed in separate TWG recommendations in Attachment 3 and 4.

Part	OHS Code	Intent	Comments	P	C	Risk	Guideline Statement
Part 19 – Powered Mobile Equipment	<p><b>256(1)</b> A worker must not operate powered mobile equipment unless the worker (a) is trained to safely operate the equipment, (b) has demonstrated competency in operating the equipment to a competent worker designated by the employer, (c) is familiar with the equipment's operating instructions, and is authorized by the employer to operate the equipment.</p> <p><b>256(2)</b> Subsections (1)(a), (b) and (c) do not apply if a worker in training operates the equipment under the direct supervision of a competent worker designated by the employer.</p>	Farm equipment is powerful and has a real potential to do harm, if people are not trained to use it correctly and know what to look out for. Farm equipment is used regularly and this training is beneficial to the safety of those operating it and those working in the vicinity of powered equipment.	This standard is acceptable	H	H	H	<p>Employees must be trained to safely operate powered equipment.</p> <p>Once instructed in safe operation, training includes supervising and monitoring of equipment operation to ensure the employee can reliably carry out safe operating procedures while using the equipment productively.</p>



# AgC Analysis of TWG Recommendations

## Part 19 – Powered Mobile Equipment

The following sections apply:

256 (except 256(3)), 258(1-2), 259, 260(1-4), 262, 265, 266, 268, 269, 270(3), 271, 274, 277, 279 (except 279(1) (c) and 279(2) (c)), 280-284, 290.1.

Sections not mentioned are addressed in separate TWG recommendations in Attachment 3 and 4.

Part	OHS Code	Guideline Statement	C	Risk	Guideline Statement
Part 19 – Powered Mobile Equipment	<p>256(1) A worker must not operate powered mobile equipment unless the worker</p> <p>(a) is trained to safely operate the equipment,</p> <p>(b) has demonstrated competency in operating equipment to a competent worker designated by the employer,</p> <p>(c) is familiar with the equipment's operating instructions, and is authorized by the employer to operate the equipment.</p> <p>256(2) Subsections (1)(a) and (c) do not apply if a worker in training operates the equipment under the direct supervision of a competent worker designated by the employer.</p>	<p>Employees must be trained to safely operate powered equipment.</p> <p>Once instructed in safe operation, training includes supervising and monitoring of equipment operation to ensure the employee can reliably carry out safe operating procedures while using the equipment productively.</p>	H	H	<p>Employees must be trained to safely operate powered equipment.</p> <p>Once instructed in safe operation, training includes supervising and monitoring of equipment operation to ensure the employee can reliably carry out safe operating procedures while using the equipment productively.</p>



# AgC Analysis of TWG Recommendations

## Part 19 – Powered Mobile Equipment

The following sections apply:

256 (except 256(3)), 258(1-2), 259, 260(1-4), 262, 265, 266, 268, 269, 270(3), 271, 274, 277, 279 (except 279(1) (c) and 279(2) (c)), 280-284, 290.1.

Sections not mentioned are addressed in separate TWG recommendations in Attachment 3 and 4.

**265(1)** An employer must ensure that glazing used as part of the enclosure for a cab, canopy or rollover protective structure on powered mobile equipment is safety glass or another non-shattering material providing at least equivalent protection.

**265(2)** An employer must ensure that the glazing installed on or after July1, 2009 on an enclosure of powered mobile equipment is approved to ANSI Standard ANSI/SAE Z26.1 (1996), *Safety Glazing Material for Glazing Motor Vehicles and Motor Vehicle Equipment Operating on Land Highways — Safety Standard*.

Operator cab windows should be able to provide some protection from impact and shattering glass shards if the window fails due to impact or overload such as in an equipment upset or turnover.

Specifying an ANSI Z26.1 standard for existing equipment is not practical for farmers to assess nor is it likely that equipment windows in good repair will be replaced to meet this standard.

The phased introduction of this enclosure glass standard through the original equipment manufacturers (OEMs) for both new and replacement windows would practically achieve the intent through time.

L

M

L

New Equipment should be supplied to meet safety standards for glass in operator cabs/enclosures and replacement glass on current and legacy equipment should be supplied to meet this standard.



# AgC Analysis of TWG Recommendations

## Part 19 – Powered Mobile Equipment

The following sections apply:

256 (except 256(3)), 258(1-2), 259, 260(1-4), 262, 265, 266, 268, 269, 270(3), 271, 274, 277, 279 (except 279(1) (c) and 279(2) (c)), 280-284, 290.1.

Sections not mentioned are addressed in separate TWG recommendations in Attachment 3 and 4.

265(1) An employer must ensure that glazing used as part of the enclosure for a cab, canopy or rollover protective structure on powered mobile equipment is safety glass or another non-shattering material providing at least equivalent protection.

265(2) An employer must ensure that the glazing installed on or after July 1, 2009 on an enclosure of powered mobile equipment is approved to ANSI Standard ANSI/SAE Z26.1 (1996), *Safety Glazing Material for Glazing Motor Vehicles and Motor Vehicle Equipment Operating on Land Highways — Safety Standard*.

Operator cab windows should

Specifying an ANSI Z26.1 standard

L M L

New Equipment should be supplied to meet safety standards for glass in operator cabs/enclosures and replacement glass on current and legacy equipment should be supplied to meet this standard.

New Equipment should be supplied to meet safety standards for glass in operator cabs/enclosures and replacement glass on current and legacy equipment should be supplied to meet this standard.



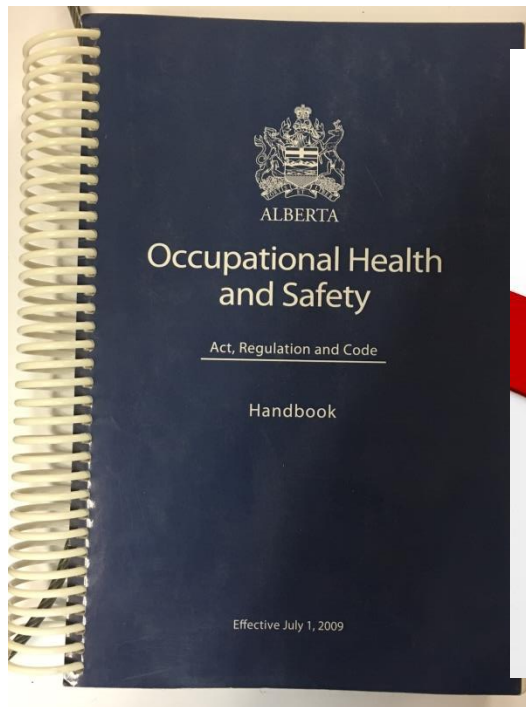
# EMESRT

Earth Moving Equipment Safety Round Table

*“Join us on the journey to improve design one step at a time”*







**GUIDELINES**

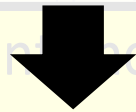
Meeting  
Intent





# AgC Analysis of TWG Recommendations

Government Support for AgCoalition  
Process to Convert TWG Recommendations  
Into Guidelines



AgCoalition Analysis Team Developing  
Guidelines that Make Sense at the  
Farm and Ranch Level

# Industry Leadership Advisory Committee (ILAC)

Producer Representatives from  
Coalition Provide Feedback

Grande  
Prairie

March 12, 2018

Red  
Deer

March 19, 2018

Lethbridge

March 23, 2018

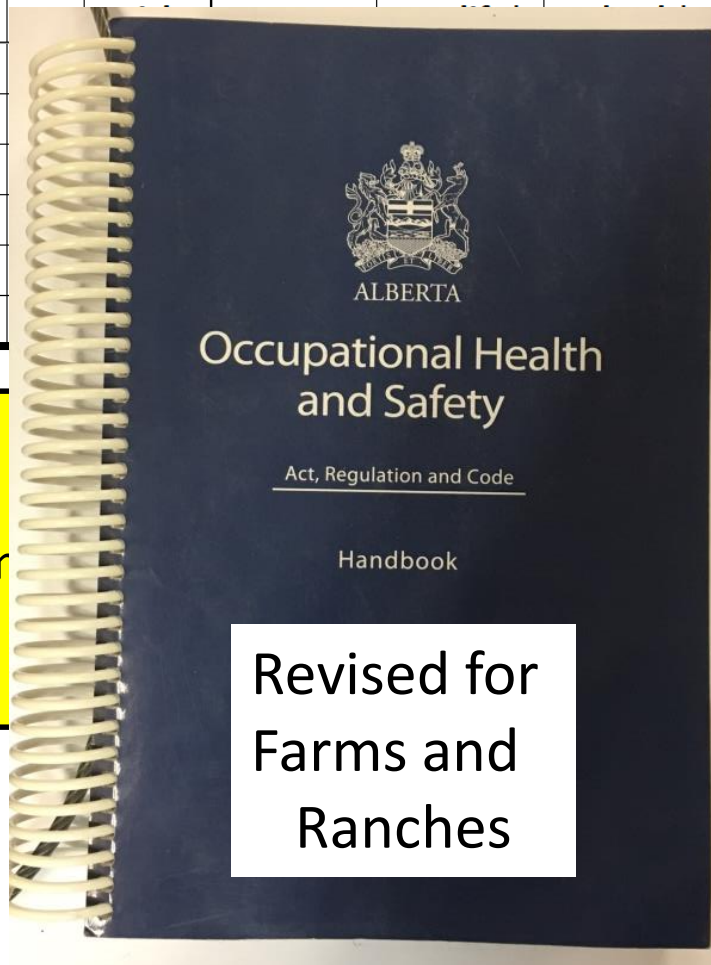


# The ILAC Scoresheet – Getting Feedback

OH&S Code		Risk Calculation		Feedback on Guideline ("X") * Provide Comment		Pace to Implement ("X")		
Part	Section	P				1 Year	2-3 Year	Beyond
19	256	H				X		
19	258	H				X		
19	259	L					X	
19	260	H						
19	262	H						
19	265(1)-265(3)	L						

19-259


Producer Comm  
Suggestions for



Revised for  
Farms and  
Ranches

Comments and  
ns for Improvement



A cowboy wearing a blue shirt, jeans, and a cowboy hat is riding a brown horse through a field of tall, golden grass. He is herding a large group of cattle, including brown and black cows with white faces. The scene is set in a rural, open landscape.

# Continuation with Government Consultations

**THE AGCOALITION**

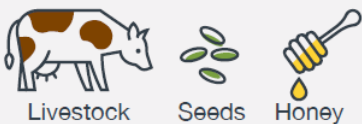
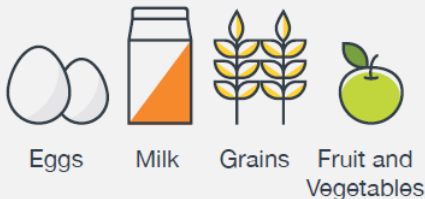
# Employment Standards Reviews

## How Alberta's Employment Standards apply to farms and ranches



### What is considered a farming and ranching operation?

Operations that are involved in the production of:



The following are **not considered** farms or ranches and all minimum requirements under Employment Standards apply:



- Greenhouses
- Nurseries
- Mushroom farms
- Sod farms

### Who do Employment Standards apply to?

Minimum standards for employment apply to farms and ranches with **waged, non-family employees**, including seasonal and year-round employees.

These rules don't apply to friends and neighbours helping each other as they have done for generations.

### Who is classified as a family member?

Employment Standards rules don't apply to owners and their family members. 'Owner' means a shareholder, sole proprietor or partner.

#### Family members of the above include:

Spouse (married), common-law partner, or adult-interdependent partner
Children, step-children, their spouse
Parent, step-parent, their spouse
Sibling, half-sibling, step-sibling, their spouse
Grandparent, step-grandparent, their spouse
Aunt, uncle, step-aunt, step-uncle, their spouse
Niece, nephew, their spouse
First cousin, their spouse

### What are the rules around employing youth?



Youth involved in household chores or activities, such as 4-H or branding parties, are not considered employees. Employment Standards do not apply.

- **12 year olds and under:**  
can't be employed on farms and ranches.
- **13 – 15 year olds:**  
can only be employed in a job considered 'light work', or other non-hazardous work authorized by a permit (requiring parental consent) from the Director of Employment Standards.
- **16 – 17 year olds:**  
can't be employed in hazardous work unless authorized by a permit from the Director of Employment Standards.

Find more information on light work and hazardous work at:  
[alberta.ca/ESchanges](http://alberta.ca/ESchanges)



### How long is a regular work day?

There's no limitation to the hours of work for farm and ranch operations.



### Do employees get breaks at work?

Providing breaks during daily shifts isn't required, but employers are encouraged to provide appropriate rest to help workers stay alert and safe.



### Do employees get days of rest?

They **must be** provided with 4 days of rest in each 28 consecutive day period worked.



# Youth Employment Consultations



*A permitting process  
is not in any way  
practical on a farm or  
ranch*

January 1, 2018

## Industry Feedback on Development of Labour's Youth Employment

### Introduction

In October 2017, the Government of Alberta invited participation from a broad range of stakeholders, including representatives from some of the agricultural community. The results of these workshops have been summarized in a number of consultation reports. One of the key findings from these consultations is that the agricultural community does not support the development of task lists for youth workers in Alberta.

*The agricultural community does not  
support the development of task lists  
for youth workers in Alberta*









November 13, 2017


January 24, 2018

March 28/29, 2018

June 28 AGM, 2018

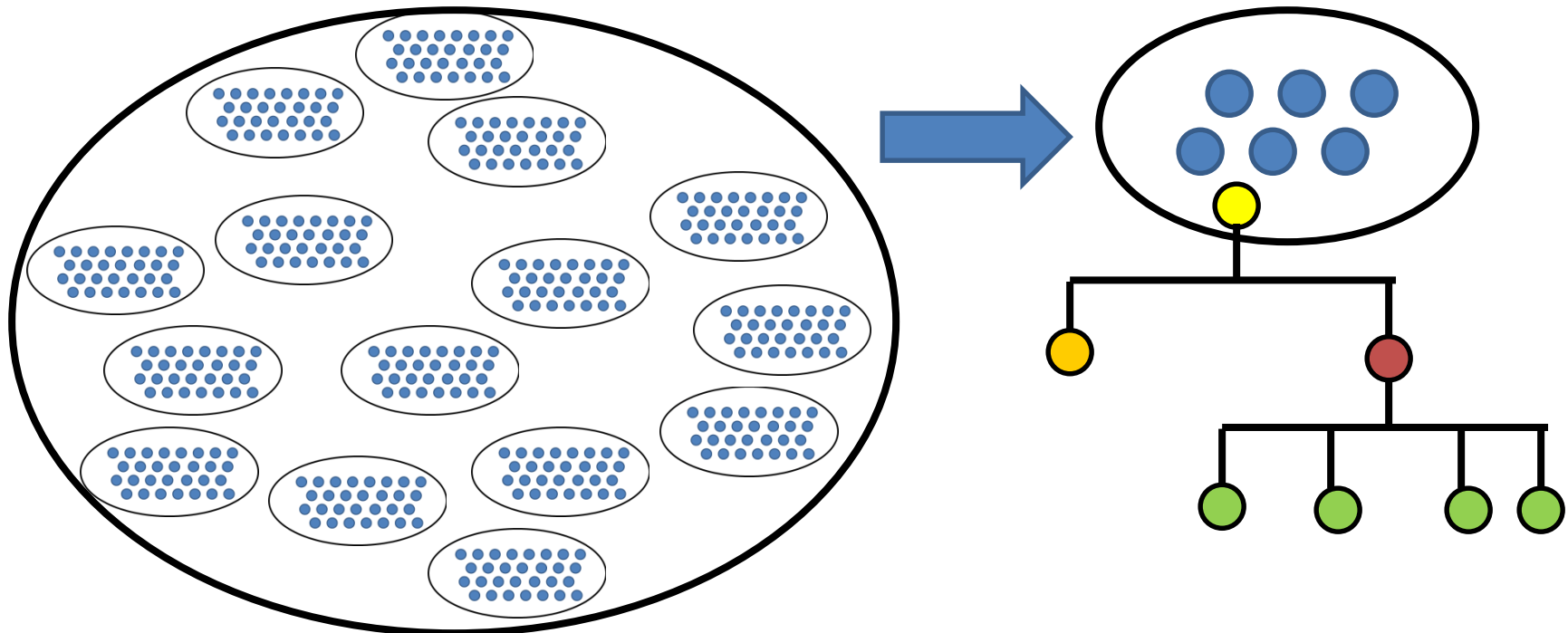
August 7, 2018

# AgSafe Alberta Society Board Meetings





- Board Members
- Exec Director
- Support
- Coordinator
- Advisors







## Risk Assessment Package (contract awarded)

1. Risk assessment tool to assess the severity and probability of hazards associated with farm job activities

## Quick-Start Guide Package (contract awarded)

1. Quick-start, step-by-step guide to building a farm safety program.
2. Two-hour on-farm training course instructing how to build a basic, practical farm safety program and how to use the toolbox of resources in the quick-start guide.
3. Multi-series computer based training module to instruct the student on developing a basic, practical farm safety program.
4. 10-15 minute computer based training module: general farm safety introduction and orientation for farm employee/family members.





## AgSafe Alberta Society (ASAS) Bylaws

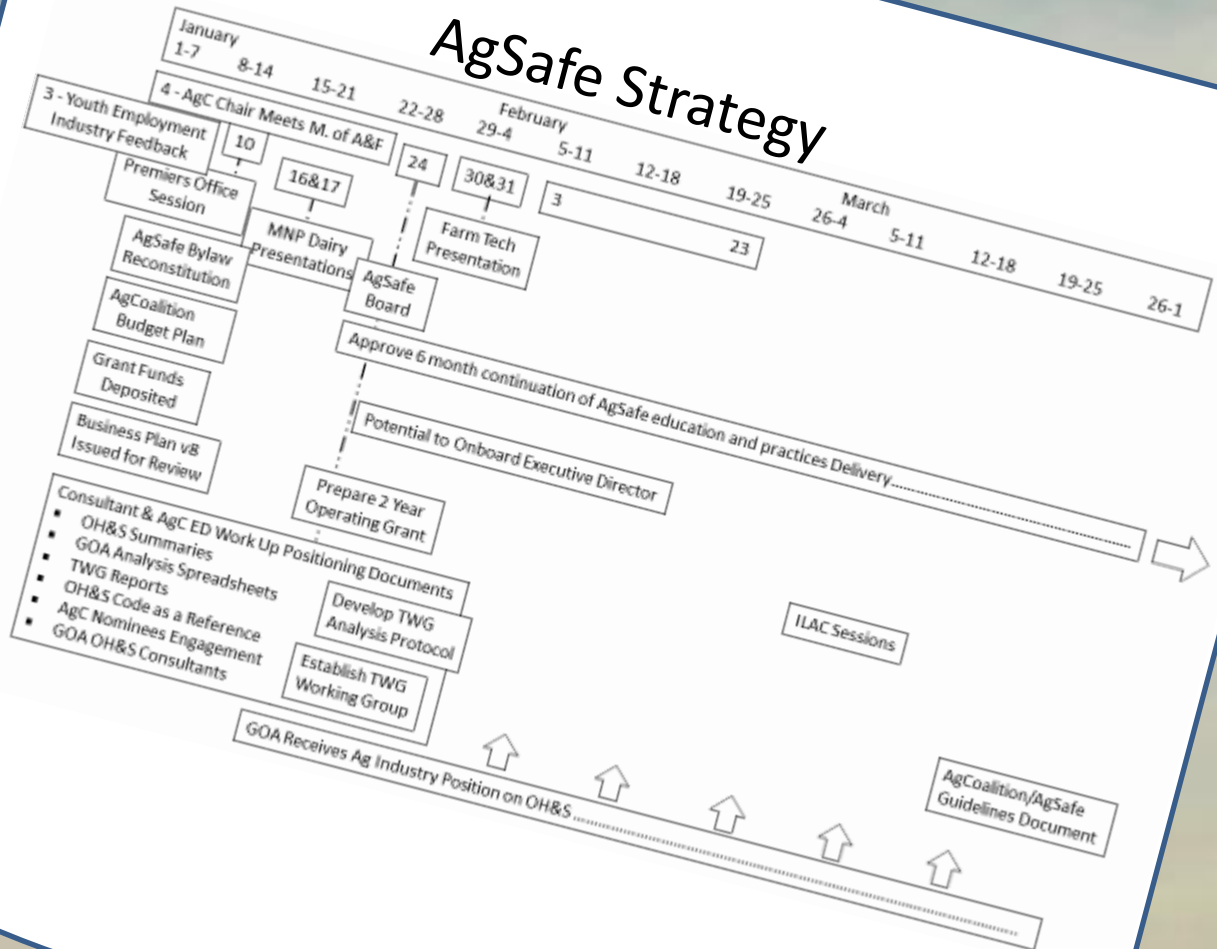
### 1. General

The members of the Ag Safe Alberta Society (hereinafter referred to as Ag Safe) shall be the Applicants for incorporation of the Association and such other persons as are admitted as members pursuant to the provisions of these bylaws and, in either case, have not ceased to be members.

### 2. Membership



## AgSafe Strategy







# AgSafe Alberta Society (ASAS) Business Plan

## Table of Contents

1. Introduction
2. Governance
3. ASAS Funding
4. Growth Plan
5. Communications strategy
6. Operations
7. Human resources
8. Operational budget





Industry Leadership



Guidelines Meeting Intent



Meeting on Guideline Application  
Using a Standard Approach







Take Command of the Measures



Incident Reporting



Measuring Improvement





Build on  
Good Work

Use a Paced  
Approach



**Farm Safety Producer Package:  
Hazard Identification and Controls**



**Address the Higher Risks to Start**

**CATTLE FEEDERS' ASSOCIATION**

**Health and Safety  
Program**

**Health and  
Safety Manual**



**Dairy Farm**



Context is Everything



Guidelines a Fit for the Operation

Make Sense at the Farm and Ranch Level





